

## SEARCHERS BOARD OFFICERS

- President: Kim Strange
- 1st VP: Sharon Burson
- 2nd VP: Andrew Bloxom
- Director: Doug Flaugh
- Secretary: Jamie Cassidy-Curtis
- Treasurer: Sue Gevedon
- Federation Delegate: Nancy Bird
- Committee Chairpersons
- Editor: Linda Horn
- Historian:
- Hospitality: Lorri Renck
- Library: Inez Flaugh
- Sunshine:
- Veteran Liaison :
- Website: Steve Duncan
- Shop Chairman: Jim Peterson—Temp.
- Show Chair: Margaret Hogarth

## IN THIS ISSUE

Field Trips	5
Club Meetings	2
Upcoming CFM Shows	8

## POINTS OF INTEREST

### FIELD TRIPS

### GENERAL MEETING

### SPEAKERS

# The Rock Slab News

VOLUME 58, ISSUE 8

AUGUST 2021



## The President's Message

Hello Searchers,

The turnout at our July in person meeting was outstanding and exceeded my expectations – we had 40 people in attendance. About 15 people participated in “show and tell” and shared some of their lapidary handiwork and/or recent finds with those in attendance. It seemed like everyone had a great time – “thank you” to everyone who attended and especially to those who shared. Our August meeting should be even more fun – the program for August will be a silent auction of some recent donations to the club. I have been told there are some really great items that will be part of the auction. Come one, come all and see what treasures you find.

As I mentioned during our July meeting, the Searchers club has a new Facebook Group. You can access and join the group by going to; <https://www.facebook.com/groups/564049648337138>. The Board will use this group to share club news and make announcements about upcoming club events – this Facebook Group will be one more method that we use to stay in touch with our members and friends of the club.

As a reminder, our club's annual picnic will be held on Saturday August 7 at Yorba Regional Park from 11a to 3p. Please mark this date on your calendar. A sign-up sheet was available at the July meeting, if you missed it, send Sharon Burson an email or call her to participate in the fun. To allow everyone to enjoy the picnic, our lapidary shop will be closed on Saturday, August 7.

As I announced several weeks ago, Adrian Callard has stepped down as our Shop Chairperson. Jimmy Peterson has graciously agreed to step in temporarily to help coordinate the shop activities but the club really needs a group of 3 or 4 individuals who can rotate the responsibility of coordinating our shop. If we aren't able to get a group to share the shop responsibilities, it will affect the days and hours of operation of the shop in the near future. Please contact Jimmy Peterson or myself if you can help out in this way. For now, shop hours are Thursday from 5:30p to 10p and Saturday from 2:30p to 7p. Check the calendar on the club's website for any last-minute changes to shop hours. As a reminder and as announced in the June Slab, fees to use the lapidary shop will increase to \$10 per day as of August 1.

One last thought, in order for our club to continue to do well in the future, it will take all members to give some of their time and talent to support the club. Officer elections for 2022 will be held at our November general meeting and the newly elected officers will take over leadership of the club immediately after the election. Please consider supporting the club by running for a board seat or filling a director role next year. Contact anyone on our Nominating Committee (Margaret Hogarth, Robert Burson or Jimmy Peterson) to learn more about participating in the club's leadership next year.

That's all for now Searchers. Stay safe and I'll see you soon.



## Searchers Club Meetings and Presenters

Board Meeting- August 3rd

Member Meeting- August 10th in the Anaheim Community Center

### Searchers board meeting – July 6th

The Searchers board met at the now-reopened Anaheim Downtown Center on June 6 at 6:30 pm.

Items discussed included:

Karen Kramer attended the board meeting to discuss possible ways Searchers and the SCC Gemology Alumni Association could work together. More information will be available later.

Social media updates: we have a new Searchers Facebook page, The Searchers Gem and Mineral Society, Inc.

We're also working to modernize our website.

Online payments (such as for dues): the new Searchers Zelle account can successfully receive money, but we haven't yet successfully sent money from the account. Both ways should be possible if the account is working correctly. We're working with our bank to figure out what the problem is and to fix it.

Plans for the Searchers annual picnic in August are going well. We'll provide signup sheets at the July general meeting, our first in-person meeting since March 2020. At next month's board meeting, we'll see if anything else is needed for the picnic.

### Searchers general meeting – July 13th

The Searchers meeting was held at the Anaheim Downtown Center on July 13 at 7:00 pm. Announcements included:

Our annual picnic will be on Saturday, August 7 from 11 am until 3 pm at Yorba Regional Park. It's the usual potluck, so signup sheets are at the back of the meeting room. For those who've never been there, Yorba Regional Park is a large, beautiful park with a lake where you can rent paddleboats.

More than a dozen new members joined Searchers since our last in-person meeting. Many of them attended this meeting, where they introduced themselves, and were able to choose a new member gift (mineral samples).

We need volunteers, ideally 3 or 4, to help run the workshop. Adrian Callard has stepped down as Shop Chair for health reasons. Jimmy Peterson is the interim Shop Chair, but he plans to go on some of the weekend field trips, so he can't attend every workshop.

We're also looking for a volunteer to manage the new Searchers Facebook page.

The next Searchers election is in November. Please consider running for a board position; you can contact the Nominating Committee (Margaret Hogarth, Jimmy Peterson, and Robert Burson) for more information.

Steve Duncan announced that several Searchers members are tentatively planning a long-range field trip in late August, like the one held several years ago. The field trip would take about 10 days, visiting multiple sites including Northern California for obsidian. Searchers members can go on the entire field trip, or they can join the group for just a site or two. Contact Steve for more information, or if you'd like to participate in all or part of the field trip. More information will be available later.

Charles Walker is collecting slab donations for the VA lapidary workshop.

Next year's show plans are April 30<sup>th</sup> & May 1<sup>st</sup> 2022 at the Brookhurst Community Center, with setup on Friday April 29<sup>th</sup>. (We usually hold the show on the first full weekend in May, but we moved it up a week to avoid competing with customers' weekend plans for celebrating Mother's Day and/or Cinco de Mayo.)

Margaret brought examples of prizes you can donate for next year's show. All types of prizes, inexpensive and more valuable, are needed for children and adults. The example prizes included stretchy-cord rock bead bracelets, dinosaur cards, and one of Margaret's beautiful wind chimes with hanging rock slabs.

The program tonight was a members' Show and Tell. Members brought a wide variety of items, including fossils, fluorescent rocks, rough from Texas, wire-wrapped cabs, spheres, and belt buckles.

# Searcher News

## August Meeting 8-10-2021

Speaker: None

Topic: Silent Auction / 1st half of Keswick collection

Description: Jan Keswick donated her father's, Mr. Keswick rock collection to the Searchers in June 2020. There is a wide variety of material: nodules, jaspers, petrified wood, agates, onyx with lots of hidden gems. Half of the collection will be on display for silent auction in our August General meeting. The second half of the Keswick collection will be up for bid in our November General Meeting which will also include our annual elections.



## Archived Searcher Presentations and Materials

Searchers, we have added new material to the archive of Searcher presentations at <https://www.searchersrocks.org/meeting-archive>

Sphere Making with Jim Peterson (Interview)

Sphere Making with Jim Peterson Presentation file

Sphere Making with Jim Peterson Zoom recording

Check it out!



## Searchers New Logo Wear Website

Here is the link:

<https://fineartamerica.com/featured/searchers-logo-kim-strange.html?product=regular-tshirt>

Once the page loads, the default is a men's t-shirt but the drop down menus on the right side allow the selection of different sizes, colors and types of apparel. In addition, scrolling down on the page then shows a variety of other logo items - from cell phone cases to tote bags to notebooks and everything in between. Let's see if we can work up some sort of standing notification in the slab each month to try to generate some interest. The club earns a small commission on each logo item sold so this is a fund raiser for the club. Let me know if you have any questions.

## Saw Oil Available

The club supplies saw oil at a good price. It is located at Jim Peterson's home. Bring your own 5 gallon container. The cost is \$60 for 5 gallons. Call 714 904-8573 and make a check payable to "Searchers"

## Upcoming Field Trips

Below you will find information about a long range trip next month. If you are interested in the trip, please let me know by email at [mrstevduncan2@gmail.com](mailto:mrstevduncan2@gmail.com) or by text or phone at 714 724 7102. Because this is a long trip some people may only be able to participate in a piece of it, this is of course fine. Just let me know your plans. Among other things I need to decide if we have enough people for the group site for the last 2 nights, or if we need to switch to individual campsites. If you have any questions feel free to reach out to me. We will be unable to have campfires except possibly at the last camp due to fire restrictions. And obviously forest fires or other acts of God could require us to change plans or cancel. It should be a good trip, join us if you can.



Regards, Steve

### Obsidian and Jaspers/Agates Long Range Trip

**August 20-29, 2001**

**Trip leader Steve Duncan      714 724 7102**

We will collect obsidian for 3 days at Lassen/Davis Creek Sat Aug 21, Sun Aug 22 & Monday Aug 23. We will be at the Lassen Creek campground on the evening of Friday August 20, and stay there through Monday night. Collecting trips will start at 0800.

Here are forest service directions to the free campground:

From Alturas go north on US Hwy 395 approximately 20 miles to Davis Creek. Turn east on County Road 11 and continue approximately 9 miles to County Road 30/Modoc Backcountry Discovery Trail and turn left/north. Continue north approximately 15 miles to the campground on the right.

Alternately, continue past Davis Creek to Co. Rd. 47, turn right (east) and follow the few signs to the campground.

Here is a link to the campsite page

<https://www.fs.usda.gov/recarea/modoc/recarea/?recid=71294>

You must get your (free) obsidian collecting permits in Alturas on Friday during the day. Assuming you are collecting all 3 days get 3 permits for Aug 21, 22, and 23

Modoc National Forest Headquarters at 225 W. 8th St. in Alturas, Calif. Monday-Friday 8 a.m.-12 p.m. and 1 p.m.-4 p.m. Valid picture identification and vehicle information are required for each individual seeking permits. Collection permits for weekends and holidays must be obtained on weekdays.

Here is a link to the Forest Service permit page:

<https://www.fs.usda.gov/main/modoc/passes-permits/forestproducts>

Here is a link to info about the collecting sites:

**For field trip  
information  
contact:  
Andrew  
Bloxm Field  
Trips,  
Searchers  
Gem and  
Mineral  
Society,  
andrew.bloxom@gmail.com**

Tuesday Aug 24 we will move to a campsite in Oregon, Cedar Bloom. This is a fee site, \$60 per couple per night. The camp has a mile of river front, a swimming hole etc. We can prowl around the river here looking for agates the day we arrive

Link to the campsite:

<https://www.hipcamp.com/en-US/oregon/cedar-bloom/cedar-bloom-open-camping>

Wed Aug 25 we will collect on the Illinois river (Site 90 Gem trails of Oregon) for agate and jasper in river gravels. Wed night we will stay at Cedar Bloom again.

Thursday morning Aug 26 we will move to Rivers Edge RV park back in California. This is a fee site, \$50 couple, we will stay there 1 night. The day we arrive we can look at collecting on the Eel River next to camp.

Link to River's Edge RV park: <http://www.riversedgepark.com/>

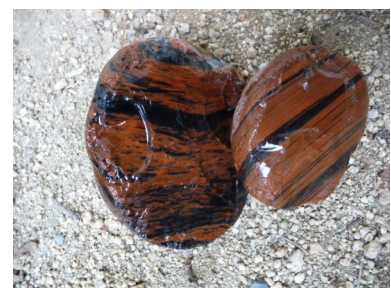
Friday Aug 27 we will collect on the Van Duzen river (Site 22 Gem trails Of Northern California) for red and green jasper and jade and serpentine in river gravels

Friday afternoon we will move to a group campsite near the beach at Westport RV Park & Campground, (\$230/night for 20 people), we will stay there for 2 nights. I believe that this is the only place where campfires may be permitted

Link to [westportbeachrvpark](#)

Sat Aug 28 is a non-rockhounding day, shocking I know. For those that want, we will visit nearby Jug Handle State Natural Reserve and do a 5 mile hike on the Ecological Staircase trail: The [Jug Handle Ecological Staircase Trail](#), located within the Jug Handle State Natural Preserve, is a 2.5-mile trail that explores the intriguing and unique pygmy forest. The ecological staircase is a series of several marine terraces, each with its own geology, soils, and plant communities. Jug Handle received a "Natural National Landmark" designation because of the site's unique natural history.

Sunday Aug 29-Head home





## How to Read a Geologic Map

Geologic maps provide a valuable source of information for geologists, engineers, planners, the mineral and construction industries, county and local units of government, and land owners who may be concerned with mineral resources, water supply, construction siting, utility routing, waste disposal, and other issues.

Source: <https://wgnhs.wisc.edu/wisconsin-geology/bedrock-geology/read-geologic-map/>

What features are found on a geologic map?

1. Map: Geologic maps are idealized pictures of the distribution of earth materials at or near the ground surface.
2. Explanation: The description of map units defines each earth material (map unit) shown on the geologic map. Each map unit is defined by its own unique color, name-abbreviation, and text describing physical characteristics.
3. Scale: The map scale relates the size of geologic features shown on the map to the actual size of those features. A scale of 1:100,000 means that one unit (an inch, for example) is equal to 100,000 units in real life.
4. Symbols: This area shows diagrams, names, and descriptions of every symbol used on the map.
5. Correlation of map units: The correlation of map units shows the relative age of each type of earth material (map unit) shown on the map. This element may be absent from a geologic map when the units simply stack one on top of another, from oldest to youngest. In this case, the explanation does double duty, describing each unit and presenting it in the order of its relative age.

Source: <https://wgnhs.wisc.edu/wisconsin-geology/bedrock-geology/read-geologic-map/map-features/>

Interpreting a map



In the map shown above, different colored map units show the distribution of various rock types at the earth's surface.

al	qd
ghg	fv
gr	iv
kqm	mv

## Contacts and faults

Contacts between different map units show where one kind of rock or other earth material passes into another. Sometimes the transition is clear (often depicted by a solid line) and sometimes it's uncertain or approximate (a dashed line).

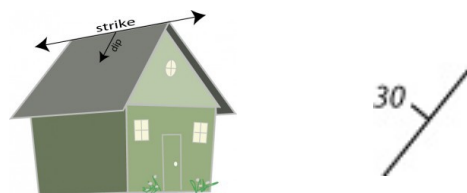
Faults are places where the earth's crust has moved. On a geologic map, fault lines show where one unit has slid, been pushed up, or dropped down relative to the neighboring map unit.



In this example, a very deep part of a fault is exposed at the earth's surface. In this case, there is a zone of deformed rocks rather than a single fault. This deformation zone is mapped as a shear zone, as indicated by the squiggly lines.

## Strike and dip (orientation of rocks and faults)

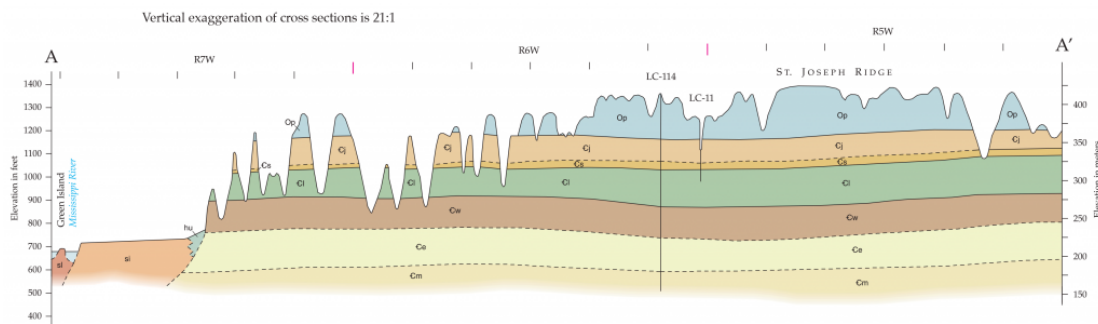
Strike and dip example using a house



Another way of remembering strike and dip is to think of the roof of a house. "Strike" is the direction the ridge of the house points, while "dip" measures the slope of the roof.

Strike and dip symbols show the orientation of rocks and fault planes. The strike, the long line, shows the direction the rocks point. The dip, designated by the short line and number, indicates the direction and angle that the rocks are tilted (90 degrees would mean that the rocks are completely vertical).

## Cross section



A cross section represents a vertical slice of the earth's crust showing the subsurface rock layers in much the same way that a slice of cake shows the layers of cake and frosting. Cross sections help the map user understand the arrangement of rocks beneath the earth's surface.

Source: <https://wgnhs.wisc.edu/wisconsin-geology/bedrock-geology/read-geologic-map/interpreting-a-map/>

## Searchers Information

### Nominating Committee News

The Searchers Board has spent the last two years strengthening the club, clarifying procedures and expectations, and making sure that Searchers can face the future in a robust, professional way. They have done an amazing job, however, several members of our current board would like to serve Searchers in different ways in 2022. We have three openings and suggest a team approach to the Workshop Coordinator role. Brief job duties follow. For a complete list of job duties, please see the Searchers website at <https://www.searchersrocks.org/club-documents> > Searchers Standing Rules (contains Job Duties).

Brief Job Duties:

President:

- In January at the Board meeting, reviews the Searchers By-Laws, Standing Rules, and Job Duties with incoming board members. Appoints a committee to review the By-Laws, Standing Rules, and Job Duties as deemed necessary by the President.
- Appoints the committee chairpersons as necessary, and provides them with job descriptions.
- By November, sets up the working schedule for the following year and makes the meeting room reservations.
- Presents CFMS pins and bars to outgoing board members at the annual installation.

First Vice-President:

- As the Program Chairperson, plans programs/speakers for monthly meetings, February through January.
- Will be responsible for the installation of new officers.
- Conducts or oversees activities of the Social Director as required.

Second Vice-President:

- As the Field Trip Chairperson, is responsible for planning and coordinating all field trips and associated events during the year, February through January.
- Shall notify all participants of field trip rules and regulations.

Workshop Coordinator:

- Working with a team of approximately four people, responsible for maintaining a sign-up sheet for shop sessions and collecting fees. Supervises the shop to make sure safety measures are observed and equipment is used sustainably.
- Submits workshop and class fees to the Treasurer.

If we have a team of four people, you would have to supervise only 2-3 workshops per month.

Candidates will be well supported by past board members and long-term Searchers. Not sure you can be a vice president by yourself? Get a partner! This is a great opportunity to grow a deeper relationship with the club, make life-long friends, and learn more about rocks. If interested, please contact the Nominating Committee: Robert Burson, Jim Peterson, and Margaret Hogarth.



## Happy Days - The Shop is now open.

Finally after over a year, the Searchers workshop at the Anaheim Community Center is open for business. This is June 17th, Thursday night. Come have some fun and socialize again.



Shop Hours Thursday from 5:30pm to 10pm

Saturday from 2:30pm to 7pm **It will be closed the day of the Picnic.**

**ITS BACK**

## Searcher's Potluck Picnic 2021

**Date and Time: Saturday, August 7th from 11am to 3pm**

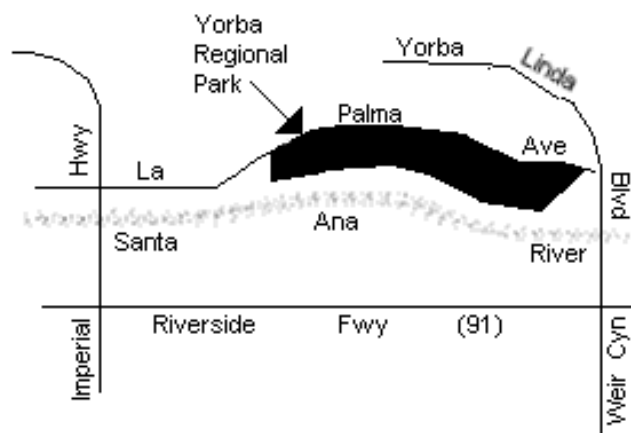
Location: Yorba Regional Park, 7600 E. La Palma Ave, Anaheim Hills, CA 92807

Area: Site #6 by Parking Lot #2

**Parking:** \$5 fee (no free re-entry)



**Note:** Sign up sheets will be distributed in the July General Meeting. Please help to make this a fun and enjoyable time by signing up to bring food and supplies to the picnic.



For a more complete listing of shows go to web-site: [www.cfmsinc.org](http://www.cfmsinc.org)

## Upcoming 2021 CFMS Gem Shows

**Still check to make sure a show has not been canceled**

### 2021 Shows

#### August 14-15, 2021 – Arcadia, CA

Pasadena Lapidary Society  
"Inspiration Unearthed", 62nd Annual Tournament of Gems  
Arcadia Masonic Center, 50 W. Duarte Rd., Arcadia  
Hours: 10-5 Daily  
Contact: Ellen Ferrell 1-727-512-0381  
Email: [ellenbf2007@aol.com](mailto:ellenbf2007@aol.com)  
Website: [pasadenalapidary.org](http://pasadenalapidary.org)

#### September 4-5, 2021 – Reno, NV

The Reno Gem & Mineral Society, Inc.  
Jackpot of Gems  
Reno Convention Center, 4390 S. Virginia St., Reno  
Saturday 10 AM-5 PM, Sunday 10 AM – 4 PM  
Contact Dan Ellis, [sailondan55@aol.com](mailto:sailondan55@aol.com)  
[www.renogms.org](http://www.renogms.org)

#### September 18-19, 2021 – Chico, CA

Feather River Lapidary and Mineral Society  
Silver Dollar Fairgrounds, 2357 Fair St., Chico, CA 95928  
Saturday 9 AM – 5 PM, Sunday 9 AM – 4 PM  
Contact: 1 530 586-7052; Website: <http://featherriverrocks.org>

#### October 9-10, 2021 – Los Altos, CA

Peninsula Gem and Geology Society  
One No. San Antonio Road, Los Altos, CA 94022  
Saturday and Sunday 10 AM – 5 PM  
Contact: 1 (408) 834-5384, [steve\\_job@sbglobal.net](mailto:steve_job@sbglobal.net)  
Website: <http://pggs.org>

#### October 10, 2021 – Fallbrook, CA

Fallbrook Gem and Mineral Society  
Fall Festival of Gems  
Location: Across the street from the Fallbrook Gem and Mineral Museum, 123 W. Alvarado St., Fallbrook, CA in the parking lot.

#### October 10th, 9 AM – 4 PM

Contact (760) 728-1130  
Email: [info@fgms.org](mailto:info@fgms.org)  
We will be following all CDC and government guidelines at this event.  
Fallbrook Gem and Mineral Society proudly presents our annual Fall Festival of Gems – Reinvented! At this family-friendly swap meet you will discover gems, minerals, fossils, jewelry treasures and more! Visit amazing vendors featuring from rough stone to finished jewelry. Meet our team of friendly volunteers! Learn more about geology! and much, much more! Food will not be offered at this event but there are several amazing local restaurants ready to serve!

#### October 30-31, 2021 – Mariposa CA

Mariposa Gem and Mineral Club  
Mountains of Minerals Show  
Mariposa County Fairgrounds, 5007 Fairgrounds Rd.  
Saturday 10 AM-5 PM, Sunday 10 AM-4 PM  
Contact: Meredith Meehan, [mcmc@sti.net](mailto:mcmc@sti.net)  
Website: <http://mariposagemclub.org>

#### November 13-14, 2021 – Yuba City

Sutter Buttes Gem and Mineral Society  
29th Festival of Gems and Minerals  
Yuba – Sutter Fairgrounds  
442 Franklin Ave., Franklin Hall, Yuba City  
Saturday 10 AM – 5 PM, Sunday 10 AM – 4 PM  
Contact 916 677-6696, [horita@comcast.net](mailto:horita@comcast.net)  
Website: <http://sutterbuttesgemmin.org>

### 2022 Shows

#### January 15-16, 2022 – Exeter, CA

Tule Gem and Mineral Society  
Exeter Memorial Building, 324 N. Kaweah Ave., Exeter, CA  
Contact: (559) 802-6029

#### March 12-13, 2022 – Arcadia, CA

Pasadena Lapidary Society  
"Inspiration Unearthed", 62nd Annual Tournament of Gems  
Arcadia Masonic Center, 50 W. Duarte Rd., Arcadia  
Hours: 10-5 Daily  
Contact: Ellen Ferrell 1-727-512-0381  
Email: [ellenbf2007@aol.com](mailto:ellenbf2007@aol.com)  
Website: <https://www.pasadenalapidary.org>



## August Birthstone: Peridot, Spinel



# Searchers Gem & Mineral Society

## General Information



Check our website for unexpected changes in schedule!

[www.searchersrocks.org](http://www.searchersrocks.org)

**General Meetings:** 7 PM, 2nd Tuesday of each month, Jan - Nov

**Board Meetings:** 6:30 PM, 1st Tuesday of each month, Jan - Nov

**Workshop:** Thursday 5:30 to 10:00 PM and Saturday 2:30 to 7:00 PM

**Location:** Anaheim Downtown Community Center  
250 East Center St.  
Anaheim, CA 92805

**Mailing Address:** Searchers Gem & Mineral Society, Inc.  
P.O. Box 3492  
Anaheim, CA 92803

**Website:** [www.searchersrocks.org](http://www.searchersrocks.org)

<b>Membership Dues:</b>	<b>Individual</b>	<b>\$25</b>
	<b>Couple</b>	<b>\$35</b>

**Valid Jan.1-Dec.31, not prorated**

**Bulletin:** Submissions due 3rd Friday of the month via e-mail to:  
[editor@searchersrocks.org](mailto:editor@searchersrocks.org).

**Bulletin distributed 1st week of each month. Mail exchange bulletins to the editor:**

**Searchers —Linda Horn Editor**

**P.O. Pox 3492**

**Anaheim, Ca. 92803**

**Charter Date:** April 20, 1958

**Affiliations:** California Federation of Mineralogical Societies  
American Federation of Mineralogical Societies



# THE NEVADA MINERAL & BOOK COMPANY

<http://minbooks.net/>

342 S. Tustin Street • Orange, CA 92866  
Ph. 714-633-1549



## Tony's Lapidary Equipment Repair

**Tony Hempen**

Owner

26282 Calle Roberto  
San Juan Capistrano, CA 92675

949-922-7271

themp2@yahoo.com