

## SEARCHERS BOARD OFFICERS

- President: Heather Jaeckels
- 1st VP: Veronica Purura
- 2nd VP: Robert Burson
- Director: Jay Erb
- Secretary: Jamie Cassidy-Curtis
- Treasurer: Charlotte Spalding
- Federation Delegate: Kim Campbell Erb
- Committee Chairpersons
- Anaheim Arts Council: John O'Connor
- Editor: Linda Horn
- Historian: Beth Pelfrey
- Hospitality: Lorri Renck
- Library Membership: Beth Pelfrey
- Monthly Drawing: Skip Cone
- Sunshine: Sunshine
- Veteran's Coordinator: Larry Richey
- Website: Website
- Workshop: Adrian Callard
- Rock "N" Kids: Norbert Bernhardt

## IN THIS ISSUE

Field Trips	2
Club Meetings	3
Upcoming CFM Shows	4

## POINTS OF INTEREST

### FIELD TRIPS

### GENERAL MEETING

### SPEAKERS

# The Rock Slab News

The Searchers Gem & Mineral Society, Anaheim CA

VOLUME 53, ISSUE 12



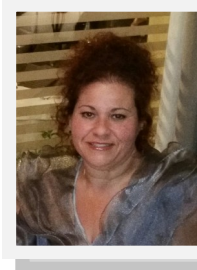
DECEMBER 2016

## The President's Message

Hello Searchers and Friends!

## A Very Merry Christmas & Happy New Year to All!

Whatever your background or holiday traditions, I wish you health and happiness this season and for the year to come.



## Another successful trip to DoBell Ranch....

Kim & Jay Erb just returned from Arizona with quite a haul of beautiful petrified wood. The family welcomed them into their home for Thanksgiving. Isn't that something! They are great folks. Searchers have supported their business and through our dealings have found they are struggling, as they have taken in their five grandchildren. Those of us that have trekked out there may want to get in on a Christmas care package idea Kim thought up. We are compiling some clothes and toys to send. If you are interested here is some info on the kids:

Devin - Age 11 - wears boys large - likes Legos

Ariel - age 9 - wears girls med/large - likes Monster High

Hailey - age 7 - wears girls 6x - likes Monster High

Patrick - age 3 - wears boys 4T - like Legos

Tiffany - age 2 - wears girls 2T - likes dolls



Kim and I will collect any items and be responsible for shipping them out. If you'd like to participate please contact either of us. **This is a great way to share your Christmas spirit!**

## Please remember to bring a rock or slab for the Veterans!

Heather Jaeckels 2016 President, Searchers Gem and Mineral Society

Christmas Party on December 3rd

See page 5 or details.

**Note change of address for party.**



## Field Trips

DATE	LEADER	LOCATION	STATUS

### FIELD TRIP: Quartzsite Rock and Gem Shows

Shows and Events 2016 - 2017

Desert Gardens - Gem & Mineral  
January 01 - February 28, 2017

Prospectors Panorama  
January 02 - January 15, 2017

QIA Pow Wow - Gems, minerals & jewelry  
January 18 - January 22, 2017

Tyson Wells Rock & Gem Show  
January 06 - January 15, 2017

Quartzsite Gold Show  
February 10-12, 2017 QIA building. Friday - Saturday 9-4 Sunday



*For field trip  
information*

*contact: Robert*

*Burson V.P. Field  
Trips, Searchers*

*Gem and Mineral  
Society,*

*bursonrocks@veriz*

*on.net*

### YEAR 2017 MEMBERSHIP RENEWAL

Dues are due in October for the following year. The cost is not much so please take the time now, while you're thinking about it, and fill out your renewal so you don't miss any newsletters

If you have joined in August or later, and paid the full amount, you have already paid for the new year so disregard this notice. When sending a check please put in full name for the club, banks no longer allow shortened names for 501C3's.

Please remit to:

The Searchers Gem and Mineral Society  
PO Box 3492  
Anaheim, CA 92803

Or turn in at meeting

## Searchers Show Update

### Searchers Show Update

The Searchers Show Committee is hard at work preparing for our show in May. Due to the Brookhurst remodeling, we won't know some details until just before the show. For example, if our patio vendors must be in the meeting rooms (because the patio isn't available), we will need to adjust the number of vendors because we can't fit as many as we hope in the meeting rooms. You can imagine how complicated this makes the process of our vendor contracts, which are being sent out soon. If we have fewer vendors it affects our bottom line, so we are looking at creative ways to cut costs without compromising the high quality of our show. We are working on signage and are hoping to bring in high school and other volunteers to help at Searcher tables. If you know of a Scout or other youth group in need of volunteer hours, please let us know.

### How can you help?

Distribute show fliers.

Post information about the show on Facebook and other social media.

Be sure to sign up to help at as many stations as you can. The kitchen takes a lot of staffing.

Wear your Searchers t-shirt.

Help with trailer loading and unloading.

Help with set up.

Give a vendor or a table volunteer a lunch or bio break.

Help with security.

Can you partner with me to run the Searchers sale/Minor Miner/t-shirt table? I need to spend more time checking on things during the show and need a table co-chair.

We need children's prizes for the tickets in grab bags and Minor Miner sand sifting.

We need prizes for all ages for hourly ticket drawings at the hospitality desk.

Go through your stash and bring some materials for the silent auction.

We need tumbled or beautiful or interesting stones or related items for the grab bags. We will need to make about 400 grab bags this year; that is a lot of material!

Help with take down and clean up.

Consider donating supplies for the show instead of turning in receipts for reimbursement. We can give you a tax letter because we are non-profit!

Have a wonderful winter holiday and keep on rocking!

Margaret Hogarth

[hogarth.m@gmail.com](mailto:hogarth.m@gmail.com) 909-815-3045



### Show Meetings:

December 3, 2016      January 7, 2017

February 4, 2017      March 4, 2017      April 1, 2017

We meet from 1-2:30 p.m. at Veronica's house, 676 S. Scout Trail, Anaheim Hills, CA 92807.

<https://www.google.com/maps/place/676+S+Scout+Trail,+Anaheim,+CA+92807/@33.838884,-117.786123,17z/data=!3m1!4b1!4m2!3m1>

## Club Meeting Activity

DATE	PRESENTER	SUBJECT
none	none	Christmas party

For a more complete listing of shows go to web-site: [www.cfmsinc.org](http://www.cfmsinc.org)

## Upcoming 2016 & 2017 CFMS Gem Shows

### DECEMBER

**December 3 - 4:** BARSTOW, CA Mojave Desert Gem & Mineral Society Cora Harper Community Center 841 S. Barstow Road Hours: 10 - 5 daily Contact: Danny Watts, (760) 373-1309 Email: [dwatts@msn.com](mailto:dwatts@msn.com) Website: [www.mdgms.net](http://www.mdgms.net)

**December 9 - 10:** RIALTO, CA Orange Belt Mineralogical Society City Hall Lot 105 South Palm Avenue Hours: 9 - Dusk daily Contact: Jessica Pierson, (909) 381-0089 Email: [OBMTailgateInfo@gmail.com](mailto:OBMTailgateInfo@gmail.com) Website: <http://OBMSrocks.yolasite.com>

### 2017

#### JANUARY

**January 21 - 22:** EXETER, CA Tule Gem & Mineral Society, Visalia Exeter Veterans' Memorial Building 324 N. Kaweah Avenue Hours: Sat 10 - 5; Sun 10 - 4 Contact: Laura Manser (559) 303-0632 Email: [ldriggs5@gmail.com](mailto:ldriggs5@gmail.com) Website: [www.tulegem.com](http://www.tulegem.com)

#### FEBRUARY

**February 17 - 26:** INDIO, CA San Geronio Mineral & Gem Society Riverside County Fair & National Date Festival 82-503 Highway 111 Hours: 10 - 10 daily Contact: Bert Grisham, (915) 849-1674 Email: [bert67@verizon.net](mailto:bert67@verizon.net)

**February 18 - 19:** ANTIOCH, CA Antioch Gem Club Contra Costa County Fairgrounds 1201 West 10th Street Hours: 10 - 5 daily Contact: Brenda Miguel, (925) 301-6957 Email: [brenda.miguel@yahoo.com](mailto:brenda.miguel@yahoo.com) Website: [www.antiochlapidaryclub.com](http://www.antiochlapidaryclub.com)

**February 25 - 26:** VALLEJO, CA Vallejo Gem & Mineral Society Solano County Fairgrounds, McCormack Hall 900 Fairgrounds Drive Hours: 10 - 5 daily Contact: Dan Wolke, 707 334-2950 Email: [dncwolke@sbcglobal.net](mailto:dncwolke@sbcglobal.net) Website: [www.vjgems.org](http://www.vjgems.org)

#### MARCH

#### March 3 - 5: NEWARK, CA

Mineral & Gem Society of Castro Valley Newark Pavilion 6430 Thornton Avenue Hours: Fri & Sat 10 - 6; Sun 10 - 5 Contact: Cathy Miller, (510) 305-4196 Email: [showchair@mgscv.org](mailto:showchair@mgscv.org) Website: [www.mgscv.org](http://www.mgscv.org)

#### March 4 - 5: ARCADIA, CA

Monrovia Rockhound L. A. County Arboretum & Botanical Garden 301 North Baldwin Avenue Hours: 9:00 - 4:30 daily Contact: Jo Anna Ritchey, (626) 359-1624 Email: [joannaritchey@gmail.com](mailto:joannaritchey@gmail.com) Website: [www.Moroks.com](http://www.Moroks.com)

#### March 4 - 5: LEMOORE, CA

Lemoore Gem & Mineral Society Lemoore Trinity Hall 470 Champion Street Hours: Sat 10 - 6; Sun 10 - 4 Contact: Christopher Wertinberger, (559) 309-3433 Email: [kim-morrell@hotmail.com](mailto:kim-morrell@hotmail.com)

#### March 4 - 5: VENTURA, CA

Ventura Gem & Mineral Society Ventura County Fairgrounds 10 W. Harbor Boulevard Hours: Sat 10 - 5; Sun 10 - 4 Contact: Terry Wilson, (805) 312-8467 Email: [info@vgms.org](mailto:info@vgms.org) Website: [www.vgms.org](http://www.vgms.org)

#### March 11 - 12: SAN MARINO, CA

Pasadena Lapidary Society San Marino Masonic Center 3130 Huntington Drive Hours: Sat 10 - 6, Sun 10 - 5 Contact: Marcia Goetz, (626) 260-7239 Email: [pasadenalapidary@aol.com](mailto:pasadenalapidary@aol.com) Website: [www.pasadenalapidarysociety.org](http://www.pasadenalapidarysociety.org)

#### March 11 - 12: SPRECKELS, CA

Salinas Valley Rock & Gem Club Spreckel's Veteran's Hall 5th & Llano Streets Hours: 10 - 5 daily Contact: Gary Beck, (831) 679-2896 Email: [garybeckpca@yahoo.com](mailto:garybeckpca@yahoo.com) Website: <http://salinasrockandgem.pagecloud.com>

#### March 11 - 12: TURLOCK, CA

Mother Lode Mineral Society, Modesto Stanislaus County Fairgrounds 900 North Broadway Hours: 10 - 5 daily Contacts: Bud & Terry McMillin, (209) 524-3494 Email: [bbud.mcmillan.b7vj@statefarm.com](mailto:bbud.mcmillan.b7vj@statefarm.com) Website: [www.motherlodemineralsociety.com](http://www.motherlodemineralsociety.com)

#### March 25 - 26: ANGELS CAMP, CA

Calaveras Gem & Mineral Society Calaveras County Fairgrounds 101 Frogtown Road Hours: Sat 10 - 5; Sun 10 - 4 Contact: Dave Muster (209-518-8795) or Anna Christiansen (209-847-1173) Email: [annachristiansen7132@comcast.net](mailto:annachristiansen7132@comcast.net) Website: [www.calaverasgemandmineral.org](http://www.calaverasgemandmineral.org)

## December Birthstones - Turquoise Zircon Tanzanite





# Searcher's Holiday Banquet

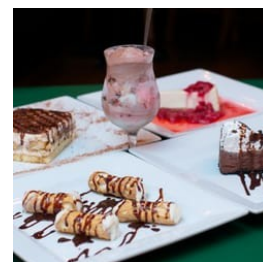
**Carolina's Italian Restaurant**

**December 3th 2016 at 5 P. M.**

**915 S Harbor Blvd, Anaheim, CA**

**Note address change**

**Price \$20**



Questions: Veronica's cell # (714) 501-9959 or return email ([angeldragonoflight@yahoo.com](mailto:angeldragonoflight@yahoo.com))

Checks made out to: "Searcher's Society" or "Searcher's Gem and Mineral Society"

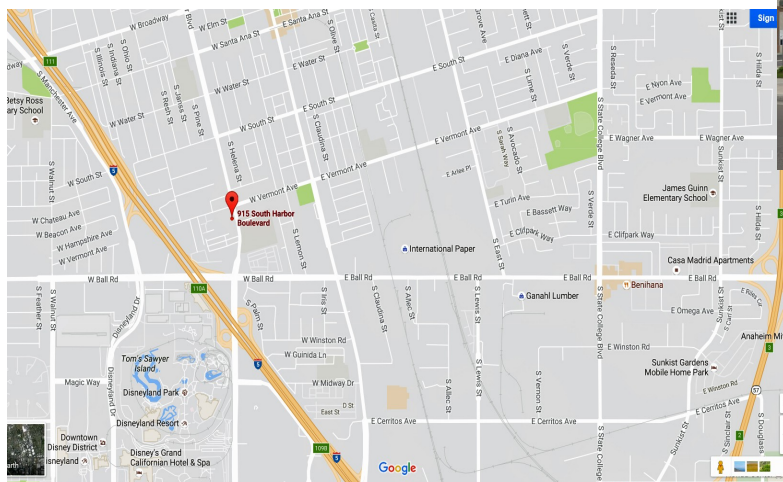
Cash or Check payments need to be sent to: P.O. Box 3492, Anaheim, CA 92803

Deadline for payments and sign-up needs to be no later than: Wednesday November 30th

Gift exchange: only those who bring a wrapped gift may participate in the gift exchange, and the gift should preferably be related to rocks/rock-hounding/minerals if you can (minimum \$10 or more value)

Dinner Choices: The dinner is buffet style with a variety of Italian options

Desserts Options: Tiramisu, Spumoni



# JTI Jewel Tunnel Imports

13100 Spring Street, Baldwin Park, CA 91706 Tel 626-814-2257 ■ [www.jeweltunnel.com](http://www.jeweltunnel.com)

An invitation for the members and friends of the

## Searchers (this invite is for Searcher members only)

Attend an open house at Jewel Tunnel Imports  
Saturday December 10th 10 AM to 4PM

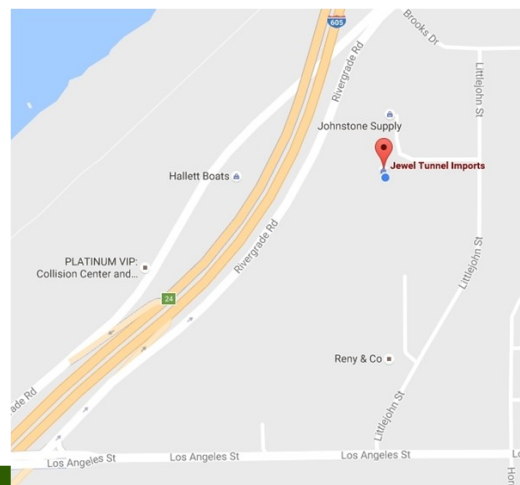
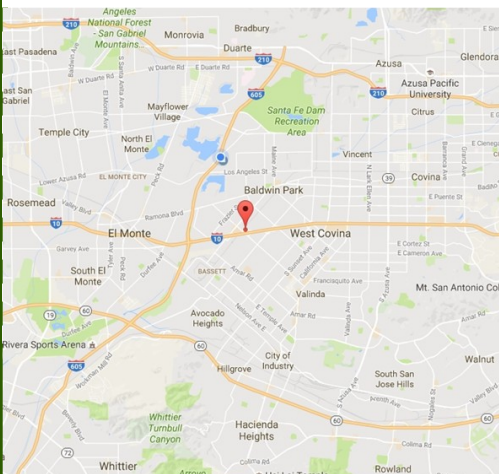
Jewel Tunnel Imports is a leading wholesale distributor of mineral specimens, crystals, fossils, tumbled stones and many different kinds of lapidary items. We have a warehouse in excess of 10,000 sq. feet full of mineral-related natural history items, perhaps the largest of its kind in the United States. To see some of our inventory ahead of your visit, please visit our website, <https://www.jeweltunnel.com/>

**This popular annual event is just for mineral and geology oriented groups such as the students and faculty of various colleges and universities and members of local gem and mineral societies. These open houses, by invitation only, held a few week-ends preceding the winter holidays, offer a chance for individuals belonging to these groups to buy minerals and crystals at wholesale prices and to learn something about the wholesale gem and mineral business. Refreshments will be served.**

Jewel Tunnel Imports is a wholesale-only warehouse and this invitation is only for the date of the open house. If you wish to return during the year to purchase items, you will need to obtain your own resale permit (only if you will be reselling your purchases) from the California State Board of Equalization. For the open house, 9% sales tax will be charged unless you can provide your resale permit. All sales are final.

**PLEASE NOTE: Out of consideration to our staff and to customers who will be in on the Monday following the open house, we ask that your group takes care to keep shelves neat and orderly, by returning items exactly as they find them, replacing lids to the proper boxes and keeping stacks neat. As the group leader, please help supervise your participants.**

**Directions to Jewel Tunnel Import's warehouse. (Also at [jeweltunnel.com](http://jeweltunnel.com))**



# Searchers Gem & Mineral Society

## General Information



Check our website for unexpected changes in schedule!

[www.searchersrocks.org](http://www.searchersrocks.org)

**General Meetings:** 7 PM, 2nd Tuesday of each month, Jan - Nov

**Board Meetings:** 6PM, 1st Tuesday of each month, Jan - Nov

**Workshop:** Thursday, 6 – 10 PM, free wire-wrap class.

Saturday, 3 – 7 PM Free silver-smithing class 1st, 2nd, 3rd Saturdays (schedule varies).

**Location:** Anaheim Downtown Community Center  
250 East Center St.  
Anaheim, CA 92805

**Mailing Address:** Searchers Gem & Mineral Society, Inc.

P.O Box 3492

Anaheim, CA 92803

**Website:** [www.searchersrocks.org](http://www.searchersrocks.org)

<b>Membership Dues:</b>	<b>Individual</b>	<b>\$25</b>
	<b>Couple</b>	<b>\$35</b>
	<b>Junior (17 &amp; under)</b>	<b>\$10</b>

Valid Jan.1-Dec.31, not prorated

**Bulletin:** Submissions due 3rd Friday of the month via e-mail to: [editor@searchersrocks.org](mailto:editor@searchersrocks.org).

Bulletin distributed 1st week of each month. Mail exchange bulletins to the editor:

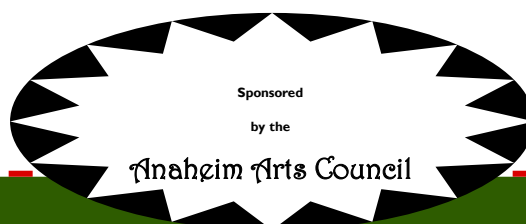
Searchers —Linda Horn Editor

P.O. Box 3492

Anaheim, Ca. 92803

**Charter Date:** April 20, 1958

**Affiliations:** California Federation of Mineralogical Societies



## PtCreations

2812-B Walnut Ave.  
Tustin, Ca 92780 714-904-2181  
[www.ptcreations.net](http://www.ptcreations.net)

## THE NEVADA MINERAL & BOOK COMPANY

<http://minbooks.net/>

342 S. Tustin Street • Orange, CA 92866  
Ph. 714-633-1549

## Rusty's Gold & Treasure Hunting Supply

Club members show your ID card and receive a 10% off purchases over \$100

Authorized dealer for Garrett, Fisher, and Tesoro metal detectors

390 S. Tustin Street, Orange, CA 92866

714 693-GOLD (4653). Store hours: Tu - Sat 10am - 6pm



### The Agateer Lapidary Supply

[www.theagateer.com](http://www.theagateer.com)

(657) 464-0400

Licensed Dealer

Saws, Diamond Saw Blades – Cutting Oil – Dressing Sticks  
Cabbing Machines – Diamond Wheels – Dop Supplies  
Tumble-Bee Tumblers, Grit Kits, Tumbling Media

Free Delivery within Orange County for orders over \$150



15131 Triton Lane #117  
Huntington Beach, CA 92649  
714-893-6643  
[www.sccgemology.org](http://www.sccgemology.org)