



South Cady Mountains Day Trip

Saturday 10/26/19, 8am

Leader: Andrew Bloxom (vehicle: Silver Subaru Crosstrek)
Cell# (571)-217-9536 (****Please text only during working hours*)

The Anaheim Searchers would like to kick-off the 2019-2020 collecting season with a day trip to Sleeping Beauty Mountain in the South Cady's. This area and the nearby canyons, washes, and hills are littered with some of the most beautiful specimens of jaspers, jasp-agates, amygdules, plumes, and stringers (Fig 1). Additionally, along the Power Line Rd. are numerous old diggings and spots to collect. We will meet at 8am at the Power Ln. location shown on map (Fig 3) with GPS coordinates and directions, leave at 8:30am and start around the slopes of Sleeping Beauty Mountain in the morning, then take an excursion down Power Line Rd, and explore for some seam agate near an old barite mine (Fig. 2). We will plan to wrap up around 5pm.

Bring your camping gear if you want, but there will be no formal camp or potluck since this is a last-minute trip. 4x4 is recommended, but the spots are not too far from the main road, so we can carpool easily if needed. Bring water and sun protection.

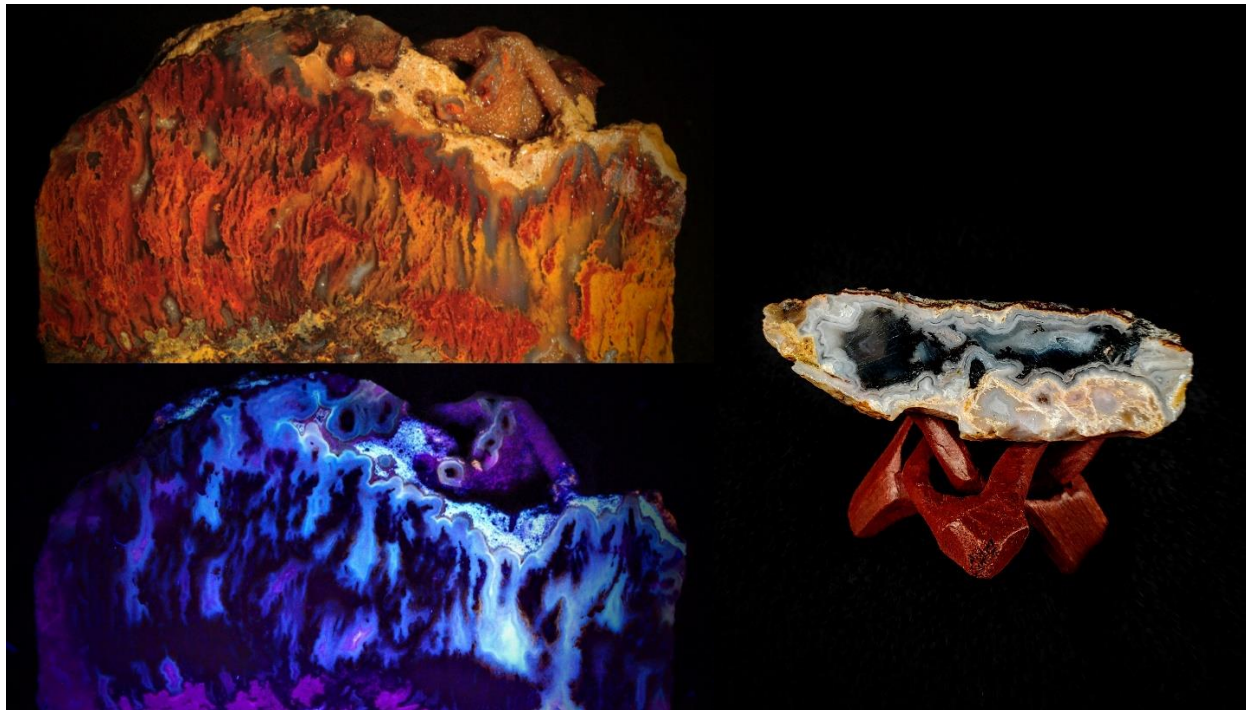


Figure 1



Figure 2 – Seam jasp agate with hematite from South Cady mine dump

(email: Andrew.bloxom@gmail.com, Field Trip Chairperson)

Name:

Latitude:

Longitude:

Description

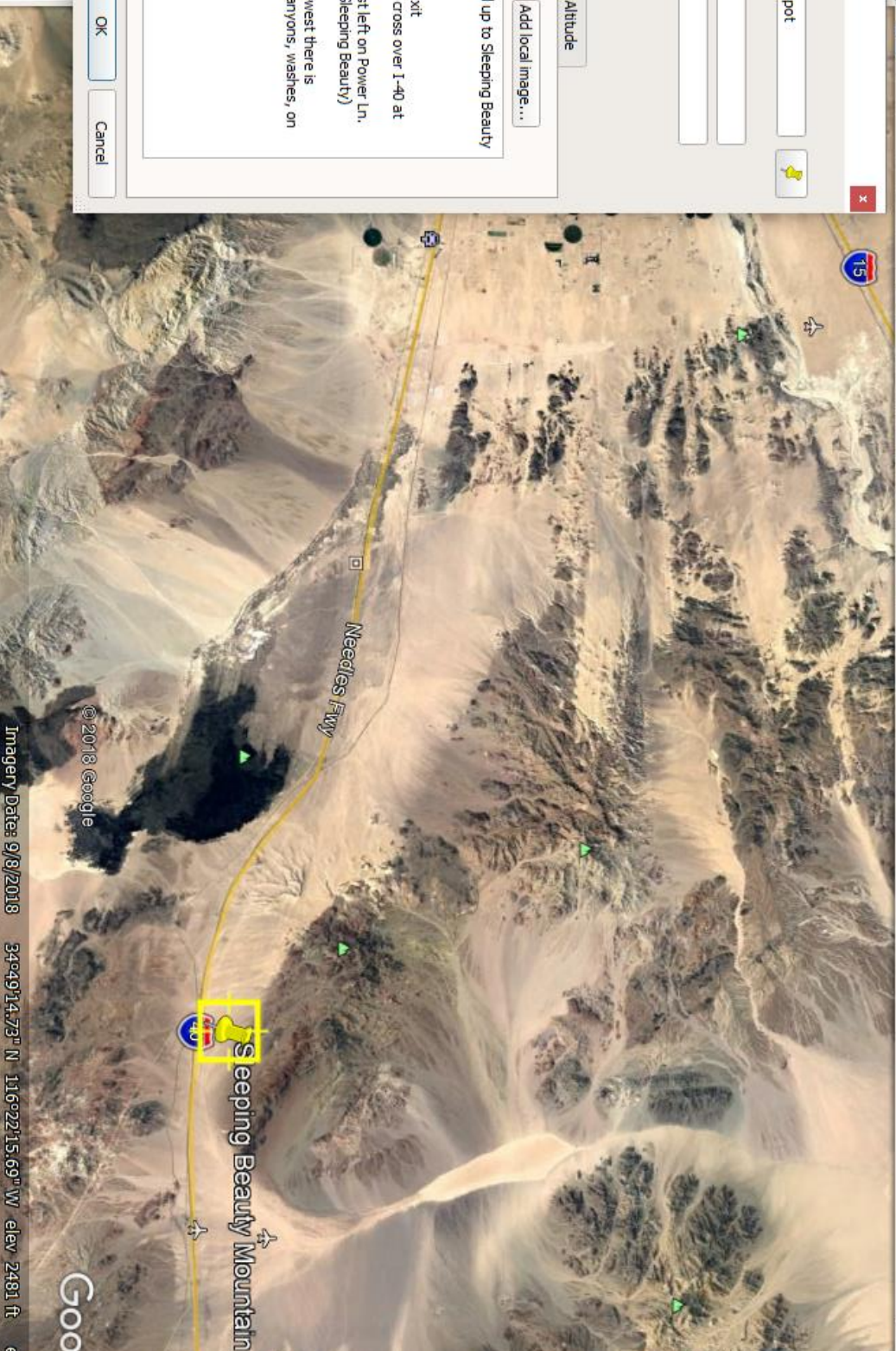
This is a meet up spot on the dirt road up to Sleeping Beauty Mountain in the South Cady's.

Directions:

In Barstow take I-40 E to Hector Rd exit
Go East on Rt 66 National Trails Hwy, cross over I-40 at Latic Rd
! Searchers Sign ! | <-- ! Take the 1st left on Power Ln. after the crossing (dirt rd leading to Sleeping Beauty)

All along the power line rd going east-west there is fascinating materials to collect up in canyons, washes, on mtrl

Global Awareness
 More
 Terrain



Imagery Date: 9/8/2018

34°49'14.73" N 116°22'15.69" W elev 2481 ft

Goog