

## SEARCHERS BOARD OFFICERS

- President: Heather Jaeckels
- 1st VP: Veronica Purura
- 2nd VP: Robert Burson
- Director: Jay Erb
- Secretary: Jamie Cassidy-Curtis
- Treasurer: Charlotte Spalding
- Federation Delegate:
  - Kim Campbell Erb
- Committee Chairpersons
- Anaheim Arts Council:
  - John OConnor
- Editor: Linda Horn
- Historian: Beth Pelfrey
- Hospitality: Lorri Renck
- Library Membership:
  - Beth Pelfrey
- Monthly Drawing:
  - Skip Cone
- Sunshine:
- Veteran's Coordinator:
  - Larry Richey
- Website:
- Workshop: Adrian Callard
- Rock "N" Kids: Norbert Bernhardt

## IN THIS ISSUE

Field Trips	2
Club Meetings	3
Upcoming CFM Shows	4

### POINTS OF INTEREST

#### FIELD TRIPS

#### GENERAL MEETING

#### SPEAKERS

# The Rock Slab News

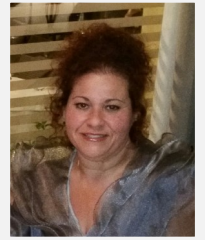
The Searchers Gem & Mineral Society, Anaheim CA

VOLUME 53, ISSUE 9

SEPTEMBER 2016



## The President's Message



No message from the President this month.

It is never too soon to be planning for the next show. Plenty of help is always needed. Everyone is invited to show meetings to see what is being planned and where help is needed. Come to a meeting and find out.

### Searchers' 2017 Show meetings

Show meetings are normally held on the first Saturday of the month from 1-2:30 p.m., except as noted below.

September 10, 2016 (second Saturday)  
October 1, 2016  
November 12, 2016 (second Saturday)  
December 3, 2016  
January 7, 2017

February 4, 2017  
March 4, 2017  
April 1, 2017

Meetings will be held at Veronica's house, 676 S. Scout Trail, Anaheim Hills, CA 92807.



## Field Trips

DATE	LEADER	LOCATION	STATUS
9, 2-4		Holbrook Az.	planned

### Field Trip: Holbrook Az. Sept. 2-4

**ITINERARY FOR HOLBROOK TRIP 2016** Updated Aug. 21

This trip is being planned by the Pasadena Lapidary Society

<http://www.pasadenalapidarysociety.org/Calendar.html>

#### Attending this field trip is limited.

- If you are planning to attend, we need to know so we can add you name to the list!
- Email your name, names of those in your party, cell phone number and your club affiliation to [pasadenalapidary@aol.com](mailto:pasadenalapidary@aol.com).
- This field trip is suitable for all types of vehicles.
- Bring water, sturdy shoes, hat, gloves, layered clothing, at least (3) 5-gallon buckets, camera, lunch, a full tank of gas, FRS radio on channel 4.11.
- The base hotel is the Motel 6 at 2514 Navajo Blvd, Holbrook, AZ. (928) 524-6101. Senior rates available.
- Detailed itinerary and maps will be distributed each morning.

#### Friday, September 2nd – Drive to Holbrook, AZ.

1. Route 1 - On your own: The fast route is 8.5 hours (plus stops for gas, photos, food and such) via I-40 east from Barstow, CA, through Needles, Kingman, Flagstaff and Winslow.

A. It's worth driving through Seligman on old U.S. Route 66 on the way.

B. If you have time, stop and walk through La Posada, the historic Santa Fe Railroad hotel in Winslow.

2. Route 2 - group trip: Our vehicle will take the route less traveled - through Phoenix, Globe and Snowflake. It is 9.5 hours (plus stops for gas, photos, food and such). If you opt for this longer route, and want to travel with a group of us, meet at the Lowes Hardware in San Dimas at 5:45am (633 W. Bonita Avenue). Look for the PLS banner. Get breakfast at the McDonalds at this location.

A. We'll leave at 6am and head east on I-10 to Quartzsite, where we'll stop for gas and a stretch at the Pilot in Quartzsite, AZ (take the first Quartzsite exit, turn left and then right on Main St.

B. After this quick stop we'll continue east on Main Street and rejoin I-10 East. We'll continue through Phoenix to our lunch stop in Mesa, AZ. Continue on the I-10 through Phoenix toward Tucson. Merge onto US-60 E via exit 154

toward Mesa/Globe. Then 7.63 miles and take the Country Club Drive exit. Turn left onto Country Club Drive to Denny's at 1150 S. Country Club Drive, Mesa AZ. We expect to be there just after noon on Friday.

C. After lunch we will continue east on U.S. 60, stopping at the Copper City Rock Shop in Globe before continuing east. The highway winds through the scenic Salt River Canyon and up along the cliffs to the Mogollon Rim and to the old lumber town of Show Low, where we will turn north on AZ-77 into the pioneer town of Snowflake.

D. At Snowflake we will take a detour to a private ranch where we will have the opportunity to collect up to 100 pounds of petrified wood. 50# is equal to a loaded 5 gallon plastic bucket, and the fee for collecting is \$20 per bucket. A map to the location will be distributed at the Copper City Rock Shop.

E. After collecting in Snowflake we will make a leisurely drive into Holbrook, to our hotel for the night.

For field trip  
information

contact: Robert

Burson V.P. Field

Trips, Searchers

Gem and Mineral

Society,

[bursonrocks@verizon.net](mailto:bursonrocks@verizon.net)

on.net

## Field Trip: Holbrook Az. Sept. 2-4 (Con.)

3. Overnight at the Motel 6 in Holbrook. Arrive at your own pace.

A. There is a Denny's next to the motel that gives a discount to motel guests. Those on this trip are welcome to plan breakfast and dinner meals here. They can also make lunch sandwiches if you don't bring your own fixin's.



**Saturday, September 3rd** – Holbrook Area 1. Pack a lunch and meet in the motel parking lot after breakfast at 9am. Sign mandatory releases and receive the day's itinerary.

2. Drive to Petrified Forest National Park Visitor's Center. View video and exhibits.

3. Self-drive tour (28 miles) of Petrified Forest National Park (\$20 per car fee. Leave any petrified wood items in your motel room before you leave Holbrook). Enjoy our picnic lunches on our own in the park.

4. About 1pm we will visit a factory in St. Johns that makes petrified wood products.

5. At about 1:45pm we will head for the Dobell Ranch to collect petrified wood.

We'll be there for about 1-1/2 hours. Visit the historic Dobell Museum.

6. Drive to visit Jim Gray's Petrified Wood shop near Holbrook. Use the restroom and visit their shop and yard full of petrified wood.

7. When you are ready, drive on your own the short distance to Holbrook. Drive through this old Route 66 town. Check out the Wigwam Motel at 811 W. Hopi Drive in Holbrook and return to our motel.

8. Dinner on your own or at Denny's. (6pm?)

**Sunday, September 4th** – Holbrook Area

- Pack a picnic lunch and meet in the motel parking lot after breakfast at 9am.

- Drive to Meteor Crater where, about 50,000 years ago, an iron-nickel hunk of space rock struck here, leaving a giant crater nearly one mile across, 2.4 miles in circumference and more than 550 feet deep. Visit the crater and view the meteor specimens and museum.

- Lunch location TBD. Afternoon of collecting petrified wood on a private ranch and other areas near Joseph City.

- From here you are free to head out to other interesting places - such as those in the Navajo Nation, Flagstaff, the Grand Canyon and the Walnut Canyon National Monument (3 Walnut Canyon Rd, Flagstaff, AZ). Try your hand at gaming at the Twin Arrows Navajo Casino Resort at 22181 Resort Blvd, Flagstaff, AZ.

- Or you can return to our motel for a casual farewell dinner at Denny's. (6pm?)

**Monday, September 5th** Labor Day Holiday —

Return to your home or other northern Arizona locations at your leisure

**September Speaker:** I met Lucas during the West Coast Show in the spring and he had an amazing selection of macro-photography of gemstones (especially inclusion photos). He has kindly accepted an offer to present us many of his secrets of macro photography for our group. So bring your notebooks because we're about to get an in-depth look at the macro photography process

## Club Meeting Activity

DATE	PRESENTER	SUBJECT
9-13-2016	Lucas Fassari	"Gemstone Macro Photography"
10-11-2016	None	Holiday Boutique
11-8-2016	None	Pie Party and Cabinet Member Elections

For a more complete listing of shows go to web-site: [www.cfmsinc.org](http://www.cfmsinc.org)

## Upcoming 2016 CFMS Gem Shows

### SEPTEMBER

September 16 - 18: PLACERVILLE, CA 77th CFMS Show & Convention Hosted by El Dorado County Mineral & Gem Society El Dorado County Fairgrounds 100 Placerville Drive Hours: Fri - Sun 10 - 5 daily Contact: Barbara Terrill, 530 676-2375 Email: [info@rockandgemshow.org](mailto:info@rockandgemshow.org) Web Site: [www.cfms2016show.com](http://www.cfms2016show.com)

September 17 - 18: CHICO, CA Feather River Lapidary & Mineral Society, Oroville Silver Dollar Fairgrounds 2357 Fair Street Hours: Sat 9:30 - 5; Sun 9:30 - 4 John Scott, (530) 321-6331 Email: [jweazel@sbcglobal.net](mailto:jweazel@sbcglobal.net) Website: [www.featherriverrocks.org](http://www.featherriverrocks.org)

September 24 - 25: LODI, CA Stockton Lapidary & Mineral Club Lodi Grape & Harvest Festival Grounds 413 East Lockford Street Hours: 10 - 5 daily Contact: Jerold Kyle, (209) 368-9411 Email: [jerold-kyle@yahoo.com](mailto:jerold-kyle@yahoo.com) Website: [www.stocktonlapidary.com](http://www.stocktonlapidary.com)

September 24 - 25: MONTEREY, CA Carmel Valley Gem & Mineral Society Monterey Fairgrounds 2004 Fairgrounds Road Hours: Sat 10 - 6; Sun 10 - 5 Contact: Janis Rovetti, (831) 372-1311 Email: [janis12@sbcglobal.net](mailto:janis12@sbcglobal.net) Website: [www.cvgms.org](http://www.cvgms.org)

September 24 - 25: REDWOOD CITY, CA Sequoia Gem & Mineral Society Community Activities Building 1400 Roosevelt Avenue Hours: 10 - 5 daily Contact: Catherine Fraser,

650-954-6020 Email: [catherine@fraseradv.com](mailto:catherine@fraseradv.com) Website: [www.sequoiagemandmineralsociety.org](http://www.sequoiagemandmineralsociety.org)

September 24 - 25: SANTA ROSA, CA Santa Rosa Mineral & Gem Society Wells Fargo Center for the Arts 50 Mark West Springs Road Hours: Sat 10 - 6; Sun 10 - 5 Contact: Jolene Coon Website: [www.srmgs.org](http://www.srmgs.org)

September 28 - October 2: YUCCA VALLEY, CA Hi-Desert Rockhounds Sportsman's Club of Joshua Tree 6225 Sunburst Street Hours: 9 - 6 daily Contact: Wayne Hamilton, (760) 366-2915 Email: [jtsportsmans@yahoo.com](mailto:jtsportsmans@yahoo.com) Website: [www.jtsportsmansclub.com/gem.html](http://www.jtsportsmansclub.com/gem.html)

### OCTOBER

October 1 - 2: BORON, CA Mojave Mineralogical Society Boron Recreation Park 26998 John Street Hours: Sat 9 - 5; Sun 9 - 4 Contact: Bruce Davies, (760) 338-8829 Email: [daviesb@yahoo.com](mailto:daviesb@yahoo.com)

October 1 - 2: VISTA, CA Vista Gem & Mineral Society Antique Gas & Steam Engine Museum 2040 North Santa Fe Avenue Hours: Sat 10 - 5; Sun 10 - 4 Contact: Ray Pearce, (760) 726-7570 Email: [raysrocks@cox.net](mailto:raysrocks@cox.net)

October 8 - 9: ANDERSON, CA Shasta Gem & Mineral Society Shasta District Fairgrounds 1890 Briggs Street Hours: Sat. 9 - 5; Sun. 10 - 4 Steve Puderbaugh, 530-604-

2951 Email: [kelly13@shasta.com](mailto:kelly13@shasta.com) Show Website: [www.shastagemandmineral.com](http://www.shastagemandmineral.com)

October 8 - 9: GRASS VALLEY, CA Nevada County Gem & Mineral Society Nevada County Fairgrounds (Main Building) 11228 McCourtney Road Hours: 10 - 5 daily Contact: Todd Lawson, (530) 305-9212 Email: [webmaster@ncgms.org](mailto:webmaster@ncgms.org) Website: [www.ncgms.org](http://www.ncgms.org)

October 8 - 9: TRONA, CA Searles Lake Gem & Mineral Society SLGM Show Building 13337 Main Street Hours: Sat 7 - 5; Sun 7 - 4 Jim and Bonnie Fairchild, (760) 372-5356 Email: [slgms@iwwisp.com](mailto:slgms@iwwisp.com) Website: [www1.iwwisp.com/tronagemclub](http://www1.iwwisp.com/tronagemclub)

October 15: WEST HILLS, CA Woodland Hills Rock Chippers First United Methodist Church 22700 Sherman Way Hours: 10 - 5 Contact: Mary Beth Pio, (818) 349-9164 Email: [info@rockchippers.org](mailto:info@rockchippers.org) Website: [www.rockchippers.org](http://www.rockchippers.org)

October 15 - 16: WHITTIER, CA Whittier Gem & Mineral Society Whittier Community Center 7630 Washington Avenue Hours: 10 - 5 daily Contact: Frank Winn, (626) 239-5457 Email: [rkhnfdw@gmail.com](mailto:rkhnfdw@gmail.com)

October 22 - 23: LOS ALTOS, CA Peninsula Gem & Geology Society Los Altos Youth Center One No. San Antonio Road Hours: 10 - 5 daily Contact: Steve Jobe, (408) 834-5384 Email: [steve\\_job@sbcglobal.net](mailto:steve_job@sbcglobal.net) Website: [www.pggs.org](http://www.pggs.org)

## September Birthstone - Sapphire



## IN THE SHOP: Let the Chips Fall Where They May

**Note:** This article is taken from the September Issue of the AFMS Newsletter.

Yes, in most instances letting the chips fall wherever they may is about all we can do. When it comes to our hobby, however, we often try to exercise what I call - chip control.

Most of our lapidary work creates both large and small chips during the various activities of that work. Faceting, cabochon and sphere making, slab and trim sawing, and even some carving are usually performed wet using water; treated water; or oil. Wet work captures the dust and small chips, and together fall to the bottom of the pan -- instead of the entering the air we breathe. Working wet is a form of chip control. Some lapidary operations, notably carving, are done dry with any dust and small chips captured and diverted using some kind of fan, hood and duct-work. This too is a form of chip control.



Many activities in our hobby produce a different kind of chip -- a large chip. A chip whose flight, direction, velocity, and momentum are of concern determine how we manage chip control. Large chips are produced when a rock pick strikes a rock, when a sledge/crack hammer impacts a chisel, when a rock is tossed aside and in its landing hits another rock, and even when a bucket of rocks upended. Chips are also produced by seldom noted processes. For example, at shows I have noted demonstrations of geode cracking, with some of those demonstrations using chain and cutter, cast iron pipe cutters to crack the geodes. I have seen hydraulic and screw type matrix / specimen trimmers produce chips. Pretty much every operation to alter, separate, or play with the form of a hard rock produces chips.

How do we perform chip control, especially with those large chip producing procedures? First we should protect ourselves with proper safety gear such as gloves, long pants and shirt sleeves, eye protection, and whatever protective gear is appropriate for the situation. Now, PPE (personal protective equipment) is all well and good but what about the other folks in the vicinity of the chip producing activity? What do we do in that case to address safety concerns? It is possible to shield an area from flying chips by positioning our body to protect others.

We can utilize collecting buckets, screens, or other barriers to control the flight of chips. If blocking of chip flight is impossible, perhaps we can suggest that folks in the area wear their own PPE. In fact, if the persons in the area are our own kids, we can insist on it! Sometimes we can capture chips by carefully using our gloved hand to divert flying chips. Even fabric draped over the chip producing area can be effective with chip control. On occasion it may even be possible to move the chip producing activity to a secluded area. It may sometimes be more prudent to hold off any major chip production until people in the area have vacated the space. Rockhounds are undeniably creative people.

We, as respectful rockhounds should mind where our chips fall. After all, we certainly want to be good, considerate, and thoughtful rockhounds.

Be safe, think safety, because your safety matter.

Written by Ellery Borow AFMS Safety Chair



## Searcher's Potluck - Picnic 2016 Report



Saturday, August 6th

It was a great day for a picnic, especially for August, not too hot with a nice breeze. There was a great turnout and plenty of food for all. Only little catch was some stubborn charcoal but rockhounds never say quit and the BBQ was on.



# Searchers Gem & Mineral Society

## General Information



Check our website for unexpected changes in schedule!

[www.searchersrocks.org](http://www.searchersrocks.org)

**General Meetings:** 7 PM, 2nd Tuesday of each month, Jan - Nov

**Board Meetings:** 6PM, 1st Tuesday of each month, Jan - Nov

**Workshop:** Thursday, 6 – 10 PM, free wire-wrap class.

Saturday, 3 – 7 PM Free silver-smithing class 1st, 2nd, 3rd Saturdays (schedule varies).

**Location:** Anaheim Downtown Community Center  
250 East Center St.  
Anaheim, CA 92805

**Mailing Address:** Searchers Gem & Mineral Society, Inc.

P.O Box 3492

Anaheim, CA 92803

**Website:** [www.searchersrocks.org](http://www.searchersrocks.org)

<b>Membership Dues:</b>	<b>Individual</b>	<b>\$25</b>
	<b>Couple</b>	<b>\$35</b>
	<b>Junior (17 &amp; under)</b>	<b>\$10</b>

Valid Jan.1-Dec.31, not prorated

**Bulletin:** Submissions due 3rd Friday of the month via e-mail to: [editor@searchersrocks.org](mailto:editor@searchersrocks.org).

Bulletin distributed 1st week of each month. Mail exchange bulletins to the editor:

Searchers —Linda Horn Editor

P.O. Pox 3492

Anaheim, Ca. 92803

**Charter Date:** April 20, 1958

**Affiliations:** California Federation of Mineralogical Societies



## PtCreations

2812-B Walnut Ave.  
Tustin, Ca 92780 714-904-2181  
[www.ptcreations.net](http://www.ptcreations.net)

## THE NEVADA MINERAL & BOOK COMPANY

<http://minbooks.net/>

342 S. Tustin Street • Orange, CA 92866  
Ph. 714-633-1549

## Rusty's Gold & Treasure Hunting Supply

Club members show your ID card and receive a 10% off purchases over \$100

Authorized dealer for Garrett, Fisher, and Tesoro metal detectors

390 S. Tustin Street, Orange, CA 92866

714 693-GOLD (4653). Store hours: Tu - Sat 10am - 6pm



### The Agateer Lapidary Supply

[www.theagateer.com](http://www.theagateer.com)

(657) 464-0400

Licensed Dealer

Saws, Diamond Saw Blades – Cutting Oil – Dressing Sticks  
Cabbing Machines – Diamond Wheels – Dop Supplies  
Tumble-Bee Tumblers, Grit Kits, Tumbling Media

Free Delivery within Orange County for orders over \$150



15131 Triton Lane #117  
Huntington Beach, CA 92649  
714-893-6643  
[www.sccgemology.org](http://www.sccgemology.org)