



## Club Officers 2001

### ☆☆☆☆ Club Officers ☆☆☆☆

President.....	Nancy Norlund.....	714/960-6957
1st Vice President.....	Roger Ewing.....	714/525-1826
2nd Vice President.....	Robert Burson.....	562/860-5938
Secretary.....	Sharon Burson.....	562/860-5938
Treasurer.....	Beth Pelfrey.....	714/774-2754
Director.....	Betty Nelson.....	714/530-1365
Federation Delegate.....	James Perlowin.....	949/837-7213

### ☆☆☆ Committee Chairpersons ☆☆☆

Anaheim Arts Council.....	Margaret Neeley.....	714/535-2030
Arts Council Alternative.....	<b>OPEN</b>	
Badges.....	Marge Jordan.....	714/897-2407
Editor.....	Joan Macomber.....	714/821-0129
Coeditor and Mailing.....	Darren Hansen.....	714/821-0129
Greeter.....	Larry Richey.....	714/846-3573
Historian.....	Jan Gillette.....	714/776-9467
Hospitality.....	Lana Brown.....	714/870-4859
Library.....	<b>OPEN</b>	
Membership.....	Milly Arvanites.....	714/838-1924
Monthly Drawing.....	Jerry Norlund.....	714/960-6957
Phone Committee.....	<b>OPEN</b>	
2001 Show Chairperson.....	Cat Van Kampen.....	714/993-2827
2001 Co-Show Chairperson.....	Beth Pelfrey.....	714/774-2754
Silent Auction.....	<b>OPEN</b>	
Sunshine.....	Dottie Johnson.....	714/535-8579
Veterans Coordinator.....	John Velasquez.....	310/835-4432
Ways & Means Chairman.....	<b>OPEN</b>	
Workshop Coordinator.....	Herb Beckman.....	714/778-1496
Youth Chairman.....	Norbert Bernhardt..	714/734-9665

## Shows

**March 3-4; Arcadia, CA**  
42nd annual show; Monrovia Rock-hounds Inc.

The Arboretum, Ayers Hall, 301 N. Baldwin Ave.

Sat. 9-4:30, Sun. 9-4:30; 12 dealers offering jewelry, rough material, cut stones, specimens, lapidary equipment, supplies and wire-wrap jewelry; club features include a 560-pound rainbow-sheen obsidian boulder, treasure wheel, grab bags, dinosaur dig, geode cracking and displays

Contact Kris McFarland, (626) 337-8596.

### **March 3-17; Laughlin, NV**

Avi Resort First Annual Gem, RV, Swap Meet Show.  
800/430-0721, x5535 or 800/AVI-2-WIN; www.avicasino.com

### **March 11-12; Turlock, CA**

Rock of Ages; Club Retail Show - 100 Exhibits, Dealers, Door Prizes, Fluorescent Display, Crafts, Opals and Crystals, Silent Auction, The Best Snack Bar, Admission \$2.00, Under 18 t.

Location: County Fairway  
grouped by day  
Hours: 10 AM to 5 PM & Sun.

Mineral Society  
Magie, 2600  
o, CA; 209-

522-8231 Days, 209-571-3185 Eves,  
Fax 209-522-8381

### **March 24-25; Torrance, CA**

52nd annual show, "Nature's Treasures"; South Bay Lapidary & Mineral Soc.

Torrance Recreation Center, 3341 Torrance Blvd.

Sat. 10-6, Sun. 10-5; free admission.  
Contact Doris Turney, (310) 322-2556; Web site: www.palosverdes.com/sblap/.

### **April 8; Escondido, CA**

Gem & Mineral Craft Show; Club Retail Show - A small show with elite lapidary crafts for sale. Includes jewelry, mineral slabs, polished rocks, etc. Free Admission & parking.

Location: Redwood Senior Center, 13th Avenue & Redwood Street

Hours: Sat. 10 AM to 4 PM; Promoter: Palomar Gem & Mineral Club  
Contact: Bonnie Parsley, 3267 Ryan Drive, Escondido, CA 92025; 760-745-4188, Fax 760-745-0537.



## Shows

**February 16 - 25, 2001 Indio, CA**  
San Geronio Gem & Mineral Society  
Riverside County Fair & National Date Festival, Gem & Mineral Building  
46-350 Arabia Street  
Hours: 10-10 daily  
Don Grisham (909) 845-9361 or  
Bert Grisham (909) 849-1674.

**February 24 - 25, 2001 San Jose, CA**  
Santa Clara Valley Gem and Mineral Society, Santa Clara Fairgrounds  
334 Tully Road  
Hours: Sat 10-6, Sun 10-5  
Bill Gissler (408) 241-0477  
• Web site: <http://www.slip.net.com/~ccox/svgms/>

• **February 24 - 25, 2001 North Hollywood, CA**  
San Fernando Valley Gem Fair, Del Air Rockhounds, Sierra Paloma Club, and Woodland Hills Rock Chippers :  
Valley Plaza Recreation Center  
12240 Archwood Street  
Hours: 10-5 both days  
Julie & Ocar Marin (818) 886-7190  
E-mail [ohmarin@flash.net](mailto:ohmarin@flash.net)

**February 17 - 18, Apache Junction, AZ**  
36th annual show, "Symphony in Stone"; Apache Junction Rock & Gem Club  
Apache Junction High School Cafetorium, Ironwood and Southern

Sat. 10-5, Sun. 10-4; admission \$2.50, students \$1, kids under 12 free; demonstrations, showcases, hourly prizes, raffles.  
Contact Irvin Swanson  
600 S. Idaho Rd. #345  
Apache Junction, AZ 85219-5250,  
(480) 983-9050;  
e-mail: [iswanson@worldnet.att.net](mailto:iswanson@worldnet.att.net).

**February 24-25; San Jose, CA**  
46th annual show, "2001 A Gem Odyssey"; Santa Clara Valley Gem & Mineral Society  
Santa Clara County Fairgrounds  
334 Tully Rd.  
Sat. 10-6, Sun. 10-5; admission \$6, kids under 12 free with adult; gems, jewelry, minerals, fossils, dealers, demonstrations, exhibits.  
Contact Bill Gissler  
1075 Blossom Dr.  
Santa Clara, CA 95050  
(408) 241-0477.

**March 2-4; Hayward, CA**  
Show, "2001: A Rock Odyssey"; The Gem & Mineral Society of Castro Valley  
Centennial Hall  
22292 Foothill Blvd.; Fri. 10-6, Sat. 10-6, Sun. 10-5; admission \$5, children under 13 free with adult; gems, minerals, fossils, rocks, jewelry, beads, lapidary equipment and jewelry making supplies; live auction, door prizes, cafeteria, demonstrations, exhibitor cases; call (510) 547-5906 or (510) 889-7808.

## General Information

### General Meetings

Held the second Tuesday of each month, January through November at 7:00 PM. Visitors are always welcome.

### Board Meetings

Held the third Thursday of each month, January through December at 7:00 PM. Members are always welcome.

### Workshop

Open every Thursday 7:00 PM to 10:00 PM, and every Saturday 4:00 PM to 7:00 PM (until 10:00 PM if staffed).

**Please note:** exceptions to usual workshop hours are located on the bulletin calendar.

### Meetings and workshops are held at:

Anaheim Downtown Community Center  
250 East Center Street  
Anaheim, CA

### Address inquiries to:

Searchers Gem and Mineral Society, Inc.  
P.O. Box 3492  
Anaheim, CA 92803

### Newsbulletin

Articles are due at the end of each month and distributed at the following meeting. Late articles will be accommodated when possible.  
Submit articles via e-mail to: [Searchersnews@hotmail.com](mailto:Searchersnews@hotmail.com), or call to FAX to 714/821-0129.

### Magazine Subscriptions

*Rock and Gem* magazine and *Lapidary Journal* subscriptions are available to members at a discount, and proceeds go to the Club. Please contact Dottie Johnson at 714/535-8579.

## Calendar of Events

### February

- 12 Anza Borrego/Canyon Sin Nombre Orientation 7-10 PM, NOCCC  
Cat Van Kampen; 714/993-2827; cconniecat@aol.com
- 16-19 Anza Borrego/Canyon Sin Nombre Class Fee Trip  
Cat Van Kampen; 714/993-2827; cconniecat@aol.com
- 17-19 **South Cady Mountains Field Trip for chalcedony, agates, jaspers, and jasp-agate. See write-up Page 24**  
**Robert Burson; 562/860-5938; dancing.rocks@gte.net**
- 17 Lavic Siding **Field Trip**; Culver City Club for jasper and agate  
Claudia Rae; SHERMPROD@aol.com

### March

- 3 Himalayan Mine Fee for Dig **Field Trip** for Tourmaline  
Simon King; 619/444-3731; simonking1@msn.com
- 3-17 Avi Resort First Annual Gem, RV, Swap Meet Show  
800/430-0721, x5535 or 800/AVI-2-WIN; www.avicasino.com
- 5 China Ranch/Sperry Wash Orientation; 7 PM to 10 PM  
Cat Van Kampen; 714/993-2827; cconniecat@aol.com
- 10-11 China Ranch/Sperry Wash Class Fee **Field Trip** for Petrified Palm  
Cat Van Kampen; 714/993-2827; cconniecat@aol.com
- 16-18 **Stoddard Wells Victorville Club Show and Field Trips for Actinolite, Marble, Black Jade with Magnetite. Please RSVP to Norbert Bernhardt by MARCH 13, 2001. Call 714-801-2181 or leave a message at 714-734-9665 or cell phone 714/801-2181; see write-up Page 25 and map on Page 24. Additional questions to Nick Beall of the Victorville Club; GBeall5084@aol.com**
- 17 Showmanship, Judging and Clerking Seminar; Sparks, NV  
see write-up
- 24-25 **Ridgecrest--Tentative--for dendritic moss agate and brecciated material. See 2nd VP write-up Page 8.**  
**Robert Burson; 562/860-5938; dancing.rocks@gte.net**
- 27-28 Boron Club Show and Mine **Field Trips** for Borates  
David Eyre; 760/762-6575

## Be A Searchers' Show Volunteer

*By Cat Van Kampen*

During the months of March and April we'll be asking for volunteers to help in the upcoming Searcher's Show in May. We'll have sign-up sheets available at the General Meetings. If you're unable to attend, but you'd like to participate, please call any of the committee chairpersons that you'd like to help or Cat Van Kampen, Show Chairperson, at 714/993-2827 e-mail Cconniecat@aol.com

Remember, we need donations for the Wheel of Fortune, hourly door prizes, rocks, minerals, or fossils for the silent auction, and etc. Thanks, everyone!

## Show Cases

*By Walter Mroch*

Members entering cases in the show need to let me know. Also, it's time to sign up with me if you want to borrow a club case for the show. I have plans available if you want to build your own show case. Only three of us have committed to the new case design so I am not sure if we will proceed with the full blown plan.

## Wanted

Awards and Ribbons Show Committee Volunteer Needed.  
Please call Cat Van Kampen To Volunteer.

## Calling All Crafters

*By Lynn Selden*

Please contribute to our craft corner. Make just one craft per week! Suggestions: homemade jams or jellies, fudge, soup in a jar, crocheted items, boutique items, pet rocks, napkins rings, paperweights, potted plants, etc. Please contact me at home (714) 826-4291, or sign-up at the General Meetings. Thank you for your assistance and talent.

Show Committee Meetings Are The **1st Tuesday** Of The Month:

*March 6, April 3 & May 1, 2001*

Show Dates Are : **May 5 & 6, 2001**

## Show Committee

By Cat Van Kampen

Our next Show Committee Meeting is on March 6th, Tuesday, at 7:00 PM, at the Anaheim Senior Citizen's Center. Committee Chairpersons should try to attend this meeting; club mem-

bers are welcome to join us. Come on down and join us at the Community Center at 250 Center Street, Anaheim, CA. Thanks!

## Show Case Security

By Larry Richey

Please remember that we do not allow any display case or exhibit to be opened or removed during show hours. Sunday at the close of the show everyone will leave the exhibit hall until security has cleared the building. This should take 5 to 10 minutes with your help. Then you will be allowed

back into the exhibit hall to remove your case, or open it to remove your things. If you need help or have a problem, please let myself or Connie Van Kampen, Show Chairperson, know. This is for your safety and protection. Thank you.

## Show Security Name Badges

By Larry Richey

Remember to wear your club name badge to the show this year. Sunday when the show closes everyone will be required to leave the show exhibit room to insure only those involved in the show breakdown activities will be allowed back into the exhibit room; this should take 5 to 10 minutes with your help. After the room has been cleared of all unauthorized people and leftover guests from the show, you will be allowed back in if your are wearing

your Searchers name badge.

Anyone in need of help with their display and receiving assistance from someone other than a club member, or any non-club members picking up exhibits at the close of the show Sunday—**need a special badge**. Please see me Friday during set-up, Saturday during the show, or early Sunday so I insure they have a badge or proper pass before the close of the show. Thank you.

## Calendar of Events (Continued)

### April

- 7-8 Boron Club Show and Mine **Field Trips** for Borates  
David Eyre; 760/762-6575
- 12-15 **Wiley's Well area, Chuckwalla Springs and Cargo Machacho--tentative--for kyanite, dumortierite, calcite, (ice spar) amygdules and quartz nodules. See 2nd VP write-up Page 8.**  
Robert Burson; 562/860-5938; dancing.ocks@gte.net
- 21 Arts Council Soiree, TBA

### June

- 22-24 CFMS 2001 Show at Paso Robles; see write-up Page 29.

### July

- 6-8 Davis Creek CFMS **Field Trip** North for Obsidian; see write-up Page 27 by Dick Pankey; DickPankey@juno.com
- 13-15 Glass Butte CFMS **Field Trip** North for Obsidian; see write-up Page 28 by Dick Pankey; DickPankey@juno.com

### October

- 13-14 Searles Lake Trona Club Show and **Field Trips** for Halite and Evaporates.  
Jim Fairchild; fairchil@iwwisp.com

## Shop Talk

**The Lapidary Workshop** is open every Thursday 7:00 PM to 10:00 PM, and every Saturday 4:00 PM to 7:00 PM (until 10:00 PM if staffed). Exceptions to usual workshop hours are located on the bulletin calendar.

**Wire-wrapping classes** are held every Saturday through the talent and generosity of instructors Jeri Parkerson and Ben Byland. You'll need a few reasonable tools and material can be obtained in the workshop.

**Come expand your hobby, enjoy the friendships, and join the fun!**

## President's Report

By Nancy Norlund

It was great to see some of our past members show up at Quartzsite and my Indiana visitors enjoyed the experience of shopping 'till you dropped. We journeyed over to Coon Hollow Campground and also had a great three-day field trip with our other club members and visiting Rockhounds. There was a little misunderstanding on sharing a ride with someone when we went out to dig. If you ride in someone's vehicle, you should respect their wishes on when to leave the digging. The driver has volunteered room in his vehicle so you will be able to attend the digging. I think everyone had a great time even though there was a little cool rain and sunshine. I'm looking forward to seeing more of you in the desert at

our February 17th through 19th Cady Mountain field trip.

I have been trying to fill the vacancies for this year's committees. Would you be willing to volunteer to head up our HOSPITALITY, PHONE COMMITTEE, SILENT AUCTION, SUBSCRIPTIONS, or WAYS AND MEANS? What better way to learn more about your club than to volunteer for one of these positions. They are not complicated positions and give you a great opportunity to get to know club members better. There are no board meetings to attend with these position. Feel free to call me for more instructions as to the duties of these positions at 714/960-6957.

## Treasurer's Report

By Beth Pelfrey

Having not received the audited and final books for 2000 at time of writing, there is not an actual balance report as yet, but rather a summary of

the revenue and disbursements based on an estimate beginning balance pending reconciliation.

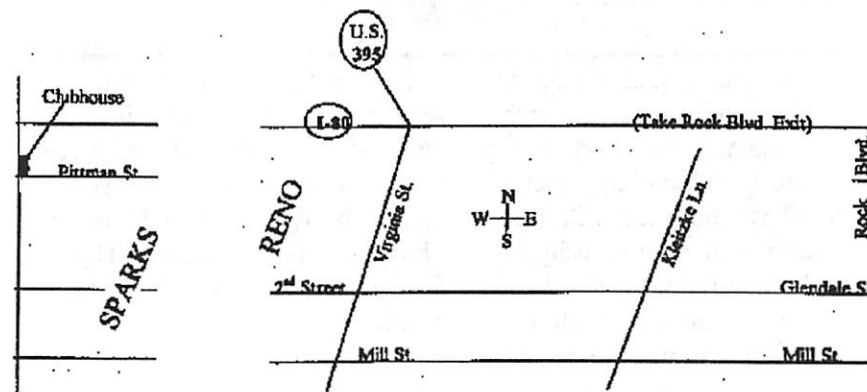
Description	Received	Disbursed	Balance
Beginning Balance, estimated 1/1/01			\$2,086.97
Dues	\$370.00		
Lapidary Journal Subs	\$227.75		
Checks Issues		\$804.88	
Holiday Dinner	\$99.90		
Ending Balance, estimated 1/9/01	\$697.65	\$804.88	\$1,979.74

## Showmanship, Judging, and Clerking Seminar (Continued)

Norvie Enns

### EXHIBITORS' WORKSHOP

WHEN: March 17, 2001  
HOST: Reno Gem & Mineral Society  
WHERE: Society Clubhouse, 480 South Rock Blvd., Sparks, Nevada



Doughnuts,

REGISTRATION: 8:00 a.m. till 8:45 a.m. - Meeting begins at 9:00 a.m. (\$3.50 Registration fee per person, which covers Coffee, and Lunch at the Clubhouse.

RESERVATIONS: Mail to: Norvie Enns  
1485 W. 4th St., #10  
Reno, NV 89503

✂ \_\_\_\_\_

(Fill in and return with registration check.)

Name(s) \_\_\_\_\_

Address \_\_\_\_\_

Phone # \_\_\_\_\_ Society \_\_\_\_\_

Number attending: \_\_\_\_\_ Current Office held (if any) \_\_\_\_\_

Please mail by: March 1, 2001

Make Checks payable to:  
Reno Gem & Mineral Society



## Showmanship, Judging, and Clerking Seminar, Sparks NV

Norvie Enns

**March 17, 2001**

Feel like you can't enter your display in competition because you don't know enough about the rules and how to set up your case?

Last month Norvie Enns, Chairman of the Rules Committee, announced a seminar that would be of great benefit to those wanting to learn more about

entering competition. The registration form to the right of this article was included in the January issue of the CFMS Newsletter, along with a map of the area and location of the seminar.

**Deadline for registration-March 1.**

You can also find a form on the CFMS Web site also, in the new Forms Center at [www.cfmsinc.org](http://www.cfmsinc.org)

## AFMS/SCFMS Convention

**44<sup>th</sup> Annual Show**  
**"2001 - A Gem Odyssey"**

**Arlington Convention Center**  
**1200 Ballpark Way**  
**Arlington, TX**

**June 14, 15, 16, 17, 2001**

Thursday - Saturday 10:00 AM - 6:00 PM  
Sunday 10:00 AM - 5:00 PM

Adults \$4  
Children 6-12 \$1

**Sponsored by:**

**Arlington Gem and Mineral Club**  
Bill Wilson, Show Chairman, (817) 483-1555  
Harold Hoskison, Dealer Chairman, (817-295-4198)  
Joyce and Delbert Speed, AFMS Coordinators  
or e-mail [gemclub@ev1.net](mailto:gemclub@ev1.net).



## First Vice-President's Report

By Roger Ewing

If you missed the January meeting, you missed one super program, 'Gems and Minerals of Afghanistan' by Dr. Bonita Chamberlain. She was charming, witty, interesting and very knowledgeable. This is one program I would recommend for any club. Thank you Dr. Chamberlain!

**LOST--one slide projector.** We are not aware of what happened to our slide projector after we moved. Hopefully, someone is storing it! Please give me a call if you have any information.

Program for March. Some members have asked me to contact Allen Silverstein, of Allen's Rocks and Minerals, about doing another program on florescent materials for us. He's very interesting to talk to, has been a club member for a long time, and we know this program promises to be very edu-

cational. His shop is in La Habra. Members will remember how enjoyable his program was last time he came. This is a program NOT to miss!

Some upcoming programs are the June Silent Auction, the July Pot Luck, and a Searchers' Tailgate! Hopefully we'll have commitments on April and May soon.

**Christmas Party Up-date.** Members have expressed a desire to change our location for next year. A lot of people have been exploring possibilities. Costs of dinners at Christmas have gone up--especially on Saturday nights. Start saving now! \$5 a month and you'll have some extra. We're really hoping to see everyone there! Many members are becoming involved and it promises to be a wonderful evening. Give me your input.

## 2001 Membership Dues Are Due

**Dues and address updates must be submitted by**  
**March 1, 2001 to be included in the Searchers Roster**

*Annually: \$20 for adults, \$25 per couple,*

*\$2 for junior members under 17-years of age.*

*Give your dues directly to Milly at the January or February Meetings or mail to:*  
*Milly Arvanites*  
*5200 Irvine Boulevard, Space 388*  
*Irvine, CA 92620-2061*

## Second Vice-President's Report

By Robert Burson

Here's what's up for fieldtrips! As stated in last month's bulletin, February's trip is to the South Cadys and can be found republished in this bulletin's field trip section.

Tentative March Field Trip, 24th and 25th at Ridgecrest. Saturday, March 24th we will meet at the Texaco gas station in Inyokern on Hwy 178 at 9:00 AM. From there we will leave to Rainbow Ridge. The material is usually black to brown brecciated with reds, oranges, and yellows. It is somewhat unusual, but quite striking. Suggested donation is a few dollars to cover costs required to maintain the claim and make improvements. The claim is held by Indian Wells Rock and Gem.

Sunday, March 25th to Sheep Springs. We will meet at 9:00 AM in the same Texaco market location. Sheep Springs is a beautiful scenic location. The prize material is a white with blue/black dendritic moss agate.

Lodging can be obtained in Ridgecrest. Two suggestions are Econo Lodge at 760/446-2551 and Budget Inn at 760/375-1351. The Econo Lodge runs about \$45.00 with continental breakfast included and Budget Inn is about \$30.00. Please mention to both that you are a member of the Searchers for a possible discount. The Budget Inn has a restaurant on

location with reasonable food.

Camping will be tentatively at Quarry before Sheep Springs, which is south from Hwy. 178 at the junction where the Inyokern Texaco is. Travel 2.7 miles south, turn right on paved road traveling 4.6 miles and look for the Searchers sign near Quarry.

Also, as an option, we may have a possible side trip on Sunday evening to the Red Rock Canyon area to Jasper Hill, which may be excluded from the protected wilderness area making it available for collecting. This material comes in shades of reds, oranges, yellows and sometimes purple. It resembles Arizona petrified wood. More exploration into the status of this area shall be conducted.

Currently we are trying to plan the April field trip, which maybe April 12 through 15, to the Wiley's Well area, Chuckwalla Springs and Cargo Machacho. The material will consist of kyanite, dumortierite, calcite, (ice spar) amygdules and Quartz nodules. Watch for more details in the March edition of *The Rock Slab News*.

### Reminder

The Arts Council Soiree will be  
April 21, 2001.

You will be hearing more about our  
club activity regarding this event.

## Stone Canyon Jasper Exhibit At CFMS 2001 Show, Paso Robles

By Bea and Sherm Griselle, Santa Lucia Rockhounds

June 22 to 24, 2001

Members of the Santa Lucia Rockhounds have assembled a display of Stone Canyon Jasper to be exhibited at the CFMS 2001 Show. The jasper was collected during a CFMS Field Trip to Stone Canyon on May 13, 2000. Photographs of the field trip are a part of the exhibit.

Stone Canyon jasper is brecciated rock consisting of sharp fragments imbedded in a fine-grained matrix. Mustard or golden yellow are the most prominent colors, but many exceptional pieces contain chalcedony webbing of beautiful blue, purple, green, red and black coloration. This combination of brecciated jasper cemented with colorful chalcedony

gives Stone Canyon jasper its rare and distinctive appearance.

The site is ten miles north of Parkfield, California. In-place deposits of jasper, such as found at the Stone Canyon site, are infrequent. The deposit has been known since 1892 and contains brecciated jasper in a wide vein.

Steve Ivie, CFMS Field Trip Chair-South, is doing his best to arrange another Stone Canyon field trip during the CFMS Show in June. Stone Canyon jasper is one of California's unique rocks and is a collector's ideal for Rockhounds. This is your chance to learn more about this beautiful jasper by attending the CFMS 2001 Show at Paso Robles, June 22-24.

California Federation of Mineralogical Societies  
62<sup>nd</sup> Annual Show and Convention

### GEM, JEWELRY & MINERAL SHOW

June 22, 23, 24, 2001  
Fri. & Sat. 10-6, Sun. 10-5

**CALIFORNIA MID-STATE FAIR**  
2198 Riverside Avenue  
Paso Robles, California

\*Gems\*Jewelry\*Minerals\*Fossils\*Rocks\*  
\*Petrified Wood\*Youth Activities\*Games\*  
\*SharksTeeth\*150 Exhibits\*50 Dealers\*  
\*Lectures\*Demonstrations\*Food & Beverage\*  
\*Campground\*Raffle\*Much More

ADMISSION: \$4.00 ADULTS-\$3.00 UNDER 18 & OVER 55-FREE UNDER 12 AND SCOUTS IN UNIFORM.

HOSTED BY THE SANTA LUCIA ROCKHOUNDS. CO-CHAIR BEA AND SHERM GRISELLE,  
1401 NIDERER ROAD, PASO ROBLES, CA (805) 238-4366 E-mail thegriselles@comcast.net



## CFMS Field Trip To Glass Butte July 13 - 15, 2001

*Hosted by CFMS Field Trip Chairman - North*

This is the second stop of our **OB-SIDIAN BONANZA** field trip. Located in central Oregon Glass Butte is only 200 miles from Davis Creek, our first stop. Glass Butte is Oregon's premier obsidian site. With the exception of the Davis Creek, no other area can match the variety that is available here. Within a small radius you can find gold sheen, silver sheen, mahogany, red, flame, lace, double flow, brown, green and rainbow obsidian.

**Directions:** Take US Route 395 north out of Lakeview, OR. 120 miles to US Route 20 at Riley. Turn left on to US 20, west. Go 28 miles and turn left 0.1 miles west of Milepost 77 onto Obsidian Road where you should see the first orange paper plate with arrows that direct you to camp. Follow this road and the orange paper plates 3 miles to camp.

**Facilities:** There are no established campgrounds at Glass Butte, but there are many good places to 'dry camp'. There is no problem getting any size rigs and passenger cars to the campsite, which is in walking distance to several collecting sites. Gas is available at Riley and in Hampton about 15 miles west.

**Collecting Trips:** The organized collecting trips will start on Friday morning. All trips will leave at 8:30 AM, SHARP, from the campgrounds.

Assemble at 8:15 AM for details and instructions for each day's trip. We will be collecting at 6 major sites: Rainbow, Midnight Lace, Mahogany/Red, Flame, Mahogany Gold Sheen and Green/Silver Sheen. You have to dig for the biggest and the best, but there is a lot of good obsidian to be found as float and in the discards from previous diggers. Collecting sites are all within 3 mile of camp.

Thursday-July 12: Arrive at camp  
Friday-July 13: Daily collecting trips  
Saturday-July 14: Daily collecting  
Sunday-July 15: Daily collecting  
Monday-July 16: Depart for home

Plan on several potluck dinners and daily happy hours. Bring firewood for evening campfires. We plan on having a good time and collecting some great obsidian. Come join us for a great rockhound time of collecting, fun and fellowship.

**Safety Note:** Obsidian is Mother Nature's glass and like glass it shatters and is extremely sharp. Goggles or safety glasses, long sleeve shirts and gloves are strongly recommended.

Please notify me by 7/2/01 if you plan to attend, call if you have questions or need more information:

Dick Pankey; 4310 Kingsly Drive  
Pittsburg, CA 94565  
Phone: (925) 439-7509

## Membership Report

*By Milly Arvanites*

We started off the New Year with a nice crowd of members and guests at our January 9, 2001 meeting. It was a good start money-wise in dues. We took in a nice bit of money. Nearly everyone there paid their dues for which I surely thank you. If I could get everyone to pay early, I could start on the new Roster for the year. Don't forget, I have a deadline date of March 1st to give me time to type up, print and put together a new Membership Roster for 2001. I will be handing out the new Roster at the March 13th meeting.

**Please don't forget, if anyone has any errors in their names, addresses, phone numbers, e-mail, etc., please let me know by March 1, 2001.** We want the new Rosters to be correct for everyone.

Before the meeting last night I had 38

paid-up members so far for the year. At the end of the meeting I had 94 members so far for 2001. That's a good number for an early start. We ended up with 212 members for 2000. Got a way to go yet.

We had one new member join at the January 9th meeting: Jimmy Peterson. Jimmy is a retired Chemist and he mentioned to me he would like to help out on 'Field Trips'. Where have you been all our lives? I could not get him over for an introduction with our Robert Burson fast enough.

Thanks to all who paid their dues. I almost got everyone there. If you can't attend a meeting for whatever reason, please mail your dues directly to me! I will get your receipt and membership card out in the mail to you ASAP. Thanks!!!

## Welcome New Searchers!

Don, Lynette and David Haehlke  
10071 Constitution  
Huntington Beach, CA 92646  
714/968-3609

Charles Thompson  
409 South Philadelphia Street  
Anaheim, CA 92805

Jimmy Peterson  
18611 Silver Maple Way  
Santa Ana, CA 92705-2144  
712/633-7573  
E-mail: [jimmypeterson@msn.com](mailto:jimmypeterson@msn.com)



# General Meeting Minutes

By Sharon Burson

## Condensed and unapproved General Meeting Minutes January 9, 2001

Nancy Norlund called the meeting to order at 7:10 PM welcoming members and 5 visitors.

Roger Ewing introduced our guest speaker, Dr. Bonita Chamberlain who presented an informative and delightful overview on mining gems in Afghanistan and provided some lovely stones and jewelry for our viewing.

Nancy Norlund presented CFMS pins and bars to the outgoing Y2K Club Officers.

The reading of the November, 2000 Minutes was voted to be bypassed due to time restrictions.

Beth Pelfrey presented the Treasurers Report which is included in this newsbulletin. Beth stated original receipts must be submitted for any and all reimbursements.

Floyd Neeley won the Door Prize. Nancy mentioned that the chance donation ticket money goes back into the Workshop, so please keep buying those tickets.

Walter Mroch called Floyd Neeley and Milt Green to the front of the room so that we could sing Happy Birthday to the two of them.

Walter stated we have two new cases for the 2001 Show, designed and built by Bud Henderson and Milt Green. Walter hopes to have about 30 more cases and contributions for the building material from Home Depot and others. If anyone is available to help build these cases please contact Walter.

Joan Macomber stated the newly formatted *The Rock Slab News* would be distributed at the General Meetings effective immediately to save on mailing costs.

Richard Butler reminded us that anything we want published in *The Rock Slab News* should be submitted to Joan Macomber.

Joan Macomber reiterated the January Field Trip will be to Quartzsite and Hauser Beds January 26 – 28.

Robert Burson announced the February Field Trip will be to the South end of the Cady Mountains February 17 – 19. He had some samples of the available material on the back table. If you plan to camp the Dry Camp is at the Hector Road exit and motel reservations can be made at the Ludlow Motel in Ludlow.

Federation Delegate, James Perlowin was not present; however, Nancy stated there would be no meeting this month.

## CFMS Field Trip To Davis Creek/Lassen Creek (Continued)

July 6 - 8, 2001

(Continued from previous page)  
Approximately 22 miles from Alturas is the small town of Davis Creek (stop here to visit the Davis Creek Mercantile, a very interesting little store). Continue another 11 miles to South Willow Ranch Rd. where you should see the first orange paper plate with arrows that direct you to camp. Turn right and follow this road and the orange paper plates 5.5 miles. Turn right and cross the small bridge. After you cross the bridge you will see the Lassen Creek Campgrounds on your left, turn left into the campground.

**Facilities:** The campground is a large meadow with some large pine trees and two small streams. This is a 'dry camping' area with one very nice pit toilet. It can accommodate all sizes of motorhomes and trailers and is also very good for tenters. At Davis Creek there is gas and some groceries, and a great place to get ice cream on a hot afternoon. At Alturas there is gas, food, motels and medical facilities.

**Collecting Trips:** The organized collecting trips will start on Friday morning. All trips will leave at 8:30 AM, SHARP, from the campgrounds. Assemble at 8:15 AM for details and instructions for each day's trip. We will be collecting at 5 major sites: Rainbow, Electric Blue, Pink Lady, Needles, and Mahogany Gold Sheen. You have to dig for the biggest and

the best, but there is a lot of good obsidian to be found as float and in the discards from previous diggers. Because of the expected size of the group and limited parking at the collecting sites, we will divide up into small groups, each going to a different site. Everyone will get to go to every site.

Thursday-July 5: Arrive at camp  
Friday-July 6: Daily collecting trips  
Saturday-July 7: Daily collecting  
Sunday-July 8: Daily collecting  
Monday-July 9: Depart to Lakeview, OR

Plan on several potluck dinners and daily happy hours. Bring firewood for evening campfires. We plan on having a good time and collecting some great obsidian. Come join us for a great rockhound time of collecting, fun and fellowship.

**Safety Note:** Obsidian is Mother Nature's glass and like glass it shatters and is extremely sharp. Goggles or safety glasses, long sleeve shirts and gloves are strongly recommended.

Please notify me by 7/2/01 if you plan to attend, call if you have questions or need more information:

Dick Pankey; Phone (925) 439-7509;  
E-mail: dickpankey@juno.com  
4310 Kingsly Dr.  
Pittsburg, CA 94565



## CFMS – We Are Going To Have An Obsidian Bonanza

*By Richard Pankey, Field Trip Chair - North*

Two premier obsidian-collecting areas are within a one-day drive of each other and I will lead a field trip to them next July! The first is the Davis Creek/Lassen Creek area in the far northeast corner of California. The other is Glass Butte in south central Oregon. Both areas have an abundance of many types of premium cutting and polishing material. Many colors and types of obsidian can be found: rainbow, silver sheen, royal purple, gold sheen, pink, electric blue, green sheen, and mahogany gold sheen. There is double flow mahogany, red, midnight lace, flame and iris. And to me the most interesting is the needle obsidian. Although obsidian can be found in many areas, the material at these locations is probably the highest quality and the greatest variety to be found anywhere. Two great collecting areas. Two great rockhound weekends. And less than 200 miles apart.

### CFMS Field Trip To Davis Creek/Lassen Creek July 6 - 8, 2001

*Hosted by CFMS Field Trip Chairman - North*

This is the first stop of our **OBSIDIAN BONANZA** to Davis Creek/Lassen Creek and to Glass Butte. Davis Creek is the premier California obsidian collecting area with an abundance of a great variety of beautiful obsidian. This area is located on Buck Mt. in the heart of the Modoc National Forest. The altitude ranges

It is never too early to start making plans to go on a field trip. Mark your calendar now for the first weekend in **July (the 6th through the 8th)** for **Davis Creek/Lassen Creek** and the second weekend **(the 13th through the 15th)** at **Glass Butte**. Join us for just one weekend or join us for both. I know this is a long trip for people from southern California; it is a long trip for us in northern California, but it will be worth it. I am planning other collecting stops during the intervening week as we travel from Davis Creek to Glass Butte. Details and trip fliers are available in the February issue of the CFMS Newsletter.

This is the CFMS Field Trips-North field trip for 2001. All members and guests are invited. Please notify me if you are planning to attend. Come join us for this Obsidian Bonanza, July 2001!

from 5000 to 7000 feet. A free permit is required for collecting which will be available at camp.

**Directions:** Take your favorite route to Alturas, CA in the far northeast corner of California. From Alturas, go north on US Route 395. *(Continued on next page)*

## General Meeting Minutes (Continued)

*By Sharon Burson*

Connie Van Kampen presented Betty Nelson with a nice photo and thanked her for her dedication and service over the last two years.

Connie reported on the 2001 Show as follows: most positions filled for the 2001 Show; no dealers in back room; Lynn Selden has a list circulating for Arts & Crafts donations; Beth Pelfrey sent out contracts to the dealers; new Dealer participating in show from Barstow; next show meeting February 6, 2001

Jerry Norlund mentioned there were copies of the 2001 Show donation letters on the back table for distribution.

Floyd Neeley requested that if you want a demonstration at the show please contact him.

Nancy needs to fill the following positions and ask if you are interested please contact her: Librarian; Anaheim Arts Council Alternate; Hospitality; Phone Committee; Silent Auction; Subscriptions.

Youth Report: no Field Trip this month, but the kids can learn how to make cabs in the workshop this Saturday.

Meeting adjourned at 9:06 PM.

## Bixbyite and Bixbyite/Topaz Premiered at MSSC

*By Walter Mroch*

On January 20th, 20001 GAMECO and UMFI premiered the best and largest world class bixbyite and bixbyite/pink topaz specimens mined in the Year 2000 from our Solar Wind Claims in the Thomas Range of Utah at the Mineralogical Society of Southern California 2001 Banquet. We were invited to speak after the business meeting was concluded. Gazing out into the audience was like looking at a Who's Who in the local mineral community. We had members from 18 to 97 in attendance and a whole bunch of well recognized dealers including Al Ordway, Casey Jones, Bill Larsen, Tom Griffiths, Wayne Leicht, Rock Currier and

more. Several awards were given for the 2000 Competition at the annual MSSC Show including one that went to Bill Larsen Jr. for the Junior Case. In all there were probably about 70 people there including one special gentleman introduced by Cathy Casey. She apparently has a mineral class for the blind which has met with much success and is in collaboration with the Braille Institute. Overall it was a very enjoyable evening for all involved.

To see some of the specimens go to <http://www.gemandmineral.com> and click on the MSSC link. <http://www.gemandmineral.com>

## Searchers Jargon

*By Walter Mroch*

In an effort to get new Searchers Gem and Mineral Society members up to speed with some of the terms they might hear at meetings or other functions we have compiled the following list for your convenience. Please familiarize yourself with these terms and feel free to ask questions if you have any.

**Member** - anyone that pays their annual dues whether family, individual or children.

**Junior Member** - any club member that is under 18 years of age.

**Youth Chairman** - an adult member who arranges and conducts field trips and events for the Junior Members of the club; parents of the Junior Members are encouraged to help.

**Club Bulletin** - the primary means of communicating important information to the club membership about generally all club activities.

**Bylaws** - the general operating document for the club's charter; each member should have a copy. If you don't please request a copy from the membership chairperson.

**Standing Rules** - more detailed document indicating what each officer should be taking charge of in his/her position; also includes functions for other non-elected, i.e. appointed pseudo officers to conduct club business; each member should have a copy. If you don't please request a copy from the membership chairperson.

**Telephone Committee** - an ad hoc group of members that call members to notify them about some important event that is of such short notice that it cannot wait for the bulletin such as the passing of a member, a special field trip, etc.

**Board Meeting** - a meeting where the elected club officials get together once per month to handle the business of the club whether new or old; all members are welcome to see what goes on at the meetings; usually the 3rd Thursday of each month.

**Club Meeting** - the main event where club members gather locally to see a program, a drawing for prizes, to keep up to date on club activities and other rockhound related issues; usually held the 2nd Tuesday of each month.

**Club Waiver** - a document which absolves the club of any careless actions that may be taken by members for which the club assumes no liability; the club carries an insurance policy through the CFMS for this purpose.

**Workshop** - the club lapidary workshop which is open several times per month for members to utilize for a small fee to help cover the cost of maintaining shop equipment; there is a host of lapidary equipment including: saws, cabochon machines, etc. to assist in learning how to work with rock to create things for yourself; hosted by a coordinator (member).

## Stoddard Wells Tailgate and Field Trip

*By Norbert Bernhardt*

**March 16th, 17th and 18th, 2001**

### **The Rock 'n' Kids Corner**

Hello Kids and Members!

Victor Valley Gem and Mineral Club Presents:

Stoddard Wells Tailgate & Field Trip, March 16th, 17th and 18th, 2001

Come join us on a trip to Apple Valley, CA on this weekend. This area is off Stoddard Wells Road near Victorville. The tailgate is a place where people can buy or sell just about anything. Most items for sale are related to gems, minerals, findings and equipment. Great deals!

Field trips start at 9:00 AM on Saturday. If you get there later than 9 AM, anyone there can show you where to collect. Verde Antique Marble, Tri-Colored Marble and Black Jade with Magnetite can be found. Bring gloves, large chisels, a small sledge and safety glasses.

Driving distance is 125 miles from Anaheim. Plan 2 hours driving time. Accommodations can be made at Victorville which is very close to the tailgate or you can camp right there at the tailgate. Please remember, this is a dry camp. There is no water in camp, but toilet facilities are available. On the dirt road, green and yellow signs will mark the route to the camping area.

If you need to reach me, my cell phone number is (714-801-2181).

\*\*\* Rain or shine!!!

**Please RSVP to**

**Norbert Bernhardt  
by MARCH 13, 2001.**

**Call 714-801-2181 or  
leave a message at 714-734-9665.**

**See you there!!!  
This should be a fun trip!**

## **Kids!**

*By Norbert Bernhardt*

### **KIDS !!!!!**

Please remember the club shop is open on Saturdays starting at 3:30 PM. I encourage you to come. I don't need to be there for you to be able to do lapidary work.

You know enough to polish stones with a little help from your parents and the Searchers. This is a great hobby for you now and in the future.

**Keep up the good work!**

## South Cady Mountains Field Trip

By Robert Burson

February 17 to 19, 2001

After scouting this area recently we found it to be proliferate in all types of chalcedony. Tons of float on the surface exhibits agates, jaspers, and jasp-agate with multiple colors and patterns.

### Camping facility

Dry camp at Hector Road exit.

### Directions from Barstow

Drive 36 miles East on Interstate 40, exit Hector Road. Head North and

look for the Searchers' sign. We will meet at 9:00 AM Saturday morning at the Dairy Queen in Ludlow, which is 15 miles east of the camp and 52 miles from Barstow.

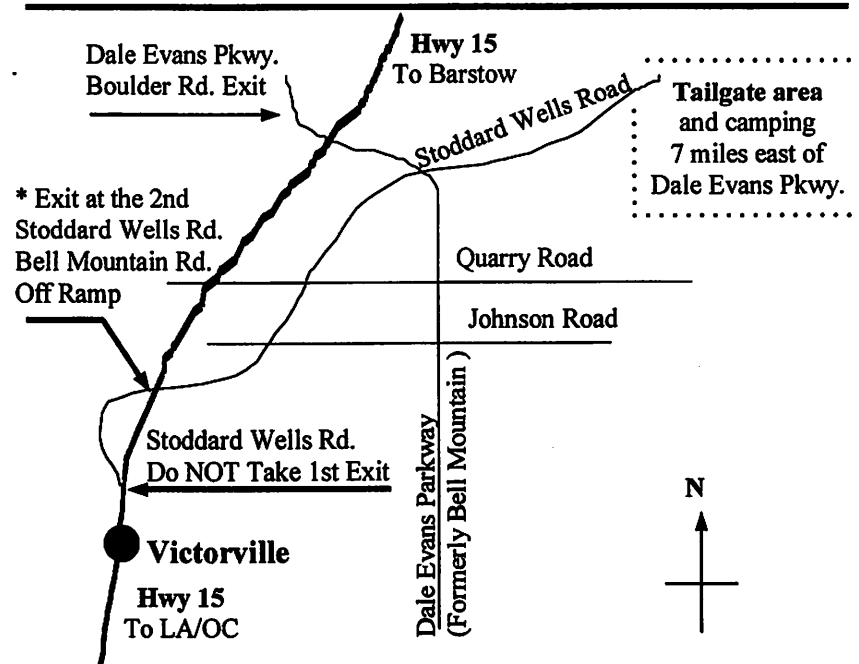
### Motel reservations

May be obtained at the Ludlow Motel (10 units) at 760/733-4338.

For additional information on locality, refer to *Desert Gem Trails* by Mary Frances Strong, South Cady Mountains. Questions may be directed to Robert at: Phone: 562/860-5938, E-mail: dancing.rocks@get.net

## Stoddard Wells Tailgate and Field Trip Map

By Norbert Bernhardt and Map by Joan Macomber



## Searchers Jargon (Continued)

By Walter Mroch

**Program** - normally refers to an educational presentation related to rock-hounding hosted by a club member or guest; the 1st Vice-president generally organizes this function.

**Field Trip** - an organized event where members gather and visit rock-hounding areas such as mines, the open desert, or any other place where rocks and minerals can be found; usually led by a specific leader (member); 2nd Vice-president is in charge of organizing.

**Club Function** - any club sanctioned function that is published in the club bulletin prior to an event or workshop or meeting.

**Non-club Function** - any function which is not specifically sanctioned by the club nor publicized by the club but may be organized ad hoc by members.

**Fee Camping** - there will be a charge for camping at the location; this is usually outlined prior to the field trip.

**Fee Dig** - there will be a nominal fee for collecting or digging rocks at the location; this is usually outlined prior to the field trip.

**Dry Camping** - prepare yourself by bringing extra water, food, toiletries, etc, i.e. all the supplies you may need since there are NO facilities available.

**RV Campground** - these usually have water, electricity, toilets, showers or usually at least two of the luxuries of life; a fee is normally required and ranges from \$10 to \$20.

**Four Wheel Drive Required** - this means that the field trip requires high clearance and the road is not recommended for passenger cars; try to arrange a ride with other members that have these vehicles in advance with the help of the field trip leader; members will try to accommodate you with a ride; this is noted in the club bulletin prior to the field trip.

**Passenger Car Passable** - any stock passenger car can make it to the collecting area so no special arrangements need to be made; this is generally noted in the club bulletin prior to the field trip.

**Potluck Dinner** - all members and guests on a field trip should plan on bringing some type of entree, dessert, vegetable or other edibles to have dinner with the other club members that want to participate; note that it is not mandatory to participate but it is recommended since you will make closer friendships; this is generally noted in the club bulletin prior to the field trip; bring your own utensils, plates and cups.

**Rocktail Party** - an event where one of the members has bought a new 4WD or recreational vehicle; it is customary for the club members that have taken the plunge to host a simple party in which champagne is served to all the members on a field trip when possible; bring your own utensils, plates and cups; those attending may bring snacks to share if

(Continued on next page)



## Searchers Jargon (Continued)

By Walter Mroch

*(Continued from previous page)*

they wish. Other events may also be celebrated on a field trip Rocktail Party.

**Rock Swap** - bring along any extra rocks that you might want to give to other members or to trade with other members; this is usually announced prior to the event; this may occur on a field trip or on a weekend.

**BBQ Party** - this is normally reserved for the summertime and means that the club members will have ample BBQing equipment available but each member should plan on bringing their own food to cook unless the club has announced that it will be supplying food and beverages; there is usually an informal BBQ Saturday night during the Annual Show.

**Post Show Dinner** - this is an informal gathering at a local restaurant to celebrate the closure of the Annual Show; interested members need to notify the Show Chairperson at the end of the Show to learn where the dinner is and to enable the Show Chairperson to reserve enough tables. Attendees select and pay for their own meals.

**Holiday Dinner** - a festive occasion held in December of each year to celebrate the upcoming holidays and to install the new officers for the upcoming year and honor the outgoing Board members for their contributions to the club operations for the past year; usually there is a dinner and some entertainment; this is a fee event normally about \$15-\$20 depending on meal selections.

## The World's Largest and Oldest Meteorite

*Northwest Newsletter, October 2000*

The world's largest and oldest meteorite has been discovered in China near the northeast city of Shenyang. The meteorite, locally called Haushita Hill, is estimated to be 4.5 to 4.6 billion years old and fell to earth 1.9 billion years ago. The me-

eteorite mound is 600 feet long, 250 wide and about 300 feet deep. It weighs about 2 million tons and is covered with granite. The meteorite is older than any natural earth rock. The site is planned to be a state protected nature reserve.



## The Annual Quartzsite and Beyond Field Trip (Continued)

By Beth Pelfrey

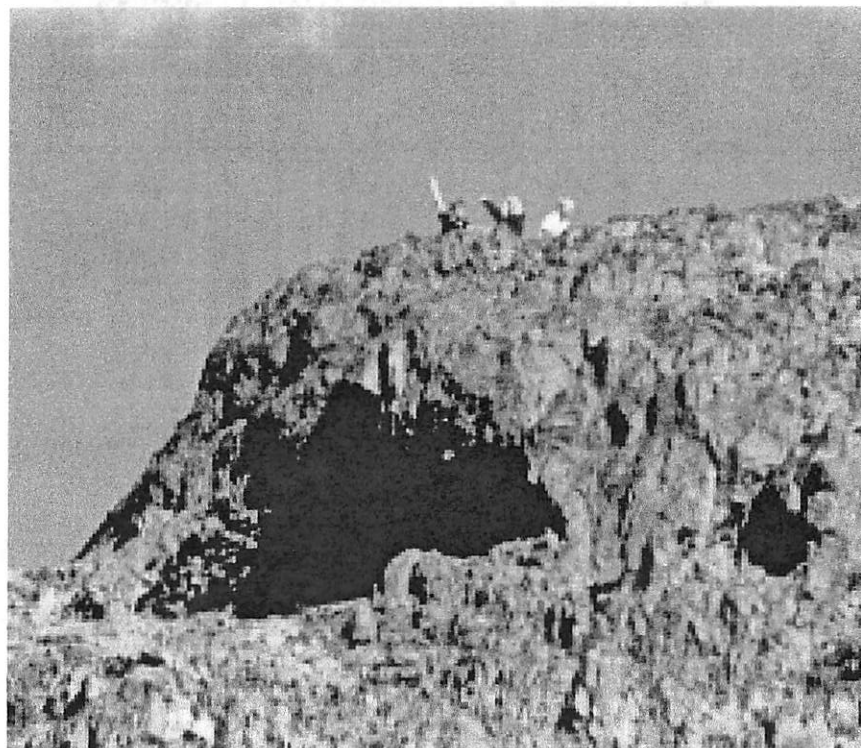
with a free phone." We must have looked very strange to them since after they called in the tow, they couldn't get away fast enough. A few days in the desert does wonderful things to the constitution, and the appearance...they fairly ran away!

The next day in Indio I got the alternator fixed, saw Robert Downey go to the Courthouse and made it home in time to watch Ally McBeal.

I was happy with the material I found even if my big geode turned out to be unremarkable and mostly mudball! I



am convinced that there are bigger and better ones there, in the Hauser Beds, the Potato Patch, Dino Hollow and so many other places not even found yet. Thank you Joan for a grand finale field trip.





## The Annual Quartzsite and Beyond Field Trip (Continued)

By Beth Pelfrey



*Continued from previous page)*

kids were like collard lizards: scampering up, down and around on two legs at the speed of youth.

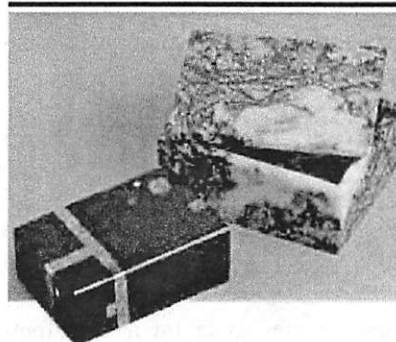
We all vowed to come back very soon to dig more rocks and I still need to find the hole I got so many geodes from a few years back. Clarke and I headed out Sunday late for home, made it to Desert Center for coffee where we met one Wendell Wilkie Pearson, born and named for the Hoosier from Ellwood, Indiana who ran for President and lost in 1940. Such interesting denizens in the desert! About two miles West of

Chiriaco Summit my batteries ran down (the alternator died...that's not a continuing mechanical saga; by the way, alternators are like good hair days: you have one then you don't have one!) We spent about one and one half hours on the side of the cold dark noisy speeding highway trying to get any trucker to call our breakdown in...well about 12:30 the CHP stopped by accident. Old Clarke said, "We haven't joined the twentieth century, no cell phone." One of the cops slowly lifted his big CHP flashlight up and shined it down the highway about 50 yards. "See that blue sign?", he said, "That's a call box



## Making Gemstone Boxes (Condensed)

By Anne Timmins



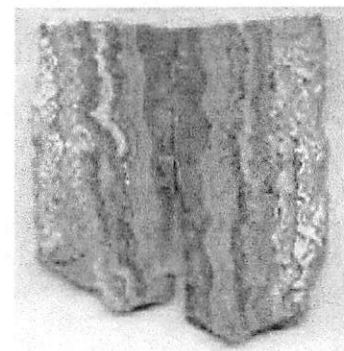
Many materials are suitable for boxes, such as lapis, labradorite, jade, rhodonite, agate, obsidian and chalcopyrite with intarsia inlays.

Material that has an even all-over design doesn't need to have the corners mitered, but materials with a definite light/dark design, e.g. "chicken track," picture rock, jasper/agates with dramatic color changes and stones with attractive lines will be enhanced by mitering the corners and matching the patterns. Stones such as labradorite, for which orientation is necessary, will also benefit from mitered corners. Banded agate or onyx and 3-D intarsia patterns make beautiful boxes.

Cut 3-5 slabs back-to-back from the same rough, making your slabs 3/16" thick. You could also "butterfly" 2 slabs and double the side of your lid. You will also need 2 slabs of same or different material for the box bottom and inside lid.

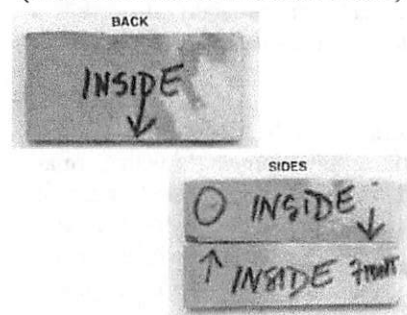
Lay out your slabs. Select the slab that you intend to use for your top.

This will determine the size of the box. It is important to select slabs of the same thickness for the sides and the ends of the box. An uneven thickness will cause gaps on the inside of the box at the mitered corners. Use the trim saw to cut slabs to size. If available, an overhead drop saw is preferable, especially for larger boxes, in order to rough out the pieces, cutting close to the lines.



Identify the outside and inside of each piece. Match the pattern on the lid to the sides and ends, and mark the inside and outside of each piece with permanent marker.

(Note: Arrows show bottom of box)



## Making Gemstone Boxes (Continued)

By Anne Timmins

Lap the outsides of each piece so that they are flat and can be placed back-to-back perfectly. Using water-soluble wood glue, glue the outside faces of sides together. Lap the ends and sides to fit the size of the lid (if a little smaller, you can adjust the size of the lid, but watch your pattern), making sure they are square.

Lay out the material for the bottom of the box and the inside of the lid. Lap one side of each and glue together. Lap to size, squaring carefully. The bottom needs to be squared with vertical sides, but the inside lid should be beveled to soften the edges.

Lap through the grits, then polish all exposed faces (these will all be inside faces of the box). Be careful to rotate the pieces during lapping to prevent "wedging".

Separate the glued sides and ends; soak in hot water for 12 to 24 hours. You can use a covered Pyrex bowl in an oven set at 150°F to 200° for half an hour or so if required. Slide the pieces off of each other, do not try to pry them apart. If necessary, raise the oven temperature again. (Leave the bottom and inside lid together at this time.)

Mitering can be done by eye, first marking the miter angle with permanent marker using the 45° angle of the tri-square. Glue all 4 pieces, with polished surfaces facing in the same direction, lining up the miter lines.

Lap to a 45° angle, check with a tri-square.

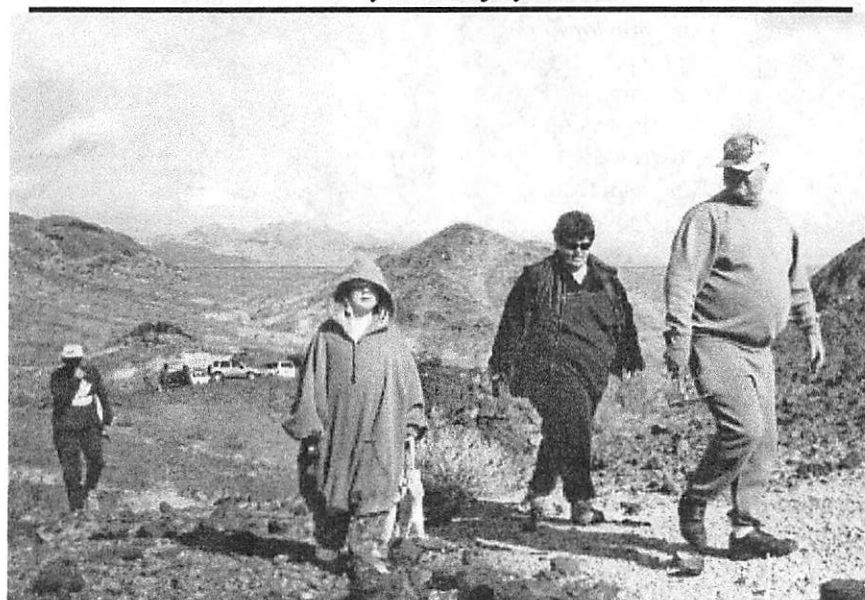
Adjust the sides and ends to fit the bottom and the inside lid, holding the sides and ends in place around the bottom and the inside of the lid. An angled block can be placed on the lap and used as a jig.

Separate the inside lid and bottom. Use a suitably sized block to support the inside lid just below the rim of the box. Rough-up the bottom 3/16" of the sides and ends, using masking tape to protect the rest of the polished surface. Use 330 epoxy and smooth a small amount on all surfaces to be glued. Assemble into place. Wrap plastic wrap around the polished face of the inside lid and insert, supported by the block to prevent the sides from leaning in and to hold shape. Secure tightly with rubber bands and let sit for at least 24 hours for the epoxy to set.

Polish the inside of the lid. Rough up the center surface, leaving approximately 1/4" polished surface around the edge. This creates a better bond. Glue the inside lid to the lid and place inside the box for position. Use the block for support and wrap with plastic wrap to prevent the epoxy from gluing the lid closed. Hold with rubber bands. When the epoxy is dry, remove excess with a single-edged razor blade. Holding the lid in place with water soluble glue, lap and polish all surfaces.

## The Annual Quartzsite and Beyond Field Trip (Continued)

By Beth Pelfrey



brown jasper. The road runner was there, I think I heard him trill "Beep-Beep!". We did find a good dig in the area of the Potato Patch which produced a few hollow geodes with good crystal structure and even a reddish color to some of them. I learned that my little mule and I can climb up and down really steep long and short slopes pretty easily. Of course, having an experienced co-pilot helped boost my ability to learn.

The weather was superb, albeit a tad rainy off and on, but who notices a little liquid sunshine in the great outdoors. Sunday, Robert Burson led us to a hidden hollow in the Straw Bed area, where geodes were thick on the ground. The hillsides produced some

larger ones and lots of buckets full were hauled out to be cut at the workshop. It was a thrill to watch kids have that much fun! Pot luck was delicious and Joan made sweet little apple pies in the light sprinkle. The campfire in the rain was not too well attended, but we diehards wouldn't give up!

Sunday Joan led us all over, to the "Dinosaur Hollow" as someone called it, and on to the famed Hauser Beds. I saw Ana Lorenzo and Norbert Bernhardt doing a lot of digging and hope they were pulling out hollow rocks! We climbed explored and found very colorful opalite seams, no geodes up high, however. All the  
(Continued on next page)



## The Annual Quartzsite and Beyond Field Trip (Continued)

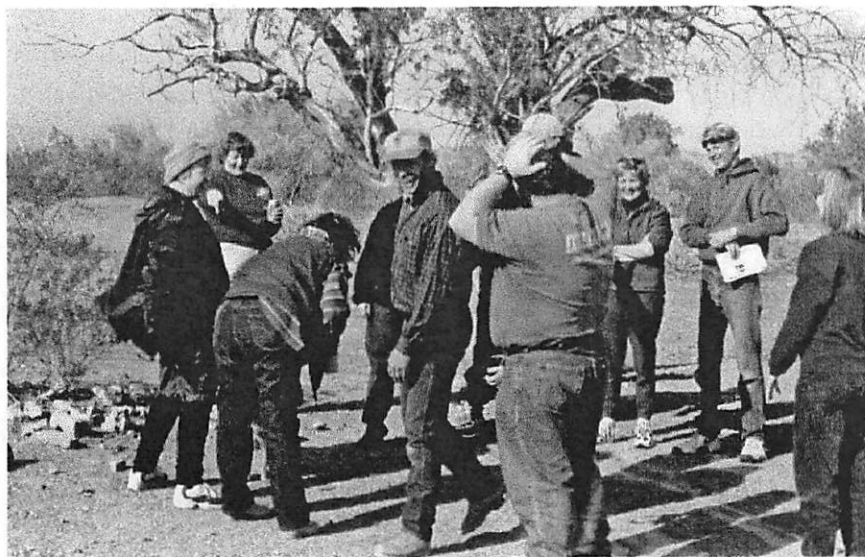
By Beth Pelfrey

(Continued from previous page)  
time in the workshop. Brad and Charlotte Lark, their three girls: Callie, Alyssa and Brittany and son Brandon with "borrowed brother" Austin all joined us, reminding us all of the exuberance and joy of the great outdoor desert. Brad is an off-roader, founder and publisher of *Xtreme4X4* magazine and they will be real positive assets to the club. Joan and Darren came without Beethoven and some folks went off to Q'site. Other new visitors, Sue Williams and her grandson Nick joined us on Sunday. Robert and Sharon Burson, old Toby another rock hound, Cal Caliendo and friend Katie with her little pebble hound Molly were there. I have probably left out someone...oh, yeah, the Norlunds and relatives. We had 28 people sign in to Coon Hollow, an



excellent turnout. Firewood gathering turned out to be such a special experience for our campers, that they vowed NEVER to forget to bring city wood again!

We did some exploring Friday with the Larks while I tried to find a certain hole I had been in a couple of times. I didn't succeed, but we found a few nodule/geode signs, lots of colorful opalite and the omnipresent



## The Annual Quartzsite and Beyond Field Trip Report

By Beth Pelfrey



Photos by Chris 'Cal' Caliendo and Katie Miller

The trip dawned (literally) for me on Tuesday well before the official Searchers trip. Joan Macomber, our Field Trip Leader, had announced that the trip would be at the Hauser Geode Beds on Friday through Sunday, January 26 through 28, 2001 rather than 'downtown' in Quartzsite. Clarke Benich and I spent almost all day cleaning my rig and readying it for the trip out of town. (Remember the last chapter, broken foot after the Mule Canyon trip? No chance to clean and repack especially between painting rooms, repairing walls, and cleaning closets of many years accumulation.)

We finally split from Anaheim late in the afternoon, had a smooth ride out, very little traffic, and as it was too late and very dark, opted to spend the night in the Wiley's Well Rest Area. It was Clarke's ####th birthday and he

felt a classy location would be the perfect venue for a party. I think he had in mind Coon Hollow; I wanted to drive in during daylight so chose the rest area. What a party it was: complete with an almost unintelligible toothless trucker snarling at 7 AM, "UHHNNN Move yer rig, I can't git out."

"Whuh...?", mumbles I in my nightie, "ERGHhhh, move yer rig, I can't git out.", he repeats. Clarke snarled, "Feed 'im bananas." and got up and moved the rig. After coffee we were coherent again, headed down the road for Coon Hollow. We were first (Continued on next page)



## The Annual Quartzsite and Beyond Field Trip (Continued)

By Beth Pelfrey

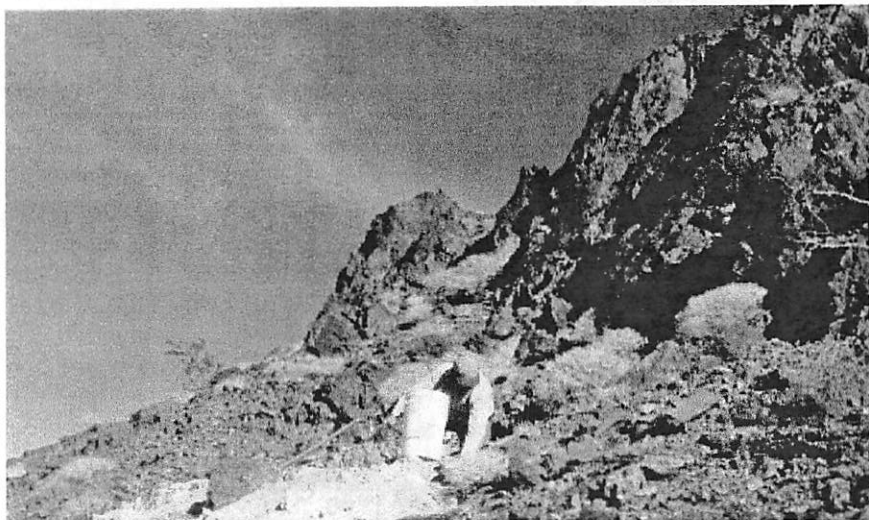


*(Continued from previous page)*

there, set up camp on a gorgeous morning and headed out to scout a couple of digs I wanted to return to. Sad to say, the entire area around those digs had been bought rock, cactus and holler by a doctor from Blythe who was distinctly unfriendly. He has fenced the area with three vicious strands of "bob war" and placed "No trespassing" signs about every few feet. I was bitterly disappointed at this, but also wish I had been the

one to buy it! We poked around all the rest of the day in the area, went back to camp and found Mike Casey fixing food. A sight for sore Rock-hounds who didn't have any geodes yet.

Good food, a campfire--though we had brilliantly forgotten firewood--a discussion about the next day, then sleep. Thursday we went to Quartzsite to Tyson's, found a few small things, expensive rocks and



## The Annual Quartzsite and Beyond Field Trip (Continued)

By Beth Pelfrey



equipment, and lots of people. It was a relief to be back at Coon Hollow and the quiet.

We stopped in at the "in town" segment of the club, saw Herb Beckman, Ken and Mary Nelson, Nancy and Jerry Norlund and Nancy's Aunt and Uncle. John and Susana Wease and rock hound Daisy stopped to chat. In addition to being long time Searchers,

they are also the Field Trip Leaders for the local club where they live in, Yucaipa. We heard there was a big crowd the night before at the campfire--excellent!

Friday and Saturday saw the arrival at Coon Hollow of Karyn Cummings and Joan Martinez, tent campers and newer members who spend a lot of *(Continued on next page)*

