

In This Issue

BIRTHSTONES
FIELD TRIPS
CFMS EVENTS

Searchers Board Officers

President: Tery Lynn Wheeler
1st VP: Veronica Purura
2nd VP: Steve Duncan
Director: Norbert Bernhardt
Secretary: Steve Pottberg
Treasurer: Pat Lynch
Federation Delegate:
Kim Campbell

Committee Chairpersons

Anaheim Arts Council:
Beth Pelfrey
Editor: Yery Camacho
Historian: Beth Pelfrey
Hospitality: Lorri Renck
Library
Membership: Glenn Benedict
Monthly Drawing:
Skip and Connie Cone
2011 Show Chair
Robert Burson
Show Co-Chair
Beth Pelfrey
Sunshine
Veteran's Coordinator:
Larry Richey
Website: Gary Grayson
Workshop: Adrian Callard
Rock's Kids:
Terri Benedict

THE PRESIDENT'S MESSAGE

Editor. Teri-Lynn is on vacation.

AUGUST BIRTHSTONES Peridot & Sardonyx

Peridot is said to host magical powers and healing properties to protect against nightmares and to bring the wearer power, influence, and a wonderful year. As peridot is a gemstone that forms deep inside the Earth and brought to the surface by volcanoes, in Hawaii, peridot symbolizes the tears of Pele, the goddess of fire and volcanoes. Today, most of the peridot supply comes from Arizona; other sources are China, Myanmar, and Pakistan. This gemstone comes in several color variations ranging from yellowish green to brown, but most consumers are attracted to the bright lime greens and olive greens. Peridot, in smaller sizes, often is used in beaded necklaces and bracelets.



Sardonyx is a form of onyx and is recognized by its layers of reddish brown and white banding. It was popular with the ancient Greeks and Romans who carried into battle talismans of sardonyx engraved with images of heroes such as Mars or Hercules, believing that this would bring courage and victory. Because of its attractive banding, sardonyx has long been used to fashion cameos (carved raised figures) and intaglios (the reverse of cameos). This gemstone is found throughout the world. The most attractive specimens are found in India, but material also is mined in Czechoslovakia, Brazil, Uruguay, Germany, and in the United States.



GENERAL INFORMATION

General Meetings: 7 PM, 2nd Tuesday of each month, Jan - Nov
Board Meetings: 7PM, 1st Wednesday of each month, Jan - Nov
Workshop: Thursday, 6 - 10 PM, free wire-wrap class, Saturday, 3 - 7 PM
Free silver-smithing class 1st, 2nd, 3rd Saturdays (schedule varies)
Location: Anaheim Downtown Community Center, 250 East Center St, Anaheim, CA 92805
Mailing Address: Searchers Gem & Mineral Society, Inc, P.O Box 3492, Anaheim, CA 92803
Membership Dues: Individual- \$25, Couples- \$35, Junior (17 & under)- \$10
Valid Jan.1-Dec.31, not prorated

Bulletin: Submissions due 3rd Friday of the month via e-mail to: editor@searchersrocks.org.
Bulletin distributed 1st week of each month. Mail exchange bulletins to the editor:
Yery Camacho, 13900 Studebaker Rd, #4, Norwalk, CA 90650
Charter Date: April 20, 1958
Affiliations: California Federation of Mineralogical Societies
American Federation of Mineralogical Societies
Sponsored by: Anaheim Arts Council
Web Site: www.searchersrocks.org

FIELD TRIPS

FIELD TRIPS 2010/ 2011			
Date	Leader	Location & material	Status
Sept 25&26, 2010	Robert Burson	Mule Canyon –agate and jasper, also possibly silver onyx	Done
Oct 9 &10, 2010	Norbert Bernhardt	Lucerne Valley-orbicular rhyolite and ??	Done
Nov Dates TBD	Steve Duncan- Joint trip with the Indian Wells club	Sheep Springs and Rainbow Ledge- agates and famous Rainbow Ridge jasp-agate	Done
Dec 12, 2010 Sunday	Steve Duncan	Sierra Pelona claim for banded onyx. Due to the busy holiday season this will be a one day trip	Done
Jan 21,22&23, 2011	Steve Duncan	Burro Creek AZ-agate, jasper, pastelite	Done
Feb 19&20, 2011	Jimmy Peterson	Siam Siding-Chapenite Cadiz-trilobite fossils	Cancelled
Mar 19&20, 2011	Robert Burson & Jay Valle	Chuckwalla Mts-agates (plume, moss, fortification and banded) and jaspers	Done
APR 9&10, 2011	Jimmy Peterson	Siam Siding-Chapenite Cadiz-trilobite fossils	Done
May 14& 15, 2011	Jim McGeough	Buffington Pockets Nevada (about an hour outside of Vegas)- Blue agate	Done
May 28, 2011	CFMS Trip	Calico Mountains for sagenite Details at CFMS website	Done
June 11, 2011	CFMS Trip	Somis-fossil sand dollars, clams, and sca;llops Details at CFMS website	Done
July 15-19, 2011	Norbert Bernhardt	Crystal Ridge Quartz crystals and Garnets	Done
July, 2011	CFMS Trip	Greenhorn Mt-rose quartz Details should become available on the CFMS website	Done
Sept 16,17&18, 2011	CFMS Trip	Jade Cove-Jade and Serpentine Details should become available at the CFMS website	CFMS Trip
Sept 10 & 11, 2011	Steve Duncan	Sandy Wash for agate Lucerne valley for orbicular rhyolite	Planned
Oct TBD	Jim McGeough	Goldfield Nevada	Tentative

The Rock Slab News		Searchers Gem & Mineral Society	
		Agates and more 3 collecting days trip	
Nov, 2011 Dates TBD	Robert Burson	Baxter Wash? Chuckwallas? Wileys Well?	Tentative

For a more complete listing of shows go to website: www.cfmsinc.org
Also see www.motherlodemineralsociety.com/events.html.

Other websites of interest:

www.firemountaingems.com
www.southsunproducts.com
www.pioneergem.com

www.route66goldminers.org
www.auctionmasters.com

CLUB MEETING ACTIVITY SCHEDULE 2011

Date	Presenter	Subject
Tuesday, Sep 13 th	Joe Girtner	"Jewelry Processes – inlay, jewelry design, process, and sculpting"
Tuesday, Oct 11 th	NONE	Silent Auction
Tuesday, Nov 8 th	None	Officer election/pie night

UPCOMING CFMS GEM SHOWS

September 2-5 - FORT BRAGG, CA

Mendocino Coast Gem & Mineral Society
Town Hall
363 N. Main St, (corner of Main & Laurel)
Hours: Fri-Sun 10-6; Mon 10-4
Jerry Sommer (707) 917-1833

September 10-11 - DOWNEY, CA

Delvers Gem & Mineral Society
Woman's Club of Downey
9813 Paramount Blvd.
Hours: Sat 10-6; Sun 10-4
Guynell Miller (562) 633-0614

September 17-18 - STOCKTON, CA

Stockton Lapidary & Mineral Club
Scottish Rite Masonic Center
33 W. Alpine Avenue
Hours: 10-5 Daily
Jan Bradley or Dorothy Tonnacliff
(209) 629-3837 / (209) 603-4539
Email: slmshow@juno.com

Website:

<http://www.stocktonlapidary.com>

September 24-25 - MONTEREY, CA

Carmel Valley Gem & Mineral Society
Monterey Fairgrounds
2004 Fairgrounds Road
Hours: Sat 10-6; Sun 10-5
Matt Biewer (831) 659-4156
Email: mattbiewer@aol.com
Website: <http://www.cvgms.org>

October 8-9 - TRONA, CA

Searles Lake Gem & Mineral Society
13337 Main Street
Hours: Sat; 7:30-5; Sun. 7:30-4
Jim & Bonnie Fairchild (760) 372-5356
Email: slgms@iwvisp.com
Website:
www1.iwvisp.com/tronagemclub

October 15-16 - ANDERSON, CA

Shasta Gem & Mineral Society
Shasta District Fairgrounds
Briggs Street

Hours: Sat. 9-5; Sun. 10-4
Steve Puderbaugh (530) 365-4000; Cell
(530) 604-2951
Email: steve@applyaline.com
Website:
www.shastagemandmineral.com

October 15-16 - PLACERVILLE, CA
El Dorado County Mineral & Gem
Society
El Dorado County Fairgrounds
100 Placerville Drive
Hours: 10-5 daily
Karen Newlin, (530) 676-2472
Email: info@rockandgemshow.org
Show Website:
www.rockandgemshow.org

October 15-16 - SANTA ROSA, CA
Santa Rosa Mineral & Gem Society
Veterans Memorial Auditorium
1351 Maple Ave
Hours: Sat. 10-6: Sun 10-5
Debbie Granat (707) 542-1651
Email:
santarosarockshow@hotmail.com
Website: www.srmgs.org

October 15-16 - WHITTIER, CA
Whittier Gem & Mineral Society
Whittier Community Center
7630 Washington
Hours: 10-5 Daily

Marcia Goetz (626) 260-7239
Email: joemar1@verizon.net

November 5-6 - LANCASTER, CA
Palmdale Gem & Mineral Club
Antelope Valley Fairgrounds
2551 West Ave. H & Hwy 14
Hours: 9-5 daily
Cheri George, (562) 243-8470
Email: lizardwoman3@yahoo.com
Website:
www.palmdalegemandmineral.com

November 5-6 - SAN DIEGO, CA
San Diego Mineral & Gem Society
Al Bahr Shrine Center
5440 Kearny Mesa Road
Hours: Sat. 9:30-5; Sun. 10-4
Bob Hancock, (619) 461-5783, (619)
889-6886 cell
Email: rhbobhancock@cs.com
Website: www.sdmg.org

November 19-20 - OXNARD, CA
Oxnard Gem & Mineral Society
Oxnard Performing Arts Center
800 Hobson Way
Hours: Sat. 9-5; Sun. 10-4
Norb Kinsler, (805) 644-6450
Email: show_info@oxnardgem.com
Website: <http://www.oxnardgem.com>

SEARCHER'S GEM AND MINERAL SOCIETY PICNIC AUGUST 21, 2011

Here's the basic details for the picnic and potluck:

Searcher's Gem and Mineral Society Picnic/ Potluck
Sunday, August 21st at 10:30am
Yorba Regional Park
Site #6 by parking lot 2 (same as last year by the lake)

FIELD TRIP SEPT 10&11, 2011 Sandy Wash (in the South Cady's) and Lucerne Valley

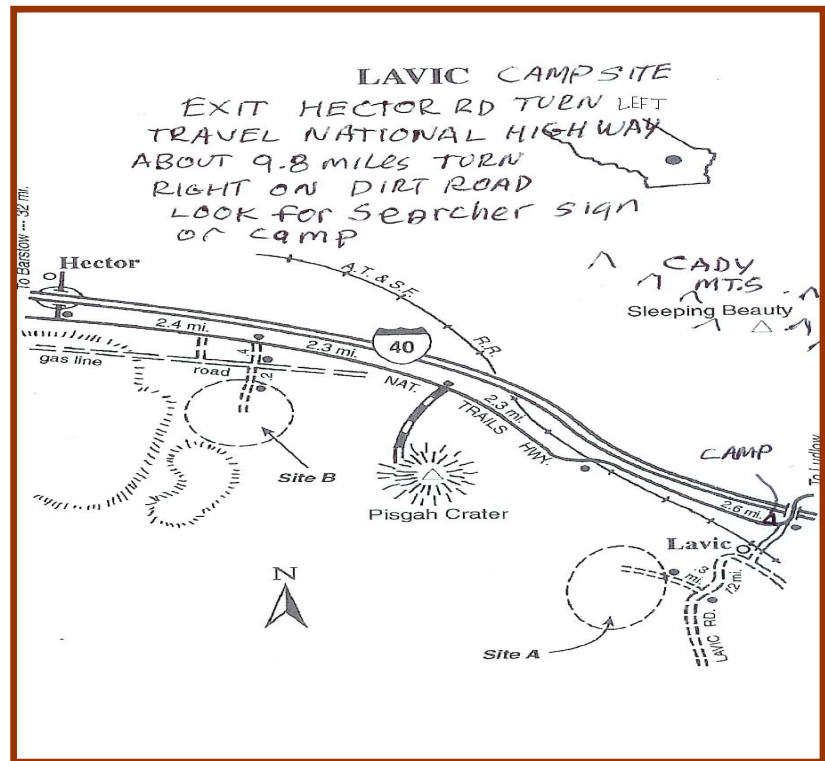
Agate, Jasper and Druzy in Sandy Wash, Orbicular Rhyolite in Lucerne

The September trip will be a bit different, in that we will actually be accessing two different locations that are not very close together. Saturday we will collect at Sandy Wash in the Cadys, one of our favorite places. One problem is that the BLM has closed the access road, so it will be about a 1 mile hike from where we park to the collecting. The collecting is agate and druzy in float, there is also agate to be dug, and if you are motivated there are very nice agate seams which you will need to hard rock mine (small sledge, chisels, gads, etc). We will spend all day here, so you will want to bring your lunch, as well as a lot of water. Saturday's trip starts at 0830, we will leave from the campsite on Lavic Siding Rd.

Sat night we will camp at Lavic Siding, coincidentally there is good jasper collecting near the camp. I assume someone will be at the camp Friday for anyone who wants to come early. We will have our traditional Sat night potluck and bonfire.

Directions to the Lavic Camp:

I15 north to Barstow, I40 east to Hector road exit. Turn right at the bottom of the exit, and then left (east) on Nat'l Trails Hwy. Go about 9.8 miles to where Nat'l Trails Hwy makes a sharp left and crosses over the freeway. Do not cross over the freeway, instead turn right onto the dirt road Lavic Siding Rd. Camp is maybe a mile down this road, follow the Searcher signs. Sunday we will break camp early, and head to Lucerne. This is about a 1.5 hour drive. We will meet at the meeting place in Lucerne Valley (our normal campsite) at 1000 hrs. From there we will go to the nearby mine, and collect the orbicular rhyolite. Last trip we finally unlocked the secret of the orbicular rhyolite, and should be able to ensure everyone finds some. Digging bars and Geo picks (or the equivalent) will be helpful here, as some of the best material is collected by breaking apart rock faces. The rock faces are quite weathered, so they actually break quite easily into chunks. By 2 PM everyone should have all they need, and we will head for home.



Directions from Lavic Camp to the Lucerne Valley meeting point:

Return (I40W to I15S) to Barstow. Exit 183 to CA-247/Barstow Rd. Go south. Go 33.1 miles, at that point CA247 turns left, it is now CA247/Old Woman Spring Rd. Continue 5 miles on Old Woman Spring Rd to Camp Rock Road. Turn left on Camp Rock Rd and drive 3.9 miles, stay right at Sanitary Fill sign and drive 2.3 miles more. At this point the road turns to dirt. Drive 4.7 miles on the dirt and you

will see a small hill with gray and black boulders. This will be our meeting spot, at 10:00 we leave for the collecting site, 3.7 miles from the meeting area.

The weather could be very hot, so be prepared with hats, sunscreen, and lots of water. The campsite is a dry camp, with no facilities of any kind. There are supplies and gas available in Ludlow 7 miles east of Lavic Rd. There is also a funky motel there, there are many motels available back in Barstow if funky is not your style.

COPPER MINERALS FROM WEST JAVA, INDONESIA

Dear Fellow Searchers,

A few days ago, I received samples of jasper that looked not attractive due to neither its color nor its quality. On the cut surface I could see visible pores, open cracks, and white or bluish quartz / chalcedony veins (Figure 1). I was told that the jasper was collected from a remote place in West Java, in the middle of a dense forest which seemed had not been touched by anyone else. The jasper was thought to contain copper ores that was reported being intensively sought by the Chinese or Korean enterprises). Although I considered the jasper as useless gems, but after learning their background story, then I intend to send them to laboratory for chemical analyst for its content of base or precious metals.

As usual, before sending the jasper to the laboratory, I checked the cut surface under a hand microscope with a magnifying of about 300 times. I was quite surprised to see attractive pictures that I had never seen so far. Veins of blue color were seen to cut the red jasper (Figure 2). On the other part, there was a relatively thick chalcedony with minute cracks that were filled by dark blue colored mineral. In addition, there was also pale blue-green mineral (Figure 3). The ultimate beauty of the jasper can be seen on the last picture here below where the variation and hues of colors are so captivated, with green minerals in the form of round granules (Figure 4). If there is picture of this kind on gems ring or pendant, I won't be able to imagine its price.

Copper minerals: Azurite and Malachite

The next step I would like to do was to define the name of the blue and green minerals. For this purpose, my memory suddenly went to the moment of practical assignment on mineralogy when I was student at the Institute of Technology of Bandung nearly 50 years ago. A combination of azure blue and green minerals was surely a of Azurite - $\text{Cu}_3(\text{CO}_3)_2(\text{OH})_2$ and Malachite - $\text{Cu}_2(\text{CO}_3)(\text{OH})_2$. To get more information about these two minerals, I opened several books on mineralogy and found that Azurite mineral contain copper oxide / CuO of 69.24%, while Malachite mineral contain CuO of 71.95% (Rudolf Duda & Rubos Rejl, 1986). Then I convinced that the jasper contain a certain amount of copper ores.

The story of this jasper reminded me to the Indonesian proverb that says : ugly face splits the mirror. If I followed my emotion to treat the jasper as a bad and useless gems, I certainly would have got rid of it. Consequently I would not be able to admire God's creation as seen on this jasper. Apart from it, who knows there would be precious metal content in it. Well, if it is proved so, I will certainly try to make a short survey to the jasper's location. If the area has been officially claimed as Mining Area of others, then I will just take a few pieces of the jaspers, simply to complete my minerals collection.

That is my dear fellow Gem-Lovers, the story of jasper that in spite of its bad appearance, but with God's will, it contains a very significant value. In addition, the attractive microscopic images may inspire the painter or designer of garment in creating their painting or garment products. I do hope that this story can enhance our knowledge on mineralogy.

With kindest greetings,
Sujatmiko (Miko)



Figure 1 : Sample of the bad jasper. Please note the white chalcedony veins on the surface of the cut jasper (below right)

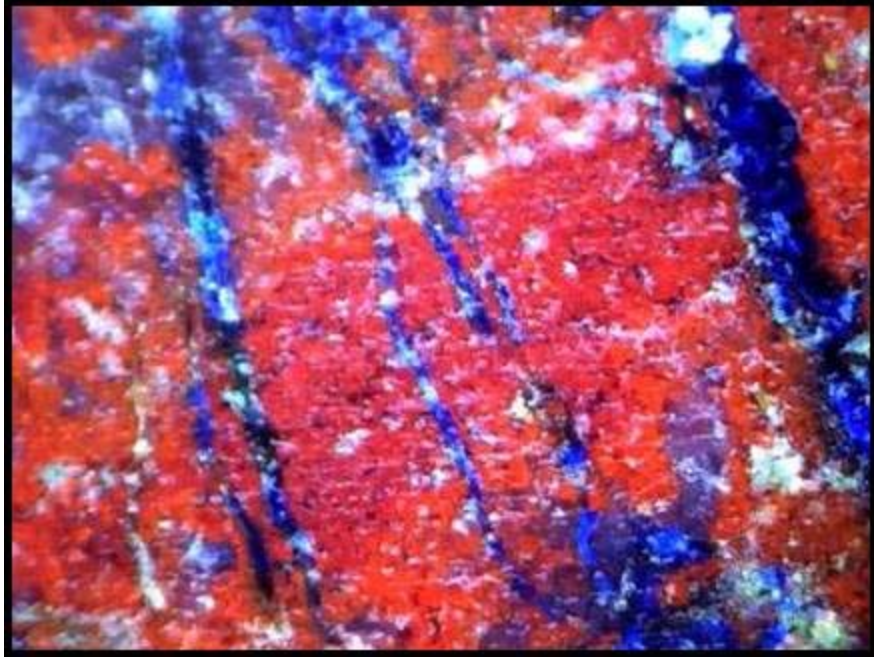


Figure 2 : Veinlets filled with Azurite that cut the jasper.



Figure 3 : Relatively thick chalcedony vein with cracks that were filled by Azurite . Please note the greenish blue Malachite.

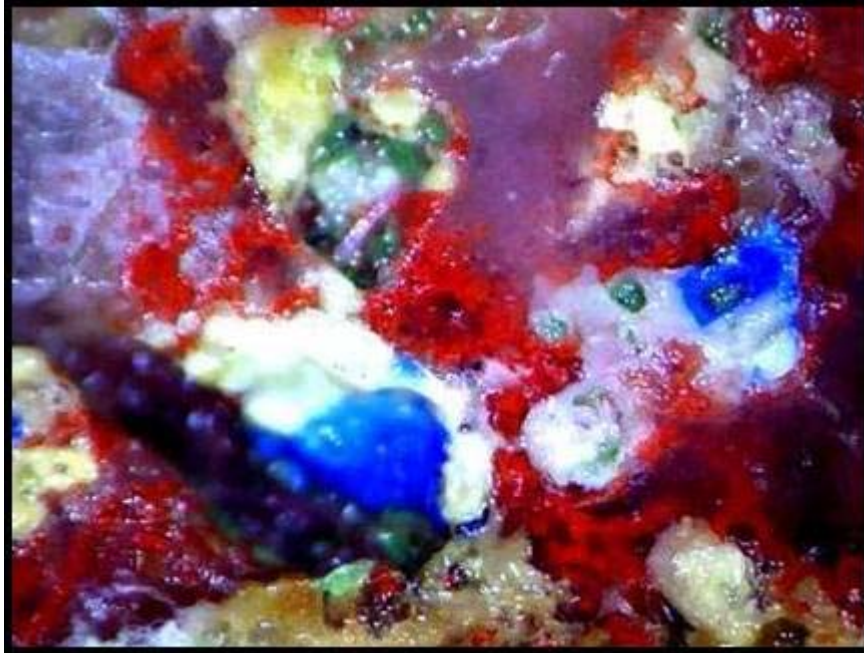


Figure 4 : The real beauty : a combination of Azurite, Malachite (round granules), Jasper, and clear Chalcedony

THE NEVADA MINERAL & BOOK COMPANY

<http://minbooks.net/>

342 S. Tustin Street • Orange, CA 92866

Ph. 714-633-1549

Rusty's Gold & Treasure Hunting Supply

Club members show your ID card and receive a 10% off purchases over \$100

Authorized dealer for Garrett, Fisher, and Tesoro metal detectors

5642 E. La Palma Ave., #208, Anaheim, CA 92807 (corner of La Palma and Imperial Hwy.)

714 693-GOLD (4653). Store hours: Tu - Sat 10am - 6pm