

SEARCHERS BOARD OFFICERS

- President: Heather Jaeckels
- 1st VP: Veronica Purura
- 2nd VP: Robert Burson
- Director: Jay Erb
- Secretary: Jamie Cassidy-Curtis
- Treasurer: Charlotte Spalding
- Federation Delegate:
• Kim Campbell Erb
- Committee Chairpersons
- Anaheim Arts Council:
John O'Connor
- Editor: Linda Horn
- Historian: Beth Pelfrey
- Hospitality: Lorri Renck
- Library Membership:
Beth Pelfrey
- Monthly Drawing:
- Sunshine:
- Veteran's Coordinator:
- Website:
- Workshop: Adrian Callard
- Rock "N" Kids: Norbert Bernhardt

IN THIS ISSUE

Field Trips	2
Club Meetings	3
Upcoming CFM Shows	4

POINTS OF INTEREST

FIELD TRIPS

GENERAL MEETING

SPEAKERS

The Rock Slab News

The Searchers Gem & Mineral Society, Anaheim CA

VOLUME 54, ISSUE 8



AUGUST 2017

The President's Message

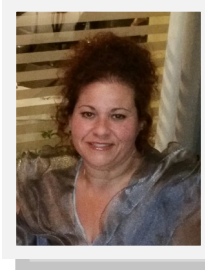
Hello Searchers and Friends!

Boutique time is almost upon us again!

AT THE

Searcher's

G e m & M i n e r a l S o c i e t y



Our first Holiday Boutique was a smash hit! Since it was so very well received, this October we will again be holding a Holiday Boutique in place of our October meeting. We will showcase the work of our talented members including: jewelry, lapidary, holiday gifts, décor, and a variety of other artfully crafted items.

This will be a wonderful event for outreach and fundraising. We will be ramping up that outreach to rally bigger crowds, in order to support our member vendors and increase club interest.

Due to the great response we've doubled the size of the event space and hope to accommodate all members who wish to participate. Please contact a board member with thoughts or suggestions. To participate as a volunteer or vendor, please contact me directly or use the "table request" here in the newsletter.

Contact: Heather Jaeckels Cell: 310.686.814 Email: hkjaeckels@gmail.com

Date: Tuesday, October 10th

Time: 6pm to 9pm

Location: Downtown Anaheim Community Center, Assembly Hall
250 East Center Street, Anaheim, CA 92805

Parking: Free in Community Center lot

Help Wanted! We still need a member to man the entrance table at our monthly meetings. Please consider helping out and volunteering.

Please remember to bring a rock or slab for the Veterans!

Heather Jaeckels 2016 President, Searchers Gem and Mineral Society

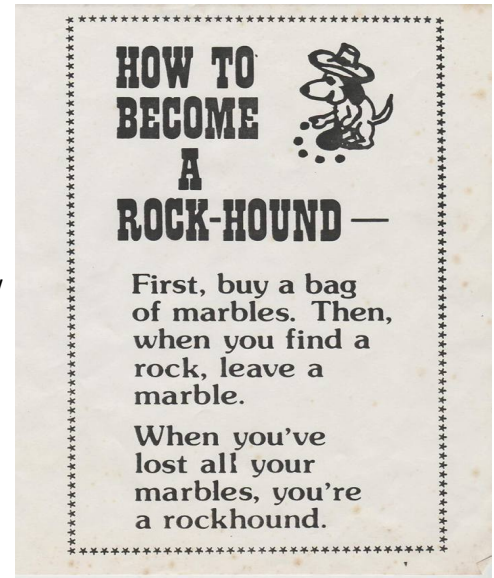
Field Trips

DATE	LEADER	LOCATION	STATUS

Field Trips planned for the Year

August	Daytrip	TBA
September		Opportunity ???
October 14th to 15th		Searles Lake
Nov. 4th & 5th		Whittier Claim
November 23rd thru 26th		Afton Canyon

Note that these are joint club trips. If as these trips come up you are interested in going contact Robert Burson at (562) 706 4892. He will then let the field trip leader know how many Searchers will be joining the trip. Detailed plans should be available before the trip so you will know the trip details.



Big Rock Sale

8-13 9 AM to 1 PM

33020 Dowman Lake Elsinore, Ca. 92530.

Jo Ann Mc Cracken owner of "The Rock Bin" passed away on July 12th. There will be a large sale of Rough, slabs, jewelry from 55 years of business. Jo Ann was the founding member of the Lake Elsinore Gem and Mineral Club.

For field trip
information

contact: Robert

Burson V.P. Field

Trips, Searchers

Gem and Mineral

Society,

bursonrocks@veriz

on.net

Holiday Boutique Table Request

To participate as a volunteer or vendor, please complete and drop this form at the general meeting or mail to:

SEARCHERS GEM AND MINERAL SOCIETY

Searchers Holiday Boutique

P.O. BOX 3492

ANAHEIM, CA 92803

NAME: _____

ADDRESS: _____

PHONE: _____

EMAIL: _____

1 TABLE - \$25

2 TABLES - \$50

Please contact a board member with thoughts, suggestions, or questions.



Speaker Description: The man who doesn't need a microphone to get our attention, Lothar of the SCC Gemology program returns to deliver a talk on Jade; the gem representing two popular green stones. He teaches intro and advance Colored Stones at SCC, and for anyone who hasn't taken his class yet you can be expected to be severely tempted after he's done.

Club Meeting Activity

DATE	PRESENTER	SUBJECT
8-8-2017	Lothar Vallot	"Jade"
9-12-2017	Jim Bowden	"The Southern California Gold Rush"

For a more complete listing of shows go to web-site:

www.cfmsinc.org

Upcoming 2017 CFMS Gem Shows

AUGUST

August 4 - 6: NIPOMO, CA

Orcutt Mineral Society
Nipomo High School
525 Thompson Avenue
Hours: Fri-Sat 10-5, Sun 10-4
Contact: Wayne Mills, (805) 481-3495
Email: wwmills50@hotmail.com
Website: www.omsinc.org

August 19 - 20: SAN FRANCISCO, CA

San Francisco Gem & Mineral Society
San Francisco County Fair Building
9th Avenue & Lincoln Way
Hours: Sat. 10 - 6; Sun. 10 - 5
Contact: Ellen Nott
Email: ellen_nott@yahoo.com
Website: www.sfgemshow.org [Show Page](#)

SEPTEMBER

September 23 - 24: LODI, CA

Stockton Lapidary & Mineral Club
Lodi Grape Festival Grounds
413 East Lockford Street
Hours: 10 - 5 daily
Contact: Jerold Kyle, (209) 368-9411
Email: jeroldkyle@yahoo.com
Website: www.stocktonlapidary.com

September 23 - 24: MONTEREY, CA

Carmel Valley Gem & Mineral Society
Monterey Fairgrounds
2004 Fairgrounds Road
Hours: 10 - 5 daily
Contact: Janis Rovetti, (831) 372-1311
Email: janis12@sbcglobal.net
Website: www.cvgms.org

September 23 - 24: REDWOOD CITY, CA

Sequoia Gem & Mineral Society
Community Activities Building
1400 Roosevelt Avenue
Hours: 10 - 5 daily
Contact: William Spence, (408) 398-7502

Email: bill.spence777@sbcglobal.net

Website:

www.sequoiagemandmineralsociety.org [Show Page](#)

OCTOBER

October 7 - 8: BORON, CA

Mojave Mineralogical Society
Boron Community Center
26998 John Street
Hours: 9 - 4 daily
Contact: Bruce Davies, (760) 338-8829
Email: daviesb@yahoo.com
Web Site: [Facebook page](#)

October 7 - 8: GRASS VALLEY, CA

Nevada County Gem & Mineral Society
Nevada County Fairgrounds
11228 McCourtney Road
Hours: 10 - 5 daily
Contact: Anita Wald-Tuttle, (530) 277-6195
Email: anitaw1t3@gmail.com
Website: www.ncgms.org

October 8: FALLBROOK, CA

Fallbrook Gem & Mineral Society
Fallbrook Gem & Mineral Building
123 West Alvarado Street
Hours: 9 - 4
Contact: Janice Bricker, (760) 728-1130
Email: fgms@sbcglobal.net
Website: www.fgms.org

October 14 - 15: TRONA, CA

Searles Lake Gem & Mineral Society
Gem Show Building
13337 Main Street
Hours: Sat 7:30 - 5; Sun 7:30 - 4
Contact: Jim & Bonnie Fairchild, (760) 372-5356
Email: slgms@iwwisp.com
Website: www1.iwwisp.com/tronagemclub [Show Flyer/Details](#)

October 21: WEST HILLS, CA

Woodland Hills Rock Chippers
First United Methodist Church
22700 Sherman Way
Hours: 10 - 5
Contact: Virginia Rotramel, (951) 403-2634
Email: ginigem1@gmail.com
Website: www.rockchippers.org [Show Page](#)

October 21 - 22: PLACERVILLE, CA

El Dorado County Mineral & Gem Society
El Dorado County Fairgrounds
100 Placerville Drive
Hours: 10 - 5 daily
Contact: (530) 676-2472
Email: info@rockandgemshow.org
Club Website: www.eldoradorocks.org [Show Page](#)

October 21 - 22: SANTA ROSA, CA

Santa Rosa Mineral & Gem Society
The Veterans Memorial [\(new date & location\)](#)
1351 Maple Avenue
Hours: Sat 10 - 6; Sun 10 - 5
Contact: Jolene Coon
Email: santarosarockshow@hotmail.com
Website: www.srmgs.org

October 28 - 29: LOS ALTOS, CA

Peninsula Gem & Geology Society
Los Altos Youth Center
One North San Antonio Road
Hours: 10 - 5 daily
Contact: Steve Jobe, (408) 834-5384
Email: steve_job@sbcglobal.net
Website: www.pggs.org [Show Page](#)

October 28 - 29: SACRAMENTO, CA

Sacramento Mineral Society
Scottish Rite Temple
6151 H Street
Hours: 10 - 5 daily
Contact: Alyssa Mesiznger, (916) 662-5819
Email: gem-show@sacramentomineralsociety.org

August Birthstone: Peridot



Tips on the Care and Maintenance of Saw Blades from Diamond Pacific

1. For longer life with your saw blade, your saw and equipment must be in proper condition. Whenever you install a new blade, check your arbor shaft for radial and axial play. Try moving the shaft back and forth, and in and out. Any movement indicates the arbor shaft needs adjustment, new bearings, or replacement.

Lapidary blades are manufactured with the arbor hole .005" oversize to provide a snug fit on the shaft. If the shaft is worn, the blade will not spin concentrically with the arbor.

The machine should be located on a level floor or platform so that it will not vibrate during operation. All belts should be properly tensioned.

2. Flanges support the blade over a large surface area and help prevent deflection at the beginning and ending of a cut where there is little or no workpiece support. They must measure at least one quarter of the blade diameter. Make certain the flanges are smooth, flat and parallel, without gouges or burns on the surfaces. Flanges must be recessed about three quarters of their diameter from their center. This provides support to the blade around its outer area while avoiding distortion of its center core.

3. A lapidary diamond saw blade requires a lubricant which also works as a coolant. An ample supply must be directed into the saw cut to lubricate the blade rim and workpiece, and to flush out all debris. A light cutting oil is best, and is required for most slabbing operations. A water soluble oil or plain water can sometimes be used in trimming operations. Rust inhibitors should be used and extra care taken to prevent rusting of the blade and/or saw.

4. With a new blade it is best to make your first cut using a soft, abrasive material. This will assure that the blade is properly broken in by bringing the rim into concentricity with the arbor and will open up the rim, increasing diamond protrusion.

5. Start cuts by feeding in the workpiece when the blade is running at operating speed. Make sure the surface of the workpiece will not cause the blade to deflect at point of contact. If the blade starts cutting to either side of its plane of rotation, you will get a nonparallel cut and even damage to the blade.

When a cut is almost complete, a break will often occur, leaving a jagged spur. This spur can damage the blade. To prevent this, infeed pressure should be reduced or stopped near the end of the cut. Saws with automatic power cut-off, when properly set, will do this for you. With screw feeds, the workpiece and vise can be hand fed.

6. A diamond blade should be reversed occasionally to insure even wear and long life. A diamond blade can become glazed over at its cutting edge especially when cutting hard, dense material. To sharpen the blade, make a few cuts in a soft, abrasive material. This will generally abrade away some of the metal bond and rim and expose more diamond.

<http://www.diamondpacific.com/careandmaint.html>



Searcher's Potluck- Picnic 2017

Date and Time: Saturday, August 5th from 11am to 3pm

Location: Yorba Regional Park, 7600 E. La Palma Ave, Anaheim Hills, CA 92807



Area: Site #6 by Parking Lot #2

Contacts: Veronica Purura (714) 501-9959

The Searcher's will provide sodas and water

Parking: \$5 fee (no free re-entry)

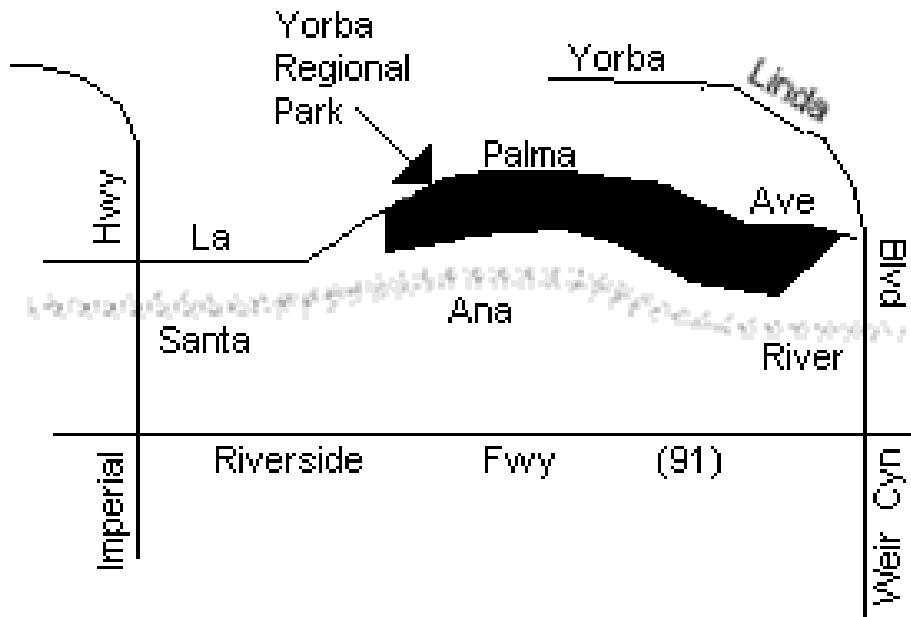


Please respond to Veronica angeldragonoflight@yahoo.com

if you are planning on attending and let her know what you would like to bring.

Notes: Please remember to bring appropriate serving utensils when you bring a dish.

Members can bring their own grill if they chose.



Searchers Gem & Mineral Society

General Information



Check our website for unexpected changes in schedule!

www.searchersrocks.org

General Meetings: 7 PM, 2nd Tuesday of each month, Jan - Nov

Board Meetings: 6PM, 1st Tuesday of each month, Jan - Nov

Workshop: Thursday, 6 – 10 PM, free wire-wrap class.

Saturday, 3 – 7 PM Free silver-smithing class 1st, 2nd, 3rd Saturdays (schedule varies).

Location: Anaheim Downtown Community Center
250 East Center St.
Anaheim, CA 92805

Mailing Address: Searchers Gem & Mineral Society, Inc.
P.O Box 3492
Anaheim, CA 92803

Website: www.searchersrocks.org

Membership Dues:	Individual	\$25
	Couple	\$35
	Junior (17 & under)	\$10

Valid Jan.1-Dec.31, not prorated

Bulletin: Submissions due 3rd Friday of the month via e-mail to: editor@searchersrocks.org.

Bulletin distributed 1st week of each month. Mail exchange bulletins to the editor:

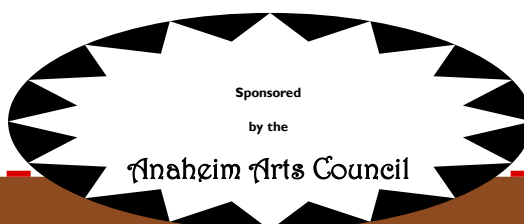
Searchers —Linda Horn Editor

P.O. Box 3492

Anaheim, Ca. 92803

Charter Date: April 20, 1958

Affiliations: California Federation of Mineralogical Societies



PtCreations

2812-B Walnut Ave.
Tustin, Ca 92780 714-904-2181
www.ptcreations.net

THE NEVADA MINERAL & BOOK COMPANY

<http://minbooks.net/>

342 S. Tustin Street • Orange, CA 92866
Ph. 714-633-1549



The Agateer Lapidary Supply

www.theagateer.com

(657) 464-0400

Licensed Dealer

Saws, Diamond Saw Blades – Cutting Oil – Dressing Sticks
Cabbing Machines – Diamond Wheels – Dop Supplies
Tumble-Bee Tumblers, Grit Kits, Tumbling Media

Free Delivery within Orange County for orders over \$150



15131 Triton Lane #117
Huntington Beach, CA 92649
714-893-6643
www.sccgemology.org