

SEARCHERS BOARD OFFI- CERS

- President: Teri Lynn Wheeler
- 1st VP: Veronica Purura
- 2nd VP: David Nelson
- Director: Jimmy Peterson
- Secretary: Jamie Cassidy-Curtis
- Treasurer: Jay Erb
- Federation Delegate:
 - Kim Campbell
- Committee Chairpersons
- Anaheim Arts Council: Beth Pelfrey
- Editor: Yery Camacho
- Historian: Beth Pelfrey
- Hospitality: Lorri Renck
- Library Membership: Beth Pelfrey
- Monthly Drawing: Skip and Connie Cone
- Sunshine:
- Veteran's Coordinator: Larry Richey
- Website: Walter
- Workshop: Adrian Callard
- Rock's Kids: Terri Benedict

IN THIS IS- SUE

Field Trips	1
Club Meetings	2
Upcomming CFM Shows	4
Our Show	4

POINTS OF INTEREST

FIELD TRIPS

- April 20 & 21, Cadiz, CA

APRIL GENERAL MEETING SPEAKER

- * postponed

The Rock Slab News

The Searchers Gem & Mineral Society, Anaheim CA

VOLUME 50, ISSUE 4



APRIL 2013

The President's Message

Hello Searchers,

We are at the busiest time of year for our club, the Annual Gem and Mineral Show is a mere 6 weeks away on May 4th and 5th! Please step up and volunteer some of your time in the kitchen, security, hospitality or general assistance where needed. The success of our show lays solely on our members each getting involved and helping out. If you would like to help in the kitchen area, please contact Adrian Callard. If you would like to help at the hospitality table, please let me know. If you would like to help with security, please speak to Virgil Talbott. If you don't know where you'd like to volunteer, but want to help out,

please reach out to our Show Chairman, John Walker. If you do not have contact information for these folks, please let me know. You can reach me at

president@searchersrocks.org

and I will get you the contact information you need. There is one important thing we still need help with... please consider making donations for rough, and slabs to our silent auction. Our silent auction is one of the best at any show I've ever attended. In order for the silent auction to remain one of the best, we need some high quality rough and slabs to put out for auction. Steve Duncan is heading up the auction this year, please reach out to him and let him know you have donations.

Field Trip: Siam Siding and Latham Slade, Cadiz, CA. April 20 & 21, 2013

Leader: Steve Duncan

Siam Siding is famous for Chapenite, brecciated jasper. The shale cliffs above our campsite contain trilobite fossils; we will spend some time there showing everyone how to collect trilobites. We will be camping near Cadiz, directions to camp are below.

This is a dry camp, with no amenities. Bring what you need, including lots of water and sunscreen. Also bring something for the Sat night potluck. The trips will start at 0900 on Sat and 0830 on Sunday. Limited supplies and gas are available at Amboy (~8 miles from camp?).

Continue on page 2



Besides the show, we have other exciting things happening in the club. This month's field trip to State-line is sure to be a grand time. Check out all the details further in the newsletter. Also be sure to check out the upcoming general meeting speakers in the newsletter. If you have a field-trip you'd like to see happen or a speaker you'd like to see come to our general meetings, please let the board know. Remember, this is your club, and we are always interested in what our members would like to do, and see.

In closing, I wish you all a wonderful Easter and a fantastic April!

See you at the show,

Teri-Lynn



Field Trips

DATE	LEADER	LOCATION	STATUS
4/20, 21	Steve Duncan	Cadiz, CA	Scheduled
5/11, 12	Norbert Bernhardt	El Paseo Mountains, CA	Scheduled



For a more complete listing of shows go to website:

www.cfmsinc.org, www.motherlodemineralsociety.com/events.html

www.firemountaingems.com, www.southsunproducts.com

www.route66goldminers.org, www.auctionmasters.com

Th

Continued from page 1

Field Trip: Siam Siding and Latham Slade, Cadiz, CA

There is also a small motel there, which may or may not be open; there is a motel in Ludlow which is a bit further away. Remember to dress in layers, you will still want sunscreen and lots of liquid. Google maps say 3.5 hours from Orange to Chambless (right next to Cadiz).

Directions: Take 15 North to Barstow, then 40 East to Ludlow. Exit Ludlow, right at the bottom of the exit, then left at the stop onto Nat'l Trails Hwy (old route 66). Go East on Nat'l Trails Hwy past Amboy (this is the last gas and supply stop) to Chambless, turn right on Cadiz Rd. Cadiz Rd goes straight southeast for ~3 miles, and then bends sharply to the left. It goes a little less than a mile, and then turns right and crosses the tracks. DO NOT cross the tracks. You will turn left off Cadiz Rd onto a dirt road a couple of hundred yards before the turn towards the tracks. Camp is ahead a 1/4th mile. There should be Searcher signs at the turn off, and at camp. You should be able to see the vehicles at camp from the paved road. Any vehicle should be able to make it to camp, and to the collecting spots, although there is some dirt road driving.

Field Trip Leader: Steve Duncan at 714 724 7102, or email me at wsd@iteris.com

More Info on the April Field trip

Here are some more details on the actual collecting for this trip. The trilobite collecting is done on a steep hillside made of shale. There will probably be some old pits where others have worked before you. You will need to break out pieces of the shale, and then split them looking for trilobites. Some people like to split the shale using a paint scraper as a skinny chisel, and a hammer. I have found that just smacking the side of a plate of shale with the flat side of your rock pick will split shale pretty well too. Digging in the pits small shovels come in handy to shovel out debris, and sometimes small picks are good to break the walls. For the people who don't want to work that hard there should be a lot of previously shoveled shale which can be split, often revealing trilobites. The trilobites are fragile, so some bubble wrap to protect your specimens is handy, some people bring flat boxes (like from a case of water?) and lay there bubble wrapped specimens in the box for transportation down the mountain (and home). Depending on the weather it can get hot on the hill, so some shade (an umbrella?) comes in handy. Some folks go so far as to bring shade canopies up onto the hillside. This is kind of hard to lug up the hill but nice to have there.

For field trip

information contact:

David Nelson, V.P.

Field Trips, Searchers

Gem and Mineral

Society,

(714) 709-3242

(cell) or

dsnelsonsmorgan@

yahoo.com



April's Birthstone: Diamond

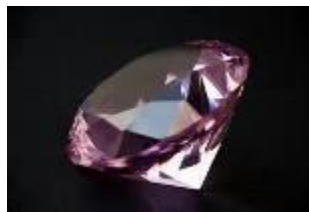
As the April birthstone, diamonds are the ideal gift for a loved one. And now you have more choices than ever. Get creative and give the ultimate gift of beauty: a fancy-color diamond. Fancy-color diamonds are natural, rare and truly exotic gem of the earth. Diamonds in hues of yellow, red, pink, blue, and green range in intensity from faint to vivid and generally the more saturated the color, the higher the value. In fact, diamonds sparkling with intense color are rare and may be priced higher than a colorless diamond of equal size. Because fancy-color diamonds are very desirable, color is sometimes introduced in a laboratory. These are correctly called color-treated diamonds. When purchasing a fancy-color diamond, the shopper should ask if any enhancements or treatments were used to improve its color and/or clarity.

In mineralogy, **diamond** (from the ancient Greek ἀδάμας – *adámās* "unbreakable") is a metastable allotrope of carbon, where the carbon atoms are arranged in a variation of the face-centered cubic crystal structure called a diamond lattice. Diamond is less stable than graphite, but the conversion rate from diamond to graphite is negligible at ambient conditions. Diamond is renowned as a material with superlative physical qualities, most of which originate from the strong covalent bonding between its atoms. In particular, diamond has the highest hardness and thermal conductivity of any bulk material. Those properties determine the major industrial application of diamond in cutting and



polishing tools and the scientific applications in diamond knives and diamond anvil cells.

Diamond has remarkable optical characteristics. Because of its extremely rigid lattice, it can be contaminated by very few types of impurities, such as boron and nitrogen. Combined with wide transparency, this results in the clear, colorless appearance of most natural diamonds. Small amounts of defects or impurities (about one per million of lattice atoms) color diamond blue (boron), yellow (nitrogen), brown (lattice defects), green (radiation exposure), purple, pink, orange or red. Diamond also has relatively high optical dispersion (ability to disperse light of different colors), which results in its characteristic luster. Excellent optical and mechanical properties, notably unparalleled hardness and durability, make diamond the most popular gemstone.



Club Meeting Activity

DATE	PRESENTER	SUBJECT
April 2013	Cancelled due to building maintenance	Cancelled
May 14	Herb Beckman	Safety & Equipment Demo
June 11	Conrad Grundke	Diamonds: Two Tales!

Upcoming 2013 CFMS Gem Shows



April 12 - 14: VISTA, CA

San Diego County Council of Gem & Mineral Societies
Antique Gas & Steam Engine Museum
2040 N. Santa Fe Avenue
Hours: 9 - 5 daily
Contact: Ray Pearce, (760) 726-7570

April 13 - 14: MARIPOSA, CA

Mariposa Gem & Mineral Club
Mariposa County Fairgrounds
Hwy 49 South (1.8 miles south of Mariposa)
Hours: 10 - 5 daily
Contact: Chel, (209) 742-7625
Email: mineralmuseum@sti.net

April 13 - 14: PARADISE, CA

Paradise Gem & Mineral Society
Elks Lodge
6309 Clark Road
Hours: Sat 10 - 5; Sun 10 - 4
Contact: Manuel Garcia, (530) 877-7324
Email: mmpg@att.net
Website: www.paradisegem.org

April 20 - 21: THOUSAND OAKS, CA

Conejo Gem & Mineral Club
Borchard Park Community Center
190 Reino Road (at Borchard Rd.)
Hours: 10 - 5 daily
Contact: Robert Sankovich, (805) 494-7734
Email: rmsorca@adelphia.net
Website: www.cgamc.org

April 20 - 21: SAN JOSE, CA

Santa Clara Valley Gem & Mineral Society
Santa Clara County Fairgrounds
334 Tully Road
Hours: Sat 10 - 6; Sun 10 - 5
Contact: Frank Mullany, (408) 265-1422
Email: info@scvgms.org
Website: www.scvgms.org

April 27 - 28: LANCASTER, CA

Antelope Gem & Mineral Society
Lancaster High School
44701 - 32nd Street West
Hours: 10 - 5 daily
Contact: CJ Quitoriano, (661) 209-9092
Email: cj_q_62@yahoo.com
Website: www.avgem.weebly.com

April 27 - 28: SANTA CRUZ, CA

Santa Cruz Mineral & Gem Society
Santa Cruz Civic Auditorium
Center Street & Church Street
Hours: 10 - 5 daily
Contact: Julia Cornblatt, (831) 687-0509
Email: scrzmgms@gmail.com
Website: www.scmgs.org

May 3 - 5: BISHOP, CA

Lone Pine Gem & Mineral Society
Bishop Fairgrounds
Sierra Street & Fair Drive
Hours: Fri 6 - 9; Sat. 9:30-5; Sun 9:30-3
Contact: Steve Mobley, (760) 793-6025
Email: steve@littlebearsteve.com

May 4 - 5: ANAHEIM, CA

Searchers Gem & Mineral Society
Brookhurst Community Center
2271 W. Crescent Avenue
Hours: Sat 10 - 5; Sun 10 - 4:30
Contact: John Walker, (503) 703-9465
Email: john_walker@juno.com
Website: www.searchersrocks.org

May 4 - 5: PASO ROBLES, CA

Santa Lucia Rockhounds
Pioneer Park & Museum
2010 Riverside Avenue
Hours: 9 - 5 daily
Kim Noyes, (805) 610-0603

Email: kimnoyes@gmail.com

Website: www.slrockhounds.org

May 4 - 5: YUCAIPA, CA

Yucaipa Valley Gem & Mineral Society
Scherer Center
12202 First Street
Hours: Sat 10 - 6, Sun. 10 - 4
Contact: Lee Peterson, (909) 794-0731
Email: res09ayd@verizon.net
Website: www.yvgms.org/wiki

May 11 - 12: RENO, NV

Reno Gem & Mineral Society
Reno-Sparks Livestock Event Center
1350 N. Wells Avenue
Hours: 10 - 5 daily
Contact: Steve Norman, (775) 358-7322, cell (775) 560-4782
Email: snorm11@hotmail.com
Website: www.renorockhounds.com

May 31 - June 2: VENTURA, CA

Annual CFMS SHOW & CONVENTION, "California Rocks" Sponsored by: Conejo, Oxnard, & Ventura Gem & Mineral Societies
Ventura County Fairgrounds, 10 W. Harbor Boulevard
Hours: Fri & Sat 10 - 5; Sun 10 - 4
Show Chair Rob Sankovich
Email: rmsoca@adelphia.net, (805) 494-7734



Come One Come All and Have Fun On a Saturday Night!

"Art Crawl Experience" or simply "ACE" is a visually invigorating, tastefully titillating, and an auditory explosive art walk and arts festival that takes place from 6pm to 10pm on the second Saturday of May, August and November in what has been acclaimed by local artisans as the Downtown Anaheim Arts District.

ACE was created by artists and community leaders with the intent of bringing arts and culture downtown by showcasing art in public places, street artisans, pop-up galleries, and the brick-and-mortar galleries.

The crawl stretches from Anaheim Blvd., to Harbor Blvd. and along Center Street Promenade. Art lovers can walk, crawl or climb aboard the Anaheim Resort Transit (ART) for complimentary rides throughout Anaheim's Art Crawl Experience.

Beth Pelfrey

Our Show is Coming, May 4th & 5th!

PLEASE REMEMBER THE SHOW IS COMING!! We will not have any general meetings prior to the show. Please keep your eyes peeled for emails regarding our Big Show on May 4th and 5th. **Immediate** needs are for volunteers in the following areas. Please contact the appropriate individual heading up each section to let them know you're signing up to volunteer:

KITCHEN HELP - Contact Adrian Callard at:

adricyn@hotmail.com

SECURITY HELP - Contact Virgil Talbott at:

virgil_talbott@roadrunner.com

HOSPITALITY HELP - Contact Teri-Lynn Wheeler at:

we34god@yahoo.com

GENERAL HELP - Contact John Walker at:

john_walker3@juno.com

DEMONSTRATORS - Contact Teri-Lynn Wheeler at:

we34god@yahoo.com

SILENT AUCTION DONATIONS - Contact Steve Duncan at:

wsd@iteris.com

SHOW CASE QUESTIONS - Contact Charlotte Spalding at:

miz_storm@sbcglobal.net

VENDOR INFO - Contact Kim Erb at:

campbellsrocks@gmail.com



Recap of the March 12, 2013 Searchers Meeting

We need a volunteer librarian. The librarian doesn't have to do a lot, mostly just be at Searchers meetings to help members check books in and out.

Also, does anyone have any Searchers-interest books to donate to the library?

If you want to present a display case at our show, there's one space left. See Charlotte Spalding. (You'll need to bring your own case, and your dues must be paid up.)

We were planning to have a table at the show where Searchers members could sell their own goods, but not enough people have signed up yet. So we'll get a vendor for the table this year, and try again next year. Show volunteers are needed, especially for the kitchen, security, and Sunday take-down.

Our March speaker was Justin Zzyzx, who gave a presentation on sites in the local LA Basin area where we can find good rocks. For example, there are several sites near the Angeles National Forest, near Griffith Park, and in the Santa Monica mountains. Minerals at different sites include quartz, basalt, geodes, agates, boron, and rubies.

Justin also had copies of his book, *The-Vug.com*, for sale. This book is a compilation of the 2008-2011 issues of *The-Vug.com* quarterly magazine about mineral collecting.

all apps to the Searcher mail box and I will get them.



Searchers Scholarship for 2013

Searchers, please be aware that we are offering a scholarship again this year for a deserving geoscience student. At the moment, we do not have an application form available on the website but I will make one available at the meeting and in this Rock Slab News. If you are a student interested in the study of the geosciences, live in Orange County or the immediate area or are related to a member of this club either you yourself or through a family member, please contact me. An application form will be published next month.

The committee will accept and review each application, determine the candidates to interview and award the scholarship by the Fall. If you are or you know a qualifying high school senior, Community or college freshman who is planning a career in any of the geosciences, please alert him/her to this opportunity.

The deadline this year is **July 1** in my hands, by snail mail, please. Thanks for caring. Please send all apps to the Searcher mail box and I will get them.

Beth Pelfrey, Chair, Scholarship Committee

P.O. Box 3492

Anaheim, CA 92803



Searchers Gem & Mineral Society

General Information



Check our website for unexpected changes in schedule!

www.searchersrocks.org

General Meetings: 7 PM, 2nd Tuesday of each month, Jan - Nov

Board Meetings: 6PM, 1st Tuesday of each month, Jan - Nov

Workshop: Thursday, 6 – 10 PM, free wire-wrap class.

Saturday, 3 – 7 PM Free silver-smithing class 1st, 2nd, 3rd Saturdays (schedule varies).

Location: Anaheim Downtown Community Center
250 East Center St.
Anaheim, CA 92805

Mailing Address: Searchers Gem & Mineral Society, Inc.
P.O Box 3492
Anaheim, CA 92803

Website: www.searchersrocks.org

Membership Dues:	Individual	\$25
	Couple	\$35
	Junior (17 & under)	\$10

Valid Jan.1-Dec.31, not prorated

Bulletin: Submissions due 3rd Friday of the month via e-mail to: editor@searchersrocks.org.

Bulletin distributed 1st week of each month. Mail exchange bulletins to the editor:

Yery Camacho

13900 Studebaker Rd, #4

Norwalk, CA 90650

Charter Date: April 20, 1958

Affiliations: California Federation of Mineralogical Societies



**The Agateer Lapidary Supply**www.theagateer.com

(657) 464-0400

Licensed Dealer

Saws, Diamond Saw Blades – Cutting Oil – Dressing Sticks
Cabbing Machines – Diamond Wheels – Dop Supplies
Tumble-Bee Tumblers, Grit Kits, Tumbling Media

Free Delivery within Orange County for orders over \$150

PtCreations

2812-B Walnut Ave.

Tustin, Ca 92780 714-904-2181

www.ptcreations.net**THE NEVADA MINERAL & BOOK COMPANY**<http://minbooks.net/>

342 S. Tustin Street • Orange, CA 92866

Ph. 714-633-1549

Rusty's Gold & Treasure Hunting Supply

Club members show your ID card and receive a 10% off purchases over \$100

Authorized dealer for Garrett, Fisher, and Tesoro metal detectors

5642 E. La Palma Ave., #208, Anaheim, CA 92807 (corner of La Palma and Imperial Hwy.)

714 693-GOLD (4653). Store hours: Tu - Sat 10am - 6pm