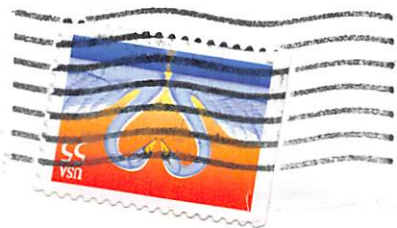
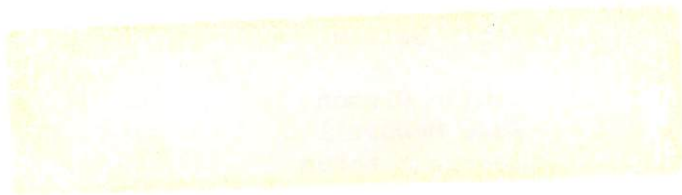


3-1998



P.O. BOX 3492  
ANAHEIM, CA 92803





SEARCHERS GEM AND MINERAL SOCIETY, INC  
Established June 20, 1958

Mailing Address: P O Box 3492  
Anaheim, CA 92803

CLUB OFFICERS

President	Cliff Warner	472-2083
1st Vice President	*Audrey Nichols	533-4675
	*Betty Nelson *Co-Chairs	530-1365
2nd Vice President		
Secretary	Louise Oleson	(562) 930-0989
Treasurer	Faye McDowell	(562) 597-7684
Federation Director	George Mitchum	897-2407
Director	Herb Beckman	778-1496

COMMITTEE CHAIRPERSONS

Historian	Jan Gillette	776-9467
Anaheim Arts Council	Margaret Neeley	535-2030
Arts Council Alternate	Mae Freedman	774-6665
1998 Show Chairman	Milt Green	456-0550
1998 Co-Show Chairman	Jim Williamson	995-9080
Bulletin Editor	Marge Jordan	897-2407
Bulletin Editor Alternate	Audrey Nichols	533-4675
Bulletin Mailout	Janet Cole	639-9025
Membership	Milly Arvanites	838-1924
Public Lands	Max Johnson	535-8579
Refreshments/Hospitality	Nancy Norland	960-6957
Sunshine	Doris Pelfrey and Froma Reiter	774-2754
Silent Auction	Jerry and Nancy Norland	960-6957
Veterans Coordinator	Larry Richey	846-3573
Library	Bob Dixon	534-5063
Monthly Drawing	Jerry and Nancy Norland	960-6957
Meeting Host		
Phone Committee	Marge Jordan	897-2407
Social Director	Beth Pelfrey	774-2754
Workshop	Herb Beckman	778-1496

AFFILIATIONS: California Federation of Mineralogical Societies  
American Federation of Mineralogical Societies

The Searchers Gem and Mineral Society, Inc. regular meetings are held on the second Tuesday of each month on the basement level of the Anaheim Memorial Hospital Medical Office Building, 1211 W. LaPalma Avenue, Anaheim, CA. Meetings begin at 7:30 PM. Visitors are always welcome.

Membership dues are accepted January thru September. Adult Members: \$10.00 each, and Junior Members (under age 17) \$2.00.

Board Meetings are held on the fourth Tuesday of each month January through October and the third Tuesday in November and December. The meetings are held in the basement level Boardroom of the Anaheim Memorial Hospital Medical Office Building at 7:30 PM.

Field Trips are usually held on the second weekend of each month. These are announced monthly. Trip maps, added activities, time changes and other pertinent information will be published in the bulletin.

WORKSHOPS: 651 South State College Blvd, Unit # 9, Fullerton. Thursday 6:00 PM to 10:00 PM. Phone Number: (714) 870-7625.

REQUIREMENT: Items for the Bulletin must be in the hands of the editor by the first (1st) Tuesday of each month. Please mail all items to: Marge Jordan, 12161 Bartlett Street, Garden Grove, CA 92845-1525

PRESIDENT'S MESSAGE

Good News! The weathermen say the most severe of the El Nino storms have passed. There has been a great deal of damage caused by mud slides, earth slides, overflowing rivers and streams. The stream that runs through the golf course behind my house has doubled its width, claimed several large trees and damaged the putting green on the fourth hole. Everywhere you look you can see the changes brought about by El Nino.

The damage is not only to residential areas but also to the forests and undeveloped regions of the state. This natural erosion has moved thousands of tons of soil and rock. Areas that once were good rock collecting areas may no longer exist. On the other hand areas that once were good rock collecting areas but have been picked clean may be producing new and better specimens. El Nino may have brought the best specimen collecting opportunities in years so lets all get out there and start checking the collecting areas for that once in a life-time specimen.

CLIFF WARNER  
President



FUTURE CLUB ACTIVITIES:

- March 10th      General Meeting
- March 20th thru 22nd    Field Trip - Victor VALley 22nd Annual Tailgate
- March 24th      Board Meeting
- April 7th        Bulletin Items due
- April 14th      General Meeting



SHOW DATES:

- Mar 14 - 15      Pasadena Lapidary Society  
Masonic Temple  
3130 Huntington Drive  
San Marino, CA  
Hours: 10:00 AM to 6:00 PM Saturday  
         10:00 AM to 5:00 PM Sunday
- Mar 14 - 15      Northrop Grumman Gem and Mineral Club  
NRGC Clubhouse  
12395 Crenshaw Blvd - Gate 16  
Hawthorne, CA  
Hours: 10:00 AM to 6:00 PM Saturday  
         10:00 AM to 5:00 PM Sunday



SHOW DATES (Cont'd):

- Mar 28 - 29 San Diego Mineral & Gem Society  
Al Bahr Shrine Temple  
5440 Kearney Mesa Road  
San Diego, CA  
Hours: 10:00 AM to 6:00 PM Saturday  
10:00 AM to 5:00 PM Sunday
- Mar 28 - 29 South Bay Lapidary and Mineral Society  
Torrance Recreation Center  
3341 Torrance Blvd  
Torrance, CA  
Hours: 10:00 AM to 6:00 PM Saturday  
10:00 AM to 5:00 PM Sunday
- Mar 28 - 29 North Orange County Gem and Mineral  
LaHabra Clubhouse  
200 W. Greenwood  
LaHabra, CA  
Hours: 10:00 AM to 6:00 PM Saturday  
10:00 AM to 5:00 PM Sunday
- Apr 4 - 5 Mojave Mineralogical Society  
Boron High School Multi-Purpose Room  
Boron, CA  
Hours: 9:00 AM to 7:00 PM Saturday  
9:00 AM to 4:00 PM Sunday
- Apr 17 - 19 Las Vegas Gem Club  
Henderson Convention Center  
200 Water Street  
Henderson, NV  
Hours: 10:00 AM to 6:00 PM Fri, Sat and Sun



California Federation of Mineralogical Societies  
Presents the 59th Annual  
**MINERAL AND GEM SHOW**  
at the Monterey Fairgrounds  
in beautiful Monterey, California  
**July 3, 4, and 5, 1998**

HIGHLIGHTS - FEBRUARY 1998 GENERAL MEETING:

Meeting called to order by President Cliff at 7:35 PM.

Visitors and new members were introduced. Jerry and Nancy Norland volunteered as Chairpersons for Refreshments/Hospitality, Monthly Drawing and Silent Auction and, Karen and Manny Sandico volunteered to do Ribbons and Trophies for our Annual Show in May.

Cliff presented a detailed report on Workshop Budget for the year indicating that we now have an idea of what costs will be and reported that the Board had discussed the possibility of purchasing 2 new Genies which will be discussed by the Board at future Board meetings.

HIGHLIGHTS - FEBRUARY GENERAL MEETING (Cont'd):

Herb reported that attendance at the workshop was up due to the turnout of members who helped to inventory stored materials and that lapidary projects were getting completed. He also announced that arrangements have been made for three wire-wrap classes to be held March 7th and 21st and April 4th at the Anaheim Memorial Hospital Medical Office Building meeting rooms where lighting, chairs, air conditioning are better than in our workshop. Sign-Up Sheets for the Wire Wrap Classes will be circulated this evening. David Gough will be the instructor. Tools will cost approximately \$25.00 and supplies \$15.00

Milt Green, 1998 Show Chairman announced that all Committee Chairpersons have been filled. Margaret Neeley will need someone to help with the Friday night dinner since Mary Jane had to cancel due to another commitment. Chairpersons will be circulating clip boards at the next General meeting. They will be needing many volunteers to help with the various jobs. Flyers were distributed at Quartzsite every member was asked to do their share and pass out flyers whenever possible. Show time will be here before we know it. Our Donation Award Tickets will be available for pick up at the March General Meeting.

Cliff reported that everyone who participated in the January 24th Field Trip to the G & M Garnet Mine in the Anza Borrego area found garnets. The weather was perfect and about 10 people made it down to the collecting area. If there is enough interest we could possibly schedule another trip there, however, weather is an important factor.

Max Johnson displayed samples of verde antique, tri colored marble, black jade with magnetite, verde antique with magnetite that will be available at the Victor Valley (Stoddard Wells) tailgate on March 20th through 22nd. Max said the verde antique with magnetite will gold plate and also the black jade with a high polish will gold plate. Max also displayed samples of garnet that was found during the January field trip.

Milly Arvanites reminded everyone that the 1998 Dues are Due and to please pay them this evening or as soon as possible so that your names will be published in the 1998 Membership Roster to be distributed at our March General Meeting.

Betty and Harry Nelson presented our program for the evening showing slides of California Route 49 to include the Gold Country, Solvang and Yosemite.

Meeting adjourned at 9:35 PM.

Louise Oleson  
Secretary

SLABS FOR VETS:

If you are running your saw and have any extra slabs please bring them to our General Meeting and drop them in the box marked "SLABS FOR VETS" located on the table in the back of the meeting room.

Larry Richey

ITEMS FOR APRIL BULLETIN:

I would like all items for the April Bulletin NOT LATER THAN April 7th.

Marge

BOARD MEETING, 25 FEB 1998:

Meeting called to order by Cliff at 7:35 PM. Six Board Members attended and three visitors.

January minutes read and approved. Treasurers report read and accepted. It was decided to delay audit of the books until a time could be worked out when our Treasurer would not need access to the Club records to conduct current business. Re January minutes Marie Cole will arrange for the audit.

Audrey Nichols and Betty Nelson announced that the Annual Christmas Dinner and Installation of officers will be held on December 11th, 1998 at the Garden Grove Elks Club. The menu will be Prime Rib w/au jus sauce and Roast Turkey w/all the trimmings and a vegetable plate for wnyone who requests one. Dessert is not included but the Club will furnish if it is felt it is necessary. All of those present expressed their appreciation to the ladies for their expediency and thoroughness in arranging this event on a date that is not easy to schedule this time of year.

Cliff announced that Max Johnson will be our Public Lands Chairperson. Herb requested volunteers to review the "Mineral Collecting Act of 1998" and send comments to the American Lands Access Association. Cliff and Audrey accepted.

Herb reported that the recently donated Lortone LS14 (14" dropsaw) donated by friends of Milt and Millie has been reconditioned and is running very well. This diamond saw can do things that a mechanical, gravity, or hydraulic linear feed saw can not do and will likely get a lot of use in the shop. Marvin Mog has overhauled the Great Western 24 inch saw. He overhauled and changed the oil in the hydraulic cylinder, and hammered the blade as suggested by George Mitchum, and the saw works very well.

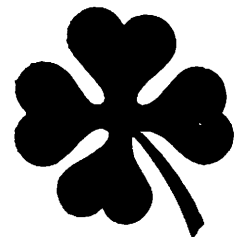
George Mitchum asked Herb to elaborate the arrangements concerning the auctioning of equipment that had been donated, whether or not this had been discussed with the donors. Discussion followed concerning the surplus equipment.

Show Chairman, Milt Green reported that Lifeline Security will furnish security at the show and will furnish an armed guard. The cost will be \$770 and they have requested twenty-five percent of their payment in advance to be submitted with the signed contract. Board reaction was favorable. Milt said that another top priority is Publicity. Flyers will be distributed at the March meeting for members to take and hand out. Milt asked that all members invite 10 people to our May show.

Herb inquired on the status of a planned updating of the secretary's job duties to include information be given to the state to assure the Club can maintain our non-profit status. No action taken.

Meeting adjourned at 9:44 PM.

Louise Oleson  
Secretary

MEMBERSHIP:

Welcome to five new members who joined at our February meeting. They are: Dorothy and Adrian Bartlow, Irene and Edward Lindsay and David Sobel.

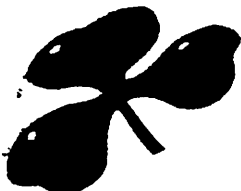
If I did not receive your dues by March 1st I have had to leave your names off the new '98 Membership Roster. The new Rosters will be distributed at the March Meeting.

Milly Arvanites

ALAA RECOGNIZED:

During the recent AFMS 50th Anniversary Meeting in Jackson, Mississippi, Oct 1997, the AFMS recognized the American Lands Access Association (ALAA) as their lobbying arm, but this recognition came with no monetary funds being forwarded from the AFMS. At the present time, the ALAA have two bills that have been sent to the Congress of the United States. These are the Fossil Bill and the Rock and Mineral Act. At this time ALAA is trying to get these introduced into the Senate and House of Representatives. I have been informed that there will be a mailing from the ALAA President Jon Sponaogle to all clubs in the AFMS, with an explanation of the Wewer Letter, which was paid for by ALAA, and is a legal explanation of what clubs can do monetarily and personally toward lobbying. The ALAA and AFMS encourages everyone to write to their Representatives in the Senate and House of Representatives to ask for their support of these bills.

Dee Holland  
AFMS President  
via AFMS Newsletter, Mar 1998

RADIOACTIVE STONE WARNING:

It is reported from Thailand that there are dangerously radioactive brown cat-eye stones circulating in the world. The radiation level is reported as over 50 times more than allowed by U.S. law. They have apparently been bombarded with radiation in a nuclear reactor in order to change them from yellow to the much more valuable brown. Indonesia is believed to be the source of the stones. The altered stones sell for very high prices. It is recommended that one not buy brown cats-eye stones without checking them for radioactivity.

via AFMS Newsltr, Mar 1998

THANKS FROM CFMS HISTORIAN:

Shirley Leeson, CFMS Historian, sent a note of thanks to our Wes Greenamyer who sent her two items for inclusion in the CFMS history. The items, a perfect copy of the 5th Annual CFMS Convention program held in Santa Barbara in 1940 and the 20th Annual Convention program, held in San Mateo, CA in 1959.

Wes has been a rockhound for nearly 50 years, beginning as a junior in the Compton Gem and Mineral Club, joined the Westside Mineralogists and is currently a Searcher member.

If there are any other Searcher members who may have something of CFMS historical value please let Shirley Leeson know.

George Mitchum  
Federation Director

SHOP TIP:

Mineral oil is an excellent cleaner for selenite crystals. It seems to loosen the little tiny particles left after washing in water and it brightens them too. It has several other uses: It makes variscite a deeper green, and improves the appearance of florites and calcites.

via Rocky Review, 3/98 and others

SHARING AND CARING:



I'm sorry to inform you that Mae Freedman has broken an ankle and will be confined for a short time at the Gordon Lane Convalescent Hospital. Mae was doing so well after her medical problems and certainly didn't need this to happen. We sincerely hope Mae that your recovery is a speedy one and you will be walking on that ankle soon.

Anyone wishing to send cards or notes the address of the Gordon Lane Convalescent Hospital is:

1821 East Chapman  
Fullerton, CA 92831

Froma Reiter will Co-Chair Sunshine with me, so please, if you have any illness, hospitalization, accident or death to report please notify me or Froma. Froma may be reached by calling (714) 879-3514.

Doris Pelfrey

REFRESHMENTS:

Welcome back to former member, Nancy Norland. Nancy has not only rejoined the club but has volunteered to coordinate refreshments for this year.

Nancy will be looking for volunteers for the months May through November. Please give her a call and sign up. You can reach her at (714) 960-6957.

Refreshments this evening will be served by Marie Cole and Doris Smith. April's refreshments to be served by Margaret Neeley and Charlotte Bluell.

Marge



HOORAH FOR VOLUNTEERS:

I'm happy to report that in addition to Refreshment Chairperson, Nancy and husband Jerry (new member) Norland will do the Silent Auction and the Monthly Drawing. Also, Max Johnson will be our Public Lands Chairperson. My thanks to all of you.

Cliff Warner



PROGRAM REPORT:

Our program this evening will be presented by Corliss Rose who will speak on Intarsia, Carving, Silver Smithing and gems.

Max Johnson will be doing the April program and Manny Sandico will discuss silver and gold at our May meeting.

We have arranged for our Annual Christmas dinner to be held December 11th at the Garden Grove Elks Club. We would like to know if there is a Searcher member or their relative who is a member of the Elks (locally). Please let us know. This would save us an extra charge.

Audrey Nichols  
Betty Nelson



WORKSHOP REPORT:

Workshop attendance in February was marginal because many Searchers were attending the shows at Quartzsite and Tucson. The Searchers workshop will be available for your creative efforts from 6:00 PM to 10:00 PM Thursdays on March 5, 12, 19th and 26th, and April 2nd and 9th. Many beautiful cutting materials have been found among the donated rocks at the workshop and are available for workshop attendees to use. We still need help from volunteers to help us sort through donated cutting material prior to the Stoddard Wells tailgate. If you can help, please contact me at the March meeting.

We are making plans for the workshop move into the new Senior Center later this year. George Mitchum reports that the dedicated storage and workshop space at the new facility will be 750 square feet.

Arrangements for the classes in wire wrapped jewelry are completed. The three class sessions will be held in Classroom "A" in the Anaheim Memorial Medical Office building (adjacent to the basement meeting room) from 8:00 AM to 12:00 noon on March 7th and 21st and April 4th, 1998. This location was selected over the workshop for these classes for convenience and comfort.

Ben Byland, another very talented wire wrap instructor has volunteered to assist Dave Gaugh in teaching this class, thus we will be able to accommodate three or four more students in these class sessions. If you are interested. If you are interested, you can sign up at our March meeting. The cost of tools will be considerably less than the \$30.00 previously estimated. However, the materials cost (gold filled and/or silver wire) estimate is still \$15.00 which will cover fabrication of a ring, a pendant or a bracelet. Students should provide their own cut stones.

In February the workshop received equipment and materials donated by Carl Pitzler. The lapidary equipment, a 16" drop saw, and a two disc diamond cutting outfit, designed and home made by Mr Pitzler are surplus for the workshop and will be auctioned. Mr Pitzler is agreeable to this, as his primary interest is to find a good home for this equipment where it will be appreciated and used. This is an excellent opportunity for a new member to acquire an instant lapidary workshop at very reasonable cost. The lapidary materials have not yet been sorted, however, many of them are from collecting areas visited by Searchers since 1966 which are no longer accessible. We certainly thank Mr Pitzler for his generosity.

A reminder, Searchers library materials are available for checkout at the Searchers facility on workshop nights. Remember, we now have much quality material for workshop attendees to use, and individual lapidary instruction is provided. I hope to see more of you, especially new members, attending our upcoming workshop sessions.

Herb Beckman

FIELD TRIPS:

Our March 20-21-22, 1998 trip will be to the 22nd Annual Tailgate on Stoddard Wells Road out of Victorville. Milly Arvanites said there is a corned beef and cabbage dinner planned for Saturday evening the 21st. This will be a potluck so bring a dish to share. See map on page 10.

Plans for the April field trip will be announced later.

Cliff Warner

EXTENDED FIELD TRIP INFORMATION:

This year the extended field trip will be in Utah (May 23rd to June 1st). This information is provided to help those who wish to go on the trip to plan accordingly.

- Start - Beaver United Campground, Exit 109 on I-15, Beaver, Utah.  
Arrive May 23rd for 3 nights. Earlier if you desire. Field trips on May 24 and 25.
- May 26 - Move to Capitol Reef National Monument Campground, Highway 24, or nearby Torrey-Thousand Lakes RV Park if Capitol Reef is full. Stay 2 nights, May 26 and 27. Field trip on 27th.
- May 28 - Move to Hanksville, Highway 24. Red Rock Campground, 3 nights. Field trips on May 29 and 30th.
- May 31 - Move to dry camp on Highway 24 toward Green River, one night. Field trip, afternoon of May 31st.
- June 1 - Move to Green River, Utah, I-70. Green River United Campground. Field trips, June 2, 3, 4 and 5. Stay as long as you like. End of extended field trip, June 6th.

Any questions??? Call Marvin Mog at (714) 774-6374

Marvin Mog

SHOW REPORT:1998 SHOW COMMITTEE

Chairman	Milt Green	633-6505	Hospitality	Marge Jordan	897-2407
Co-Chairman	Jim Williamson	995-9080	Hourly Door Prizes	Marie Cole	639-7983
Anaheim Arts Council	Margaret Neeley	535-2030	Kitchen	Mike & Michele Lee (909)	674-7223
Cases	Walter Mroch	826-2132	Lay-Out	Max Johnson	535-8579
Children's Jewelry	Bob Gabourel	670-6786	Membership	Betty Henderson	772-1996
" "	Marvin Mog	774-6374	Publicity	Beth Pelfrey	774-2754
Crafts	Doris Smith	639-9025	"	Herb Beckman	778-1496
Dealers	Milly Arvanites	838-1924	Security	Larry Richey	846-3573
Decorations	Trudie Reed	637-8067	Set-Up & Clean-Up	Everyone/Volunteers	
Demonstrations	Floyd Neeley	535-2030	Signs-Inside	Hal & Beth Pelfrey	774-2754
Donation Awards	Roger & Jan Cole	639-9025	Signs-Outside	Jay & Roger Cole	639-7983
Electrical	Jim Everitt (909)	679-5580	Special Exhibits	Herb Beckman	778-1496
Financial	Faye McDowell (562)	597-7684	Programs/Displays	Connie Van Kampen	993-2827
Friday Night Dinner	Margaret Neeley	535-2030	Trophies & Ribbons	Karen & Manny Sandico	952-0330
Grab Bags	Ken Landers	535-5126	Wheel of Fortune	Lola Tapia	776-9815
			Show & Workshop Video	Dick Reed	527-2480

SIGN-UP SHEETS:

For us to have a successful show we need all members to help. Sign-up sheets for all show jobs will be circulated at March and April meetings so please sign up and help these chairpersons. Now is the time to sign up to get your choice of time and/or job. If you are unable to attend the meeting give the Chairperson a call and sign-up. GET INVOLVED - HELP OUT - SEE HOW MUCH FUN IT IS TO BE PART OF THIS ONCE A YEAR EVENT!!!

Milt Green

Show Theme for our 39th Annual Show - "Enjoying Treasures of the Earth"

SHOW INFORMATION:DONATION AWARD TICKETS AND PRIZES:

We have Donation Award Tickets available for pickup this evening. The sale of these tickets is our BIGGEST and ONLY fun raising project for the Club for the year. It is the obligation of each member to either sell or buy himself/herself \$10 worth of tickets. Tickets are 3 for \$1.00. REMEMBER THIS helps the Club with expenses throughout the year. The more YOU SELL the more YOU help YOUR Club. Please pick up your \$10 worth tonight. If we have to mail them to you postage gets expensive. Make checks payable to "Searchers Gem and Mineral Society." All monies and ticket stubs are to be returned to Roger Cole by show time, May 2nd.

First Prize will be \$200. All other prizes will be donated by Searcher members or businesses.

We need Donation Award Prizes. These prizes should be high quality (remember, when selecting your donation prize please be sure that the image we project is the one we are proud of). These prizes may be brought to the General Meeting and given to Roger and Jan, or, during set-up time, Friday, May 1st.

Any member who may be contacting business people for Donation Award Prizes there are copies of Donation Request letters available for your use. Also, Show Flyers. Please check with Milt Green.

Don't forget, pick up your \$10 worth of tickets so we won't have to mail them to you - postage is expensive. Let's have a record ticket sale in 1998!

Roger and Jan Cole

HOURLY DOOR PRIZES:

We need donated items for our Hourly Door Prize drawings. Gals and Guys, clean out your stash of UNUSED ITEMS. These could include necklaces, key chains, bracelets, pins, earrings, bangles, etc., etc. Please, if you have any suitable items bring them to the April meeting and to set-up Friday morning.

Marie Cole

WHEEL OF FORTUNE:

Prizes are needed for the WHEEL. If you have any polished rocks, slabs, tumbled stones, geodes (cut ones) small vials of tumbled rock or other items that would be attractive to children (or adults) please bring them to the April meeting or bring them to set-up on Friday morning.

Lola Tapia

SHOW SECURITY:

To help ensure the trouble-free operation of our show, all members are urged to conspicuously wear their club badge whenever they are at the show site. Searchers must also make sure that any non-members they designate to help them set-up or take down displays be clearly identified by a ribbon/badge, available at the show site from Larry Richey.

Members needing to order a new or replacement Club badge should contact George Mitchum ASAP at the general meeting or give him a call at (714) 897-2407. The cost is \$5.00.

Larry Richey

PLANTS:

If you plan on donating plants for the Show now is the time to start getting them ready. Please bring them to the Center Friday morning during set-up.

Milly

