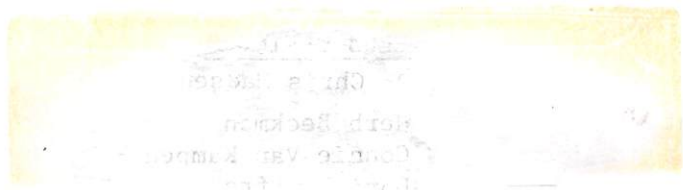


5-1995





SEARCHERS GEM AND MINERAL SOCIETY, INC.

Established June 20, 1958

Mailing Address: P. O. Box 3492, Anaheim, CA 92804

CLUB OFFICERS

President	Dr Chris Madsen	535-2936
1st Vice President	Herb Beckman	778-1496
2nd Vice President	Connie Van Kampen	993-2827
Secretary	Doris Pelfrey	774-2754
Treasurer	Betty Nelson	530-1365
Federation Delegate	Elmer Parsons	870-5495
Director	Jim Williamson	995-9080

COMMITTEE CHAIRPERSONS

Historian	Jan Gillette	776-9467
Anaheim Arts Council	Margaret Neeley	535-2030
Arts Council Alternate	Mae Freedman	774-6665
1995 Show Chairman	George Mitchum	897-2407
1995 Co-Show Chairman	Floyd Neeley	535-2030
Bulletin Editor	Marge Jordan	897-2407
Bulletin Editor Alternate	Jeanne Howe	529-3613
Bulletin Mailout	Nancy Reed	527-2480
Membership	Milly Arvanites	838-1924
Public Lands	Elmer Parsons	870-5495
Refreshments	Jeanne Howe	529-3613
Sunshine	Froma Reiter	879-3514
Sunshine Alternate	Doris Pelfrey	774-2754
Veterans Coordinator	Larry Richey	846-3573
Monthly Drawing	Floyd Neeley	535-2030
Meeting Host	Bill Keyes	535-1484
Phone Committee	Marie Cole	639-7983

AFFILIATIONS: California Federation of Mineralogical Societies  
American Federation of Mineralogical Societies

The Searchers Gem and Mineral Society, Inc. regular meetings are held on the second Tuesday of each month on the basement level of the Anaheim Memorial Hospital Medical Office Building, 1211 W. LaPalma Avenue, Anaheim, CA. Meetings begin at 7:30 PM. Visitors are always welcome.

Membership dues are accepted January thru September. Adult Members: \$10.00 each, and Junior Members \$2.00 each.

Field Trips are usually held on the second weekend of each month. These are announced monthly. Trip maps, added activities, time changes and other pertinent information will be published in the bulletin.

Board Meetings are held on the fourth Wednesday of each month, basement level Boardroom of the Anaheim Memorial Hospital Medical Office Building at 7:30 PM.

WORKSHOPS: Workshops have been temporarily cancelled.

REQUIREMENT: Items for the Bulletin must be in the hands of the editor by the first (1st) Tuesday of each month. Please mail all items to: Marge Jordan, 12161 Bartlett Street, Garden Grove, CA 92645-1525.

PRESIDENT'S MESSAGE

By the time you read this bulletin, our 36th Annual Searcher Gem Roundup will be history -- and from what I've seen of the effort on behalf of the club by many individuals, it should be a pleasant memory of a successful show. I would like to thank the many people who, year after year, work tirelessly on this event.

I would also like to thank the people -- in particular the Pelfreys and Herb Beckman and those who have been working on the Christmas Dinner -- their results have been outstanding. We already have a facility for the dinner - the Fullerton Elks Club, a large room of our own, and an excellent menu -- best of all, for a price that we should all be able to enjoy. This promises to be an excellent dinner, made possible by the early and aggressive efforts by our Christmas Party Committee.

Unfortunately, not all the news from the past 30 days has been good. We have lost two long time members who have always been very active in our club, always very visible -- the people who make things happen -- their contributions to the Searchers are irreplaceable.

I speak first of the loss of George Arvanites, and then a few days ago, of Bill Keyes. The Searchers are less for the loss of these two great gentlemen. This loss can only be ameliorated by learning, through their example, of what it really means to be a Searcher, a friend, and a leader, as they demonstrated so well.

L. C. Madsen, MD

FUTURE CLUB ACTIVITIES:

May 9th	General Meeting
May 24th	Board Meeting
May 26th	Field trip to Cima Road - Extended to several areas in Utah (thru June 10th for those interested)
June 13th	General Meeting - Our Annual Awards/Potluck

SHOW DATES:

May 19 - 21	Palomar Gem & Mineral Club Valley-Rose Plaza (The Vinyard) 1529 E. Valley Parkway Escondido, CA Hours: Fri & Sat 10 - 6 Sun 10 - 5
May 20 - 21	Yucaipa Valley Gem & Mineral Society Yucaipa Community Center First & Avenue "B" Yucaipa, CA Hours: Sat 10 - 6 Sun 10 - 5

SHOW DATES (Cont'd):

- May 20 - 21      Conejo Gem & Mineral Club  
Borchard Park  
190 Reino Road  
Newbury Park, CA  
Hours: Sat - 9 - 5 Sun 10 - 5
  
- June 3 - 4      Rockatomics GEm & Mineral Society  
8500 Fallbrook Avenue  
West Hills, CA  
Hours: Sat 10 - 6 Sun 10 - 5
  
- June 3 - 4      Glendora Gems  
Goddard School  
859 E. Sierra Madre Blvd  
Glendora, CA  
Hours: Sat 10 - 7 Sun 10 - 4
  
- July 8 - 9      Culver City Rock & Mineral Club  
Veterans Memorial Auditorium  
Corner of Overland & Culver Blvds  
Culver City, CA  
Hours: Sat 10 - 6 Sun 10 - 5

# NATURE'S SURPRISES 1995

Gems

Jewelry

Fossils



**California Federation**  
Mineralogical Societies  
56th Annual  
Show & Convention  
**June 23, 24, 25, 1995**

Minerals

Programs

Demonstrations

**Time:**

Friday 10:00 am to 6:00 pm

Saturday 10:00 am to 6:00 pm

Sunday 10:00 am to 5:00 pm

**Santa Clara County Fairgrounds**  
334 Tully Road, San Jose, CA

**Admission:**  
\$4.00 Adult  
Children Under 12-  
(free with adult )

Hosted by: Santa Clara Valley Gem & Mineral Society

HIGHLIGHTS APRIL GENERAL MEETING:

Dr Madsen asked that members who speak or do demonstrations at schools and community functions in Anaheim and surrounding areas to please sign the Time Donation Roster since this will help our tax exempt status.

Margaret Neeley would like help with the Searcher case for the Arts Council Show in the City Hall. If you can help give Margaret a call.

Volunteers will be needed for the Orange County Fair, see the bulletin for more information or call Todd Schwoalter. Todd has invited Searchers to the Costa Mesa Show where we will have a table available for us to give out information on our club and recruit new members.

It was announced that former member and past Program Chairman (1992), Jorge Hurtado passed away March 25th. Jorge had been in poor health for several months.

Information concerning the May/June field trip and extended trip will be in the April and May bulletins. Marvin Mog will be your leader. Marvin mentioned there is free parking at Stateline, NV for anyone who would like to venture there on the "free day" (May 29th). The field trip will begin Friday May 26th at Cima Road.

Harry and Betty Nelson gave a wonderful slide and music show of the desert as we used to know and love it. With the closure of the desert we may never get to visit these lovely places again. Board members have asked that all of us write our legislators and demand our rights of access to our collecting areas. DO NOT DELAY... WRITE THAT LETTER!

Refreshments were served by Mary and Lowell Disney.

Doris Pelfrey

IMPORTANT NOTICE FOR ALL MEMBERS:

Due to a special event at Anaheim Memorial Hospital the room that we normally meet in will not be available the evening of October 10th therefore it will be necessary to change our October general meeting to the first Tuesday, October 3rd. Please note this change on your calendars. This is the October meeting only. Our November meeting will be on Tuesday, November 14th as scheduled.

L. C. Madsen, MD

NOTICE:

There will be NO BULLETIN FOR JUNE due to the May/June field trip. All items normally printed in the June bulletin will be consolidated in the July bulletin. All items for the July bulletin must be submitted to me NOT LATER THAN JULY 5th.

Marge

MEMBERSHIP:

Welcome to new members:

MICKEY, Ted  
 810 West Collins  
 Orange, CA 92667  
 (714) 778-5623

SILVAIN, Tony  
 SILVAIN, Elizabeth  
 2220 N. Redwood Drive  
 Anaheim, CA 92806  
 (714) 535-4924

Renewal Members for 1995:

ANDERSON, Andy  
 6591 Chapman Avenue  
 Garden Grove, CA 92645  
 (714) 892-1962

JOHNSON, Walter M.  
 2012 W. Orange Avenue  
 Anaheim, CA 92804  
 (714) 533-1287

McCAGUE, Gary A.  
 1717 E. Birch, Apt M-204  
 Brea, CA 92621  
 (714) 990-3970

McDOWELL, Faye  
 362 Winslow Avenue  
 Long Beach, CA 90814  
 (310) 597-7684

**Do you know the way to San Jose?**

C.F.M.S. Convention & Show

June 23-24-25, 1995

Santa Clara Valley Fairgrounds  
 Hosts  
 Santa Clara Valley Gem & Mineral Soc

This brings our membership up to a total of 132 members. Don't forget to add these names to the back of your rosters. Thank you!

Milly

POTLUCK/AWARDS NIGHT:

Mark your calendars for the Annual Potluck/Awards Dinner, Tuesday; June 13th at 6:30 PM, our meeting room (basement level) Anaheim Memorial Hospital Medical Center. Please plan on bringing a dish to share, i.e., main dish, vegetables, salad or dessert. The club will furnish eating utensils, cups, punch and coffee.

After dinner Trophies and Awards will be presented. We'll need volunteers to help with table decorations, eating utensils and to prepare beverages...PLEASE VOLUNTEER THIS EVENING. Volunteers should be there at 5:30 PM.

L. C. Madsen, MD

IN MEMORIAM

George Edward Arvanites

August 11, 1920  
New York, New York

April 24, 1995  
Santa Ana, California

The Searchers have lost a special member and friend. George and Milly joined the Searchers in 1976. During the past nineteen years George has been a very active member in all of the club's activities and always working for the betterment of the club.

He was our President in 1986, Show Co-Chairman for our 25th Anniversary Show in 1984 and Show Chairman in 1981. George also served as Dealer Chairman and volunteered many many times to lead field trips. It was George's ingenuity that enabled the Searchers to move the Annual Gem Roundup to the Brookhurst Community Center in 1981.

Many of you will recall he was our field trip leader on a Memorial Day trip to Goffs in 1982. George had things pretty much under control when the Whittier Club drove in and wanted to join us for the weekend. Our space was somewhat limited and he was concerned about getting everyone parked comfortably but George worked it out and we had a great campout. We had nearly 40 rigs and almost 100 people. A record campout for the Searchers.

George was a dedicated member and always ready to do more than his share. We shall all miss George but we'll always remember him.

We extend our deepest sympathy to his wife Milly.

Marge



ORANGE COUNTY FAIR - SEARCHER DAY:

Saturday, July 22, 1995 will be "Searcher Day" in the Gem and Mineral building at the Orange County Fair. We will need a lot of members to work 2 to 4 hours. This is not hard work and it is a lot of fun. You can help answer questions and if you like to talk this is your chance to talk with lots of people or, you can show your skills and demonstrate. Just spend a couple of hours working in the Gem and Mineral building and then you are free to enjoy the fair the rest of the day or evening.

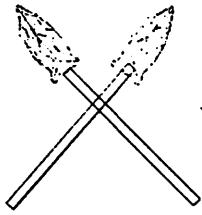
The Fair opens at 10:00 AM. You will get free parking and a free entry pass. You may sign up at our general meetings, see Todd Schowalter or Larry Richey. So-o-o SIGN UP and come out to the Fair, it's fun and the work is easy. Remember, July 22nd is "Searcher Day" in the Gem and Mineral building.

Larry Richey

Show me a man who understands women, and I'll show you a man who is in for a big surprise.

via Magic Valley Gem News, 12/94  
and The Burro Express 11/94

MEMORIAM

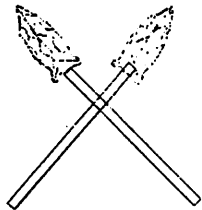


A dear friend, confidante, and mentor to many a rockhound, William Louis Keyes passed away on May 2, 1995 of natural causes. As many of you know, Bill had problems with asthma and his heart, which certainly contributed to his passing. Bill was born in Kansas City, Kansas on May 17, 1920 and roamed throughout Kansas and Missouri during his youth. Bill leaves his loving wife, Bobby, daughters, Jeannie, Chris, Nora and Charlotte as well as several grandchildren and his sister Erna Yates.



Bill had a great fondness for collecting even in his youth where he collected many Indian artifacts like arrowheads and spear points. He later began collecting rocks and minerals and over time graduated to the lapidary arts. Bill excelled in the lapidary arts and as many of you can attest he crafted a few spheres, bolo ties, necklaces and belt buckles in his time. Bill used his great knowledge for several of the Searchers meeting programs where he always managed to amaze the membership.

Bill was assured a place in every rockhounds heart and soul since he greeted many a prospective and current Searcher with his great personality, golden smile, cheery eyes and of course a few jokes. When you think of a true rockhound and friend - I hope that "Diamond Bill" comes to your mind and that you consider yourself fortunate to have known him and can reflect on his contributions to the lapidary world that he loved so much. I know that he is smiling down on all his rockhound friends and family and I know that there are a great many rockhounds smiling back at a lost friend.



Sincerely,

Walter Mroch



SHOW REPORT:

We would like to thank everyone of the Searchers who headed committees, worked on committees, worked at the show, donated prizes for Donation Awards, Hourly Door Prizes and Wheel of Fortune and performing the hundreds of tasks it took to make our Annual Gem Roundup a successful Show.

A big thanks to all the ladies who made things for our craft booth and to Nancy Reed and her helpers for a fantastic job in the kitchen and to Marje Husby for a super Friday night dinner and to all the members who brought in pies and cakes.

Our show would be impossible without help from all of you. It was great to see so many of our new members taking part and helping out. Floyd and I are appreciative for all your hard work.

George Mitchum, 1995 Show Chairman  
Floyd Neeley, 1995 Co-Chairman



SHOW NOTES FROM HOSPITALITY -36TH ANNUAL SHOW:

One couple from Mesa, Arizona drove up especially to attend our show. Another guest, Mr Tom Miller came in from Centerpoint, Oregon. He is a member of the Roxy Ann Gem and Mineral Club. Good to see Mr and Mrs Hamilton, ex Searchers from Ventura.

Marie Mason, past President of the defunct Norwalk Gem and Mineral Club presented the Searchers a framed picture of the State Rock, Minerals and Gems.

One visitor was surprised to see a chess set in Hal's case identical to one he won during World War II.

And, of course, we were delighted to see all the Searcher members who have moved from the vicinity - many of whom maintain their membership.

Jeanne and Merle Howe

PROGRAM REPORT:

In April, Betty and Harry Nelson put on a terrific slide show program about Searcher's outings. The photography was excellent, and the whole thing was synchronized to musical selections appropriate to the subjects depicted. Their pictures covered the whole range of campout scenes from desert camps, field trips, mines, rainstorms and rainbows, beautiful desert sunsets and wildflowers, and even Oatman, Arizona, the pet burro capital of the world. It truly was an enjoyable program.

The May program will be presented by Marvin Mog - the "happy wanderer" who will fill us in on his latest travels through the United States, and maybe a little about his recent trip to South America. Whatever the locale of Marvin and Jacque's travels, he always puts on an entertaining and enjoyable program.

June will be our Annual Awards/Potluck, please bring a dish to share. We will be starting at 6:30 PM this evening.

As reported last month, the Searcher's Christmas dinner party is scheduled for Saturday the 16th of December at the Fullerton Elks Club. We have reserved a private dining room with separate entrance, a bar, and a patio with a commanding view over downtown Fullerton. In addition, the Elks Club is know for their excellent food preparation and service. There's more, the prices are significantly lower than last year, and we have contracted for exclusive use of the 1600 square foot banquet room through midnight. It has, in addition to plenty of room, an oak parquet floor throughout, which would support dancing if we want to.

I want to make this years Christmas party a really fun and memorable one. I need a committee to help plan and organize this event, and will be asking for volunteers at the July membership meeting.

Herb Beckman

SLABS FOR VETS:

Larry Richey will be needing slabs for use at the Veteran's lapidary shop and would appreciate it if you would donate any of those surplus slabs that you may have on hand. He will have a box available at our general meetings.

Marge

FOR SALE:



1978 EXPLORER 307 MOTORHOME, CLASS "A" 26 FOOT - GOOD CONDITION  
ONE PIECE FIBERGLASS BODY  
440 DODGE ENGINE, 43,000 MILES (ORIGINAL MILES)  
4K ONAN GENERATOR  
ROOF AND DASH AIR, DOMETIC REFRIGERATOR/FREEZER, MICROWAVE, BLENDER,  
COLEMAN FURNACE, SKYLINE TV ANTENA AND A&E AWNING AND SHADE AND  
BLACKOUT CURTAINS  
52 GALLON GASOLINE - 55 GALLON FRESH WATER - 72 GALLON HOLDING TANK

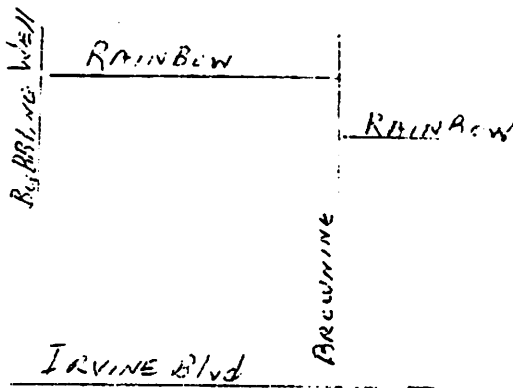
ASKING \$12,500

ANYONE INTERESTED PLEASE CALL JAY AND MARIE COLE (714) 639-7983

Marie Cole

FOR SALE:

Rough Rock and Slabs from 1945 - 1960 collection. Over 20 lug boxes. Would like to sell all or part. Anyone interested please call Mrs Opal Mahr (714) 544-6553. Address = 12851 Bubbling Well, Santa Ana, CA 92705



Margaret Neeley

SHOP HINT:

OPTICON 224 resin is amber clear and when heated to low viscosity, has the property of high penetration of fractures much like glycerine or oil. Unlike the latter, however, instead of affecting only temporary disguise it is a permanent remedy. The virtue of the process may be well demonstrated by treating one of a pair of fractured slabs. Can be used for treating petrified wood. Refractive index = 1.545.

via Magic Valley Gem News, 12/94  
and others

**DESERT NEWS-- by Sue Hickman**

I have run across articles from several sources regarding the California Desert Protection Act and other land management practices I think are of interest.

**DESERT DISPATCH - Feb. 13, 1995 RESOLUTION ASKS REPEAL OF DESERT BILL.**

Sacramento - A resolution asking Congress to repeal the CDPA has been introduced in the State Assembly by Kieth Olberg, R-Victorville.

Assembly Joint Resolution 6 lists loss of jobs, local opposition and prevention of multiple use of desert resources as reasons to repeal the Federal legislation that was passed into law last year. "The CDPA is yet another example of a huge government land-grab, one of the largest within the lower 48 contiguous states," Olberg said. "I have always been a supporter of wise use of our public land. That means the lands should be available to the average citizen, landowners, business interests, recreation enthusiasts of all kinds and other interested organizations." AJR-6 will be heard by the Assembly Natural Resources Committee in approximately one month.

DESERT EXPLORERS of the Mojave River Valley Museum April/May 1995

PARK CLOSURE LEGISLATION: Some Republican Congressmen have decided that the nation has too many National Parks. They have introduced HR 260, which would establish advance criteria for the designation of any new National Park and would create a commission to decide which 160 National Parks would be retained; the rest would be closed and disposed of. The commission would be modeled after the commissions that designate military bases for closure. The final list would go to Congress for vote up or down, with no amendments. The intent would be to prevent congressional lobbying on behalf of individual parks. The parks to be closed might well include the Santa Monica Mts. National Recreation area and the California Desert National Parks.

CONGRESSIONAL MANEUVERS from Pasadena Lap. Soc. Bulletin, 2/95 by Vern Cliffe

FEDERAL LANDS BUY-OUTS: The aggressive federal land acquisition programs appear to be at an end. The new House leadership have made it clear that there will be little or no money to fund the Land and Water Conservation Fund - the device to buy back land title and land control.

RS2477 ROADS: Bruce Babbitt, despite substantial opposition, is still trying to steam-roller his proposed

Right-of-Way regulations through Congress. The comment period has been extended (see RS2477 changes by John Boland in this issue). The House Subcommittee on Interior Appropriation told Bruce Babbitt that his "streamlining" wasn't enough. It is examining the possible consolidation of the BLM, USFS, USFWS AND NPS into a "new" Dept. of Natural Resources.

NATIONAL PARKS, PRESERVES AND WILDERNESS AREAS: The passage of S21 (CDPA) without funding has created a situation of trying to maintain all parks and preserves, etc., which will probably lead to a down-grading of all public services nationwide. Instead of looking for more money to maintain services at all parks, Congress is considering decreasing the number of National Parks and sites, retaining only the best of the parks under Federal Control.

MINING LAWS: Another introduction this year, with some of the undertones of last year's failed legislation, has been introduced. There seems to be some thought along the lines of: leave the mining laws unchanged, or, if changes are necessary, add in wording to encourage mineral exploration and development by individuals and both large and small companies.

**ENDANGERED SPECIES ACT FIELD HEARINGS:**

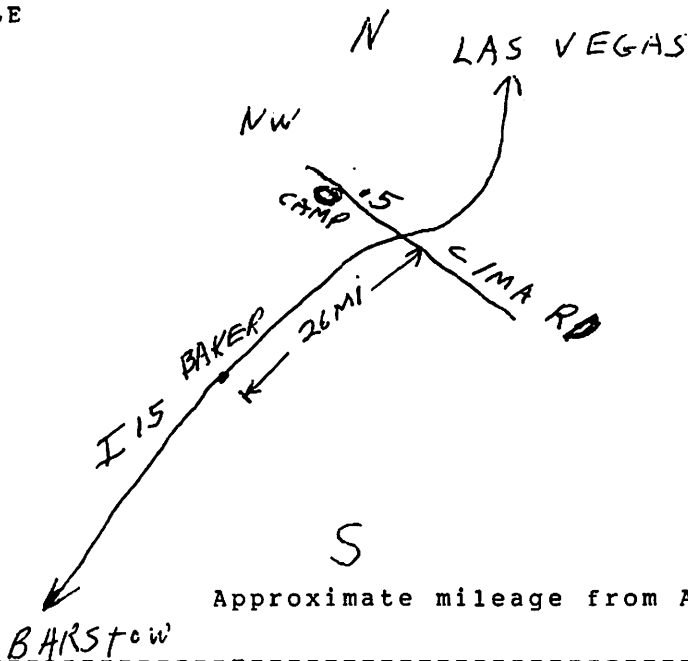
According to "People for the West", both the House and Senate plan congressional field hearings regarding Endangered Species Act reauthorization. Leading the effort in the House are Reps Don Young of AK and Richard Pombo of CA. Young is Chmn. of the Public Lands Resources Committee and Pombo is Chm. of a bipartisan House task force charged with examining the Species Act. Young and Pombo will hold hearings around the country. In the West the times will be April 17, Bakersfield, CA; April 24, Vancouver, WA; April 26, Riverside; April 28, Stockton, CA. I do not have location/time information at this time. Watch your local newspaper, call your congressman, Congressman Don Young (R-AK) (202) 225-5765 or Congressman Richard Pombo (R-CA) (202) 225-1947 for location and time.

If at all possible ATTEND THE HEARING CLOSEST TO YOU. If you have never attended a field hearing it is an opportunity to see our government in action here and not in Washington! It is an enlightening experience. If you can't attend, send written testimony to Elizabeth Megginson, Council, US House Committee on Resources, 1324 Longworth Blvd., Washington, D.C. 20515-6201.

Sue Hickman, PLAC Committee  
via CFMS Newsletter, 5/95

Memorial Day Field Trip  
Plus Extended Field Trip to Utah

NOT TO SCALE



May 26 - arrive - dry ca  
May 27 - Field trip  
and pot luck - 5 p.m.  
May 28 - Field trip or  
try your luck at  
Stateline  
May 29 - free day

Dry Camp at Cima Road and  
Topaz Mountain. Bring wood  
for campfires in these areas.

Approximate mileage from Anaheim - 200

-----  
EXTENDED FIELD TRIP

- May 30th - Arrive Kanab - Crazy Horse Campground  
Six blocks east of 89 and 89A junction.  
Approximate miles from Cima Road - 210
- May 31th - Field trip - Orderville - Septarian nodules
- June 1st - Field trip - Kanab area
- June 2nd - Move to Beaver - United Beaver Camperland  
Exit I-15 at 109 - South 300 yards  
Approximate miles from Kanab - 115
- June 3rd - Field trip - Local guide - Dutch oven dinner
- June 4th - Field trip - Local guide
- June 5th - Move to Topaz Mountain - Northwest of Delta  
Dry camp - Approximate mileage from Beaver - 100
- June 6th - Field trip - Topaz Mountain - Topaz crystals
- June 7th - Field trip - Dugway geodes

If there is enough interest, a further trip to another place, such as Green River, Utah, can be planned.

Any questions, call Marvin Mog at (714)774-6374.

Searchers Gem and Mineral Society assumes no responsibility for injuries or property damage due to accidents, carelessness, or acts of God. Searchers and their guests assume all risks during club activities.