

## SEARCHERS BOARD OFFICERS

- President: Kim Strange
- 1st VP: Sharon Burson
- 2nd VP: Andrew Bloxom
- Director: Doug Flaugh
- Secretary: Jamie Cassidy -Curtis
- Treasurer: Charlotte Spalding
- Federation Delegate: Charles Walker
- Committee Chairpersons
- Editor: Linda Horn
- Historian:
- Hospitality: Lorri Renck
- Library: Inez Flaugh
- Monthly Drawing:
- Sunshine:
- Veteran Liaison : Charles W.
- Website: Steve Duncan
- Workshop: Adrian Callard

## IN THIS ISSUE

Field Trips	3
Club Meetings	2
Upcoming CFM Shows	5

## POINTS OF INTEREST

### FIELD TRIPS

### GENERAL MEETING

### SPEAKERS

# The Rock Slab News

The Searchers Gem & Mineral Society, Anaheim CA

VOLUME 57, ISSUE 5



MAY 2020

## The President's Message

Hello Searchers

I hope this message finds you healthy and doing well. We are in the second month of a stay at home order and doing our best to observe social distancing guidelines. Hopefully, within a few weeks, we will see a gradual lifting of these restrictions and guidelines that we have come to know all too well. Until that time comes, we will continue to postpone monthly meetings, lapidary shop sessions and club sponsored field trips. When the restrictions are lifted, we will all need to give thought to what our "new normal" way of social interaction will look like.



The first week of May is an important time because it marks what would have been our club's annual show. A few weeks ago, the Show Committee and Board had to make the difficult decision to cancel the show due to the Coronavirus pandemic. Given that the vast majority of the State is still under a stay at home order, the decision to cancel the show was unavoidable and, in hindsight, it was the right decision. I want to thank the Show Committee and our Show Chair Margaret Hogarth for all the good work they did over the last year. Their efforts will bear fruit during our next show.

Earlier this month, the Board held a meeting via web conferencing software called "Zoom". We started to discuss possible changes to our Bylaws that will be presented to membership later this year. There are no specifics to share with the membership at this time. There was also some discussion about the financial impact to the club of cancelling our 2020 show. I am pleased to report that because the club had cash reserves at the end of 2019, we project we will still be on solid financial footing at the end of this year even without the revenue from the show.

These are difficult times for our country. Our best course of action continues to be to remember to wash our hands frequently, cover your nose and mouth when in public, stay informed on Coronavirus developments and protect our health and the health of our loved ones by observing social distancing requirements including avoiding group meetings. If you have symptoms, contact your doctor or medical provider.

That's all for now, stay healthy Searchers!



| **\*Please remember to bring any slab donations for the vets.**

## Searchers Club Meetings and Presenters

Board Meeting-

Member Meeting-

**NOTE: All meetings including the workshop are Canceled Until further notice.**

### Searchers Gem and Mineral Society of Anaheim YouTube Channel

Searchers, don't forget we have a club YouTube channel! If you have any rock-related videos you would like to share, please contact Bill at [whogarth@gmail.com](mailto:whogarth@gmail.com), 909-264-1122. Feel free to make some videos showing off your work and creations. We would all like to see them!

Searchers Gem and Mineral Society of Anaheim YouTube channel:

<https://youtu.be/pmtVkU0vVKw>



### The Birth of Mother's Day

The origin of Mother's Day as we know it took place in the early 1900s. A woman named Anna Jarvis started a campaign for an official holiday honoring mothers in 1905, the year her own mother died. The first larger-scale celebration of the holiday was in 1908, when Jarvis held a public memorial for her mother in her hometown of Grafton, West Virginia.



Over the next few years, Jarvis pushed to have the holiday officially recognized, and it was celebrated increasingly in more and more states around the U.S. Finally, in 1914, President Woodrow Wilson signed a proclamation making Mother's Day an official holiday, to take place the second Sunday of May.

Anna Jarvis put Mother's Day on the calendar as a day dedicated to expressing love and gratitude to mothers, acknowledging the sacrifices women make for their children. That's why she was determined to keep "Mother's" a singular possessive, as marked by the apostrophe before "s." Each family should celebrate its own mother, so that individual women across the country could feel the love, even in the midst of a broad celebration of motherhood.

From: <https://www.grammarly.com/blog/history-of-mothers-day/>

### Saw Oil Available

The club supplies saw oil at a good price. It is located at Jim Peterson's home. Bring your own 5 gallon container. The cost is \$60 for 5 gallons.

Call 714 904-8573 and make a check payable to "Searchers"

## Field Trips

**Due to the current COVID-19 virus issue, all fields trips are canceled until further notice.**

**We will be back looking for those rocks as soon as possible!!**

### Field Trips Report

During the past year, serving as the Field Trip Director has been a rewarding experience, enabling me to grow my collection and myself in ways I never could have imagined. Spending these last few weeks at home, Lyndsey and I have reorganized, cleaned up, and taken stock of our growing rock collection. We have spent plenty of time on with our slab saw, and worked on getting our Covington combo grinder operational, such that we now can say we have a home workshop. The friends we have made through the club have been gateways to acquire our own equipment and teach us many things about the rockhounding and lapidary hobbies. We're so thankful for great people like Doug Flaugh, Charles Walker, Jimmie Peterson, Kim Strange, Bill and Margaret Hogarth, Bob and Debbie Tanner, John O'Conner, Alan Sprague, Walt Lombardo, Robert Burson and all the other members for their mentorship/friendship along the way.

Some of my favorite memories of the past year include:

Beating up our Subaru on the trail into Chuckawalla Springs three times (I promised it would be the last time, twice...), necessitating duck tape to hold on our front bumper.

Car camping in Afton Canyon in 100deg summer heat in with the windows down, only to be hit in the middle of the night by a desert squall complete with mud rain and 30mph winds. The morning hike up the ridges atop Pyramid Canyon was a sunrise I will never forget.

Trading whisky for machined slab saw parts with another Searcher during the lockdown.

Bringing a couple old friends on their first offroading and rockhounding trip to Opal Mountain, and camping in absolutely punishing 30 deg weather.

Buying my first truck and learning the hard way how much fun ownership of an 18 year old truck can be.

Steak dinners at Idle Spurs Saloon in Barstow after a weekend in the Mojave.

Many dark skies filled with stars and embers from a warm campfire and hot toddy's.

Being told in not so nice terms we didn't look like fun people to camp/party with by an unsavory dirt biker on Basin Rd.

We are grateful for these experiences, and I hope you will enjoy the following gallery of images which represents some of our best personal finds at field trips with the Searcher's...

**For field trip  
information**

**contact:**

**Andrew**

**Bloxom Field**

**Trips,**

**Searchers**

**Gem and**

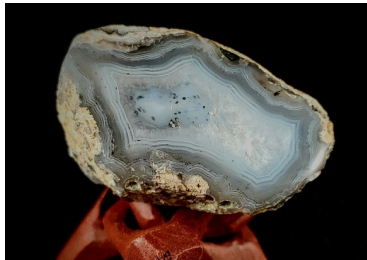
**Mineral**

**Society,**

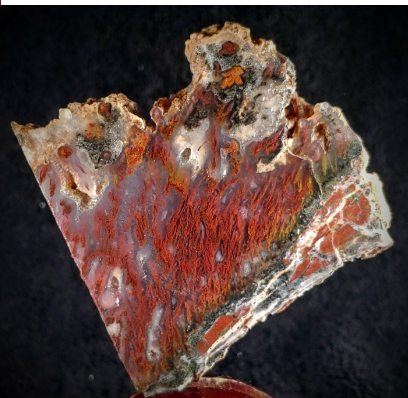
**andrew.bloxom@gmail.com**



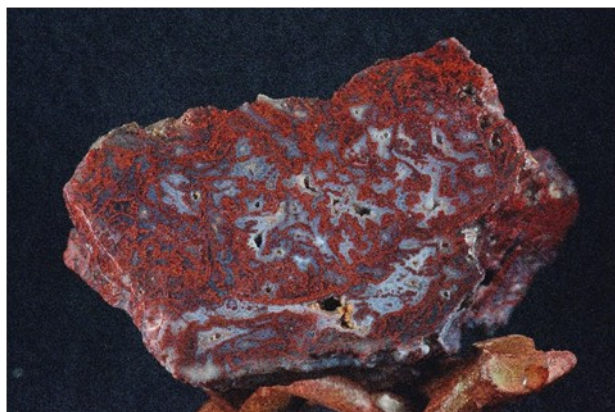
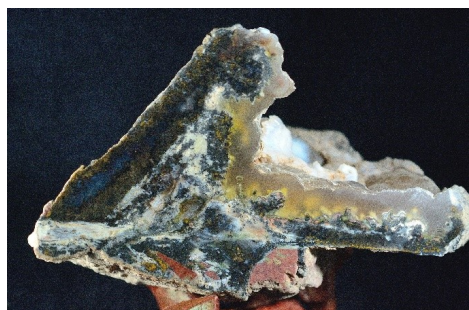
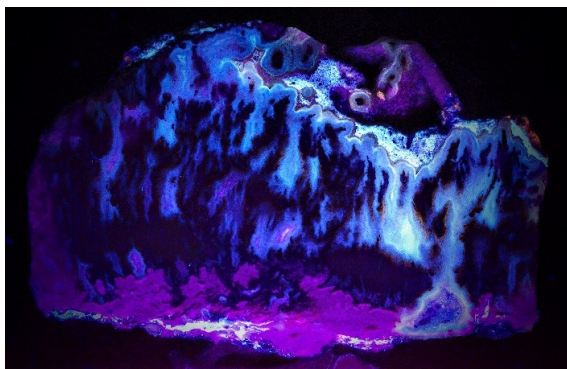
### Afton Canyon



### South Cady/Sleeping Beauty Mountain Area







More on Page 7

## Show Committee Update

### Show News

Well, we are in strange and frightening times. With the 2020 show cancelled we can transfer our preparations for next year's show. Thank you so much to the Show Committee for your hard work preparing for and then cancelling the show! You are the best team ever! Working from home along with longer daylight hours gives time for rock sorting and review. My tumbling set up includes three 15-pound barrels (steps 1-3), and two 3-pound and two 1-pound barrels (steps 4-5). I'm using rock from the storage unit set aside for tumbling which has varied quality, and rock that I collect or Searchers give to me. I change out the barrels once a week, resulting in quite a bit of tumbled rock every week. Since steps 4 and 5's capacity is less due to smaller barrels, I sort through after step 3 and pick out rocks that will never get shiny but are now pleasantly rounded. Step 5 I use the little lentil polishing beads. These were extremely fussy to work with, particularly on cold winter days, but my husband bought me a series of classifiers (like sieves), and I put the largest-holed classifier on top of a smaller-holed classifier and just wash the lentils into the lower classifier. This saves so much labor! When everything is dry, and in the comfort of the livingroom, I sort out the small rocks and gather the lentils for next week. I end up with two sets of lentils that I trade off each week. Bill made me a wood piano bench to process tumblers that makes everything so much more ergonomically comfortable. I also tumble glass in barrels 1-3 and was having a strange problem of rubber deposition only on the Tejava tea bottles. Once I put in some powdered detergent in each barrel, the rubber deposition is almost nil. I learned about detergent from Jeff, a member of another club, at the trilobite trip. He is a very experienced tumbler. I looked around on the internet and I think the rubber deposition problem was due to a pH difference between glass and the rubber that lines the barrels. It might also have to do with the particular composition of those Tejavas bottles. What do I do with all of the tumbled rock? Small pieces go toward grab bag materials, I wrap a wire harness around some for wind chimes and now bells, and the nice pieces are saved for jewelry, prizes, or? Some pieces of fossilized swamp are so beautiful, fit in the hand so well and are so soothing I was wondering if the club could offer some as meditation rocks. If you have ideas, please share.



I found five pieces of cotton fabric in my stash and made some criss-cross backed aprons using a new pattern. These will be for the Searchers to sell. This design works well with quilting fabric. If you'd like a copy of the pattern and directions, please let me know.

We have so many walkers in the neighborhood, and the poppies and other flowers in my front yard are so pretty I hung my first wind chimes from the trees in the parkway. Anything to help us all feel better!

We are preparing to buy a small trailer which means we have to dismantle the shed. Don't tell Bill, but it is full of boxed rocks. I'll pull out all of the tumbling material as I go through them.

I hope you can use this time, especially those weekends we can't go on field trips to find ways to contribute to our club. Make prizes, sort stash, set aside things you can contribute to the monthly raffle at our meetings or for the silent auction at the show or any silent auctions we might have at future monthly meetings.

Thank you for all that you do for the club! We have a dedicated core but would welcome new blood and new ideas, and there is a role for everyone of all abilities. Please stay safe and we hope to see each other in a healthy future!

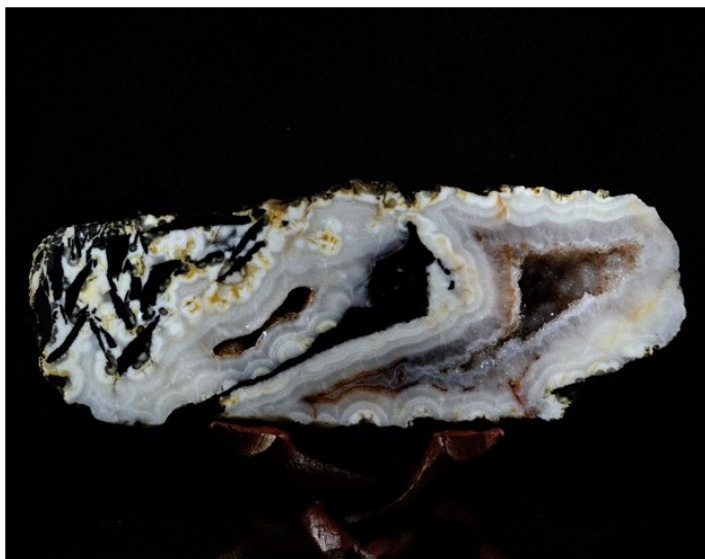
Margaret Hogarth



### Chuckawalla Springs



### Santa Monica Mtns



For a more complete listing of shows go to web-site: [www.cfmsinc.org](http://www.cfmsinc.org)

## Upcoming 2020 CFMS Gem Shows

**Due to the ongoing virus stay at home orders, all shows at this point have been canceled.**

### MAY 2020

#### May 1-3; YUCAIPA, CA

Yucaipa Valley Gem and Mineral Society  
Yucaipa Blvd and Adams Street, Yucaipa, CA  
Hours: Fri 6 pm – 9 pm; Sat 12 noon – 9 pm; Sun 12 noon – 6 pm  
Contact: [grandpasgems@gmail.com](mailto:grandpasgems@gmail.com)  
Web Site: <http://www.yvgms.org>

#### May 2 – 3; JACKSON, CA

Amador County Gem & Mineral Society  
Kennedy Mine off Hwy 29/88. 12594 Kennedy Mine Rd., Jackson, CA 95642  
Hours: 10 am – 4 pm daily  
Contact: [mountaingirl@volcano.net](mailto:mountaingirl@volcano.net)  
Web site: <http://www.amadorgemandmineral.org>

### JUNE 2020

#### June 1-2: CAMBRIA, CA

San Luis Obispo Gem & Mineral Club  
Cambria Veterans Hall  
1000 Main Street  
Hours: 10 – 5 daily  
Contact: Kim Noyes, (805) 610-0603  
Email: [kim@gmail.com](mailto:kim@gmail.com)

#### June 23-28; LODI, CA

CFMS 81st Show & Convention  
California Federation of Mineralogical Societies  
Grape Festival Fairgrounds 413 E Lockeford Street

#### June 27 – 28, CULVER CITY, CA

Culver City Rock and Mineral Club  
Veterans Memorial Auditorium  
4117 Overland Ave, Culver City CA 90230  
Website: <http://culvercityrocks.org/fiesta.htm>  
Facebook: @CCRCM Instagram:

[culvercityrocks](https://twitter.com/culvercityrocks) CCR&MC Twitter: @CCRCMS

**August 15 – 16; TEHACHAPI, CA**  
Tehachapi Valley Gem and Mineral Society  
500 East “F” Street, Tehachapi  
Hours: 9 am – 5 pm  
Contact: (661) 972-1117  
Web site: <http://www.tvgms>

**September 12-13; ARROYO GRANDE, CA**  
San Luis Obispo Gem and Mineral Club  
South County Regional Center  
800 W. Branch St., Arroyo Grande  
Hours: 10 am – 5 pm  
Admission: \$5, children 12 and under free  
Email: [show@slogem.org](mailto:show@slogem.org)

**September 26-27; LANCASTER, CA**  
Palmdale Gem & Mineral Club  
Antelope Valley Fairgrounds  
2551 West Ave H, Lancaster  
Hours: 10-5 Daily  
Contact: Allison McClung; 661-839-7403  
Email: [ali\\_cares@aol.com](mailto:ali_cares@aol.com)  
Website: [palmdalegemandmineral.org](http://palmdalegemandmineral.org)

**September 26 – 27; LODI, CA**  
Stockton Lapidary and Mineral Club  
Lodi Grape Festival Grounds  
413 East Lockeford Street, Lodi CA 95240  
Hours: 10 am – 5 pm daily  
Earth's Treasures; Gems, Minerals and Jewelry show  
Web site: <http://stocktonlapidary.org>

**October 10 – 11; TRONA, CA**  
Searles Lake Gem and Mineral Society  
13337 Main St., Trona  
Gem-O-Rama Hours: Sat 7:30 am – 5 pm, Sun 7:30 am – 3 pm  
Contact: Jim & Bonnie Fairchild, (760) 372-5356  
email: [slgms@iwwisp.com](mailto:slgms@iwwisp.com)  
Web site: <http://www1.iwwisp.com/tronagemclub/>

**October 11: FALLBROOK, CA**  
Fallbrook Gem and Mineral Society  
123 W Alvarado St  
Hours: 9-4  
Contact: Michelle Shearer; 760-805-2184  
Email: [info@fgms.org](mailto:info@fgms.org)  
Website: [www.fgms.org](http://www.fgms.org)

**October 17-18: SANTA ROSA, CA**  
Santa Rosa Gem & Mineral Society  
1351 Maple Ave., Santa Rosa, CA 95404  
Hours: Sat 10 am – 6 pm, Sun 10 am – 5 pm  
Contact: 1 707 849-9551, [santarosarock-show@hotmail.com](mailto:santarosarock-show@hotmail.com)  
Website: <http://SRMSG.org>  
Flyer: [agate-one.jpg](#)

**October 24 – 25: SACRAMENTO, CA**  
Sacramento Gem & Mineral Society  
Scottish Rites Center  
6151 H Street, Sacramento, CA 95819-2604  
84th Annual Sacramento Gem, Mineral and Jewelry Show  
Hours: Sat 10 am – 5 pm, Sun 10 am – 4 pm  
Contact: (916) 662-5819, [show@sacramentomineralsociety.org](mailto:show@sacramentomineralsociety.org)  
Web site: <http://sacramentomineralsociety.org>  
Show web site: <http://sacgemshow.com>

**November 14 – 15: YUBA CITY**  
Sutter Buttes Gem & Mineral Society  
Yuba-Sutter Fairgrounds  
442 Franklin Hall, Yuba City, CA 95991  
Hours: Sat. 10 am – 5 pm, Sun. 10 am – 4 pm  
Contact: (916) 677-6696, [horita@comcast.net](mailto:horita@comcast.net)  
Show web site: <http://sutterbuttesgemmin.org>

**November 21-22; ANAHEIM**  
American Opal Society  
Business Expo Center, 1960 S. Anaheim Way, Anaheim 92805  
Adults – \$5, Students and children under age 15 are free; Free parking  
Hours: Sat 10 am – 5 pm, Sun 10 am – 4 pm  
Contact: (714) 501-9959, [aos.editor02@gmail.com](mailto:aos.editor02@gmail.com)  
Website: <http://opalsociety.org>  
Show Flyer: [2020Flyer.jpg](#)

## May Birthstone: Emerald





# Searchers Gem & Mineral Society

## General Information



Check our website for unexpected changes in schedule!

[www.searchersrocks.org](http://www.searchersrocks.org)

**General Meetings:** 7 PM, 2nd Tuesday of each month, Jan - Nov

**Board Meetings:** 6PM, 1st Tuesday of each month, Jan - Nov

**Workshop:** Thursday 5:30 to 10:00 PM and Saturday 2:30 to 7:00 PM

**Location:** Anaheim Downtown Community Center  
250 East Center St.  
Anaheim, CA 92805

**Mailing Address:** Searchers Gem & Mineral Society, Inc.

P.O Box 3492

Anaheim, CA 92803

**Website:** [www.searchersrocks.org](http://www.searchersrocks.org)

<b>Membership Dues:</b>	Individual	\$25
	Couple	\$35
	Junior (17 & under)	\$10

Valid Jan.1-Dec.31, not prorated

**Bulletin:** Submissions due 3rd Friday of the month via e-mail to: [editor@searchersrocks.org](mailto:editor@searchersrocks.org).

Bulletin distributed 1st week of each month. Mail exchange bulletins to the editor:

Searchers —Linda Horn Editor

P.O. Box 3492

Anaheim, Ca. 92803

**Charter Date:** April 20, 1958

**Affiliations:** California Federation of Mineralogical Societies

American Federation of Mineralogical Societies



# THE NEVADA MINERAL & BOOK COMPANY

<http://minbooks.net/>

342 S. Tustin Street • Orange, CA 92866

Ph. 714-633-1549

